

Anti-Peripherin PRPH Antibody

Catalog Number: M06787-1

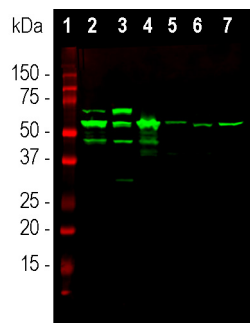
Overview

Product Name	Anti-Peripherin PRPH Antibody
Reactive Species	Bovine, Human, Mouse, Pig, Rat
Description	Boster Bio Anti-Peripherin PRPH Antibody catalog # M06787-1. Tested in IF, IHC, ICC, WB applications. This antibody reacts with Bovine, Human, Mouse, Pig, Rat.
Application	IF, IHC, ICC, WB
Clonality	Polyclonal
Formulation	Supplied as an aliquot of serum plus 5mM NaN ₃
Storage Instructions	Store at -20°C for one year. For short term storage and frequent use, store at 4°C for up to one month. Avoid repeated freeze-thaw cycles.
Host	Rabbit
Uniprot ID	P41219

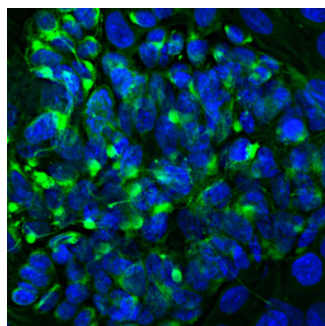
Technical Details

Immunogen	Recombinant human peripherin expressed in and purified from E. coli
Concentration	0.5-1mg/ml, actual concentration vary by lot. Use suggested dilution ratio to decide dilution procedure.
Suggested Dilutions	<p>Dilute the sample so that the expected range of concentrations fall within the detection range of this kit.</p> <p>If the expected range of concentration is unknown, a pilot test should be conducted to decide the optimal dilution ratio for your samples.</p> <p>Some PubMed article(s) citing the expression level of this target are as follows:</p> <p>Boster Bio's internal QC testing used:</p> <p>WB: 1:1,000-1:2,000. IF/ICC and IHC: 1:2,000.</p>

Anti-Peripherin PRPH Antibody (M06787-1) Images



Western blot analysis of tissue and cell lysates using rabbit pAb to peripherin, M06787-1, dilution 1:10,000 in green: [1] protein standard, [2] rat spinal cord, [3] mouse spinal cord, [4] pig spinal cord, [5] cow spinal cord, [6] SH-SY5Y cells and [7] PC12 cells. The major band at ~57kDa corresponds to the major peripherin protein isoform, while other bands presumably represent protein products of alternate transcripts of the peripherin gene.



Immunofluorescent analysis of the widely used rat pheochromocytoma PC 12 cell line stained with rabbit polyclonal antibody to peripherin, M06787-1, dilution 1:2,000, in green. The blue is Hoechst staining of nuclear DNA. Peripherin, one of the Class III family of intermediate filament subunit proteins, is a major component of the PC12 cell forming a perinuclear cap, with some filaments visible in the cytoplasm.

Submit a product review to Biocompare.com

Submit a review of this product to Biocompare.com to receive a \$20 Amazon.com giftcard! Your reviews help your fellow scientists make the right decisions. Thank you for your contribution.



Anti-Peripherin PRPH Antibody