

Anti-Acetyl-Histone H3 (Lys18) H3F3A Rabbit Monoclonal Antibody, Clone#RM166

Catalog Number: M06819-12

Overview

Product Name	Anti-Acetyl-Histone H3 (Lys18) H3F3A Rabbit Monoclonal Antibody, Clone#RM166
Reactive Species	Human, Vertebrates
Description	Boster Bio Anti-Acetyl-Histone H3 (Lys18) H3F3A Rabbit Monoclonal Antibody, Clone#RM166 (Catalog # M06819-12). Tested in WB, ICC, ChIP, IHC, ELISA, Luminex applications. This antibody reacts with Human, Vertebrates.
Application	ChIP, ELISA, IHC, ICC, WB, Luminex
Clonality	Monoclonal RM166
Formulation	50% Glycerol/PBS with 1% BSA and 0.09% sodium azide
Storage Instructions	Store at -20°C for one year. Avoid repeated freeze-thaw cycles.
Host	Rabbit
Uniprot ID	P84243

Technical Details

Immunogen	An acetyl-peptide corresponding to the Acetyl-Histone H3 (Lys18)
Cross Reactivity	This antibody reacts to Histone H3 acetylated at Lysine 18 (K18ac). No cross-reactivity with other acetylated Lysines in histone H3.
Isotype	Rabbit IgG
Form	Liquid
Concentration	1 mg/mL
Purification	Protein A affinity purified from an animal origin-free culture supernatant
Suggested Dilutions	<p>Dilute the sample so that the expected range of concentrations fall within the detection range of this kit.</p> <p>If the expected range of concentration is unknown, a pilot test should be conducted to decide the optimal dilution ratio for your samples.</p> <p>Some PubMed article(s) citing the expression level of this target are as follows:</p> <p>Boster Bio's internal QC testing used:</p> <p>WB: 0.5 ug/mL - 2 ug/mL</p> <p>ICC: 0.5 ug/mL - 2 ug/mL</p> <p>ChIP: 2 ug/mL-10 ug/mL</p> <p>IHC: 1 ug/mL-10 ug/mL</p>

	ELISA: 0.2 ug/mL - 1 ug/mL Luminex: 0.1 ug/mL - 0.5 ug/mL.
--	---

Anti-Acetyl-Histone H3 (Lys18) H3F3A Rabbit Monoclonal Antibody, Clone#RM166 (M06819-12) Images

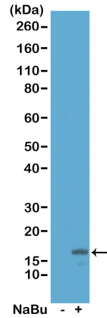


Figure 1. Western Blotting result
Western Blot of acid extracts from HeLa cells untreated (-) or treated (+) with sodium butyrate, using RM166 at 0.5 ug/mL, showed a band of histone H3 acetylated at Lysine 18 in treated HeLa.

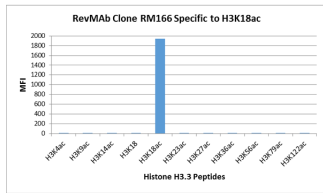


Figure 2. Specificity Test result
RM166 specifically reacts to Histone H3 acetylated at Lysine 18 (K18ac). No cross reactivity with acetylated Lysine 4 (K4ac), Lysine 9 (K9ac), Lysine 14 (K14ac), Lysine 23 (K23ac), Lysine 27 (K27ac), Lysine 36 (K36ac), Lysine 56 (K56ac), lysine 79 (K79ac), or Lysine 122 (K122) in histone H3.

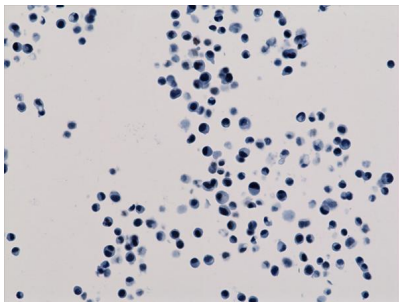


Figure 3. IHC result
Immunohistochemistry staining of HepG2 cells using anti-Acetyl-Histone H3 (Lys18) antibody, RM166.

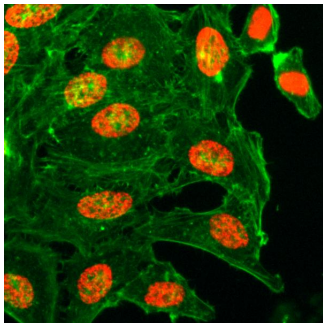


Figure 4. ICC result
Immunocytochemistry of HeLa cells treated with sodium butyrate, using Acetyl-Histone H3 (Lys18) Rabbit mAb RM166 (red). Actin filaments have been labeled with fluorescein phalloidin (green).

Figure 5. ELISA result showing specificity
Sandwich ELISA against acetylated histone H3 at Lys 18 using HeLa whole cell lysate, treated or untreated with Sodium Butyrate. Using anti-H3CT (RM188, 1 ug/mL) as the capture antibody and biotinylated anti-H3K18ac (RM166, 2 ug/mL) as the detection antibody.

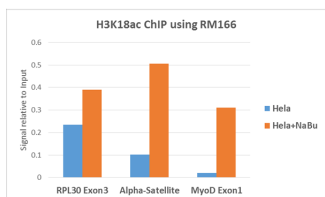
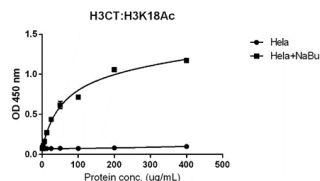


Figure 6. ChIP result

ChIP performed on HeLa cells with or without Sodium Butyrate treatment, using H3K18ac antibody (RM166, 5ug). Real-time PCR was performed using primers specific to the gene indicated.

Submit a product review to Biocompare.com

Submit a review of this product to Biocompare.com to receive a \$20 Amazon.com giftcard! Your reviews help your fellow scientists make the right decisions. Thank you for your contribution.



Anti-Acetyl-Histone H3 (Lys18) H3F3A Rabbit Monoclonal Antibody, Clone#RM166