

Anti-Monomethyl-Histone H3 (Lys9) H3F3A Rabbit Monoclonal Antibody, Clone#RM150

Catalog Number: M06819-17

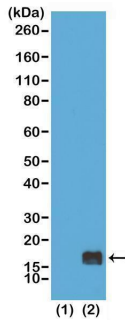
Overview

Product Name	Anti-Monomethyl-Histone H3 (Lys9) H3F3A Rabbit Monoclonal Antibody, Clone#RM150
Reactive Species	Human, Vertebrates
Description	Boster Bio Anti-Monomethyl-Histone H3 (Lys9) H3F3A Rabbit Monoclonal Antibody, Clone#RM150 (Catalog # M06819-17). Tested in WB, ChIP, ICC, ELISA, Luminex applications. This antibody reacts with Human, Vertebrates.
Application	ChIP, ELISA, ICC, WB, Luminex
Clonality	Monoclonal RM150
Formulation	50% Glycerol/PBS with 1% stabilizing protein and 0.09% sodium azide This antibody is supplied in a stabilized formulation. Compatibility with conjugation reactions depends on the chemistry of the conjugation method used. For conjugation methods that are not compatible with the stabilizing components present in this formulation, a carrier-free antibody format is required.
Storage Instructions	Store at -20°C for one year. Avoid repeated freeze-thaw cycles.
Host	Rabbit
Uniprot ID	P84243

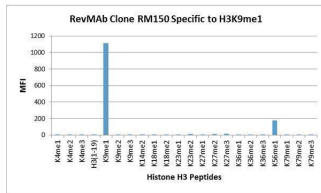
Technical Details

Immunogen	A monomethyl-peptide corresponding to Monomethyl-Histone H3 (Lys9)
Cross Reactivity	This antibody reacts to Histone H3 monomethylated at Lysine 9 (K9me1). No cross-reactivity with dimethylated Lysine 9 (K9me2) or trimethylated Lysine 9 (K9me3), or other methylations in histone H3.
Isotype	Rabbit IgG
Form	Liquid
Concentration	1 mg/mL
Purification	Protein A affinity purified from an animal origin-free culture supernatant
Suggested Dilutions	WB: 0.2 ug/mL-1 ug/mL ChIP: 2 ug/mL-10 ug/mL ICC: 0.5 ug/mL - 2 ug/mL ELISA: 0.2 ug/mL - 1 ug/mL Luminex: 0.1 ug/mL - 0.5 ug/mL.

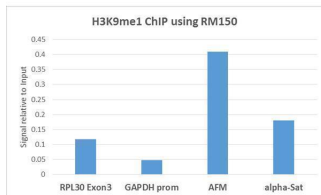
Anti-Monomethyl-Histone H3 (Lys9) H3F3A Rabbit Monoclonal Antibody, Clone#RM150 (M06819-17) Images



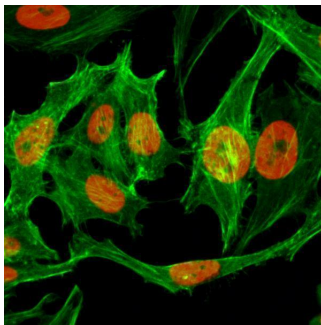
Western Blotting result Western Blot of recombinant histone H3.3 (1) and acid extracts of HeLa cells (2), using RM150 at 0.5 ug/mL, showed a band of histone H3 monomethylated at Lysine 9 (K4me1) in HeLa cells.



Specificity Test result RM150 specifically reacts to Histone H3 monomethylated at Lysine 9 (K9me1). No cross reactivity with non-modified Lysine 9, dimethylated Lysine 9 (K9me2), trimethylated Lysine 4 (K9me3), or other methylations in histone H3.



ICC result Immunocytochemistry of HeLa cells treated with sodium butyrate, using Monomethyl-Histone H3(Lys9) Rabbit mAb RM150 (red). Actin filaments have been labeled with fluorescein phalloidin (green).



ICC result Immunocytochemistry of HeLa cells treated with sodium butyrate, using Monomethyl-Histone H3(Lys9) Rabbit mAb RM150 (red). Actin filaments have been labeled with fluorescein phalloidin (green).

Submit a product review to [Biocompare.com](https://www.biocompare.com)

Submit a review of this product to [Biocompare.com](https://www.biocompare.com) to receive a \$20 Amazon.com giftcard! Your reviews help your fellow scientists make the right decisions. Thank you for your contribution.



Anti-Monomethyl-Histone H3 (Lys9) H3F3A Rabbit Monoclonal Antibody, Clone#RM150

For Research Use Only. Not for use in diagnostic procedures.