

Anti-Dimethyl Histone H3 (Lys18) H3F3A Rabbit Monoclonal Antibody, Clone#RM168

Catalog Number: M06819-20

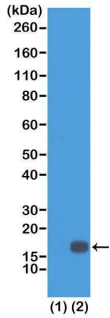
Overview

Product Name	Anti-Dimethyl Histone H3 (Lys18) H3F3A Rabbit Monoclonal Antibody, Clone#RM168
Reactive Species	Human, Vertebrates
Description	Boster Bio Anti-Dimethyl Histone H3 (Lys18) H3F3A Rabbit Monoclonal Antibody, Clone#RM168 (Catalog # M06819-20). Tested in WB, ELISA, Luminex applications. This antibody reacts with Human, Vertebrates.
Application	ELISA, WB, Luminex
Clonality	Monoclonal RM168
Formulation	50% Glycerol/PBS with 1% stabilizing protein and 0.09% sodium azide This antibody is supplied in a stabilized formulation. Compatibility with conjugation reactions depends on the chemistry of the conjugation method used. For conjugation methods that are not compatible with the stabilizing components present in this formulation, a carrier-free antibody format is required.
Storage Instructions	Store at -20°C for one year. Avoid repeated freeze-thaw cycles.
Host	Rabbit
Uniprot ID	P84243

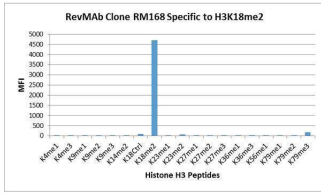
Technical Details

Immunogen	A dimethyl-peptide corresponding to Dimethyl-Histone H3 (Lys18).
Cross Reactivity	This antibody reacts to Histone H3 dimethylated at Lysine 18 (K18me2). No cross-reactivity with monomethylated Lysine 18 (K18me1) or trimethylated Lysine 18 (K18me3), or other methylation in histone H3.
Isotype	Rabbit IgG
Form	Liquid
Concentration	1 mg/mL
Purification	Protein A affinity purified from an animal origin-free culture supernatant
Suggested Dilutions	WB: 0.2 ug/mL – 1 ug/mL ELISA: 0.1 ug/mL - 0.5 ug/mL Luminex: 0.1 ug/mL – 0.5 ug/mL.

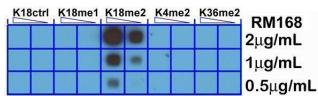
Anti-Dimethyl Histone H3 (Lys18) H3F3A Rabbit Monoclonal Antibody, Clone#RM168 (M06819-20) Images



Western Blotting result Western Blot of recombinant histone H3.3 (1) and acid extracts of HeLa cells (2), using RM168 at 0.5 ug/mL, showed a band of histone H3 dimethylated at Lysine 18 (K18me2) in HeLa cells.



Specificity Test result RM168 specifically reacts to Histone H3 dimethylated at Lysine 18 (K18me2). No cross reactivity with other methylated lysines in Histone H3.



Dot Blot result A Peptide dotblot shows RM168 only reacts to Histone H3 dimethyl-Lysine 18 (K18me2). No cross reactivity with nonmodified Lysine 18 (K18Ctrl), monomethylated Lysine 18 (K18me1), dimethylated Lysine 4 (K4me2), or dimethylated Lysine 36 (K36me2).

Submit a product review to [Biocompare.com](https://www.biocompare.com)

Submit a review of this product to [Biocompare.com](https://www.biocompare.com) to receive a \$20 Amazon.com giftcard! Your reviews help your fellow scientists make the right decisions. Thank you for your contribution.



Anti-Dimethyl Histone H3 (Lys18) H3F3A Rabbit Monoclonal Antibody, Clone#RM168

For Research Use Only. Not for use in diagnostic procedures.