

Anti-Histone H3 pan H3F3A Rabbit Monoclonal Antibody, Clone#RM188

Catalog Number: M06819-28

Overview

Product Name	Anti-Histone H3 pan H3F3A Rabbit Monoclonal Antibody, Clone#RM188
Reactive Species	Vertebrates
Description	Boster Bio Anti-Histone H3 pan H3F3A Rabbit Monoclonal Antibody, Clone#RM188 (Catalog # M06819-28). Tested in WB, ICC, ELISA, Luminex applications. This antibody reacts with Vertebrates.
Application	ELISA, ICC, WB, Luminex
Clonality	Monoclonal RM188
Formulation	50% Glycerol/PBS with 1% BSA and 0.09% sodium azide
Storage Instructions	Store at -20°C for one year. Avoid repeated freeze-thaw cycles.
Host	Rabbit
Uniprot ID	P84243

Technical Details

Immunogen	A peptide corresponding to the C-terminus of human Histone H3
Cross Reactivity	This antibody reacts to all Histone H3 proteins, independent of post-translational modifications. No cross-reactivity with other histone proteins.
Isotype	Rabbit IgG
Form	Liquid
Concentration	1 mg/mL
Purification	Protein A affinity purified from an animal origin-free culture supernatant
Suggested Dilutions	<p>Dilute the sample so that the expected range of concentrations fall within the detection range of this kit.</p> <p>If the expected range of concentration is unknown, a pilot test should be conducted to decide the optimal dilution ratio for your samples.</p> <p>Some PubMed article(s) citing the expression level of this target are as follows:</p> <p>Boster Bio's internal QC testing used:</p> <p>WB: 0.01 ug/mL - 0.25 ug/mL</p> <p>ICC: 1 ug/mL - 5 ug/mL</p> <p>ELISA: 0.2 ug/mL - 1 ug/mL</p> <p>Luminex: 0.1 ug/mL - 0.5 ug/mL.</p>

Anti-Histone H3 pan H3F3A Rabbit Monoclonal Antibody, Clone#RM188 (M06819-28) Images

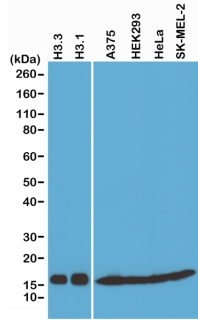


Figure 1. Western Blotting result
Western Blot of recombinant Histone H3.3 and Histone H3.1 proteins, A375, HEK293, HeLa and SK-MEL-2 whole cell lysates, using RM188 at 0.025 ug/mL, showed a band of recombinant H3.1 and H3.3 proteins, and total histone H3 in A375, HEK293, HeLa and SK-MEL-2 cells.

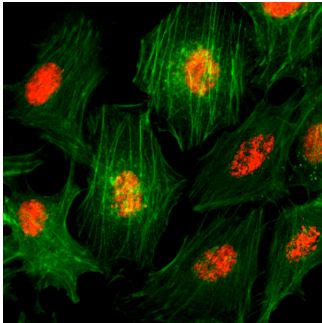


Figure 2. ICC result
Immunocytochemistry of HeLa cells, using Histone H3 Rabbit mAb RM188 (red). Actin filaments have been labeled with fluorescein phalloidin (green).

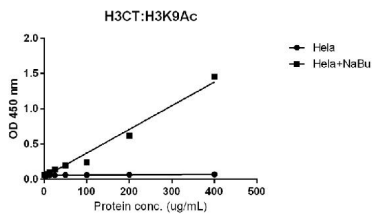


Figure 3. ELISA result showing specificity
Sandwich ELISA against acetylated histone H3 at Lys 9 using HeLa whole cell lysate, treated or untreated with Sodium Butyrate. Using anti-H3CT (RM188, 1 ug/mL) as the capture antibody and biotinylated anti-H3K9ac (RM161, 1 ug/mL) as the detection antibody.

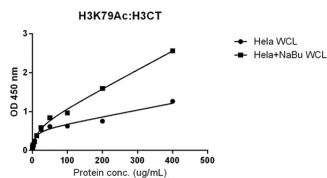
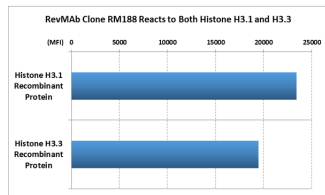


Figure 4. ELISA result showing specificity
Sandwich ELISA against acetylated histone H3 at Lys 79 using HeLa whole cell lysate, treated or untreated with Sodium Butyrate. Using anti-H3K79ac (RM156, 5 ug/mL) as the capture antibody and biotinylated anti-H3CT (RM188, 1 ug/mL) as the detection antibody.

Figure 5. Specificity Test result
RM188 reacts to both Histone H3.1 and Histone H3.3.



Submit a product review to Biocompare.com

Submit a review of this product to Biocompare.com to receive a \$20 Amazon.com giftcard! Your reviews help your fellow scientists make the right decisions. Thank you for your contribution.



Anti-Histone H3 pan H3F3A Rabbit Monoclonal Antibody, Clone#RM188