

Anti-Dimethyl-Histone H3 (Lys4) H3F3A Rabbit Monoclonal Antibody, Clone#RM135

Catalog Number: M06819-4

Overview

Product Name	Anti-Dimethyl-Histone H3 (Lys4) H3F3A Rabbit Monoclonal Antibody, Clone#RM135
Reactive Species	Human, Vertebrates
Description	Boster Bio Anti-Dimethyl-Histone H3 (Lys4) H3F3A Rabbit Monoclonal Antibody, Clone#RM135 (Catalog # M06819-4). Tested in ChIP, WB, ICC, ELISA, Luminex applications. This antibody reacts with Human, Vertebrates.
Application	ChIP, ELISA, ICC, WB, Luminex
Clonality	Monoclonal RM135
Formulation	50% Glycerol/PBS with 1% BSA and 0.09% sodium azide
Storage Instructions	Store at -20°C for one year. Avoid repeated freeze-thaw cycles.
Host	Rabbit
Uniprot ID	P84243

Technical Details

Immunogen	A dimethyl-peptide corresponding to Dimethyl-Histone H3 (Lys4)
Cross Reactivity	This antibody reacts to Histone H3 dimethylated at Lysine 4 (K4me2). No cross-reactivity with monomethylated Lysine 4 (K4me1) or trimethylated Lysine 4 (K4me3), or other methylation in histone H3.
Isotype	Rabbit IgG
Form	Liquid
Concentration	1 mg/mL
Purification	Protein A affinity purified from an animal origin-free culture supernatant
Suggested Dilutions	<p>Dilute the sample so that the expected range of concentrations fall within the detection range of this kit.</p> <p>If the expected range of concentration is unknown, a pilot test should be conducted to decide the optimal dilution ratio for your samples.</p> <p>Some PubMed article(s) citing the expression level of this target are as follows:</p> <p>Boster Bio's internal QC testing used:</p> <p>ChIP: 1µg-5 µg</p> <p>Western Blot: 0.02 ug/mL – 0.2 ug/mL</p> <p>ICC: 1 ug/mL - 2 ug/mL</p>

	ELISA: 0.2 ug/mL - 1 ug/mL Luminex: 0.1 ug/mL - 0.5 ug/mL.
--	---

Anti-Dimethyl-Histone H3 (Lys4) H3F3A Rabbit Monoclonal Antibody, Clone#RM135 (M06819-4) Images

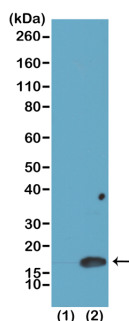


Figure 1. Western Blotting result
Western Blot of recombinant histone H3.3 (1) and acid extracts of HeLa cells (2), using RM135 at 0.025 ug/mL, showed a band of histone H3 dimethylated at Lysine 4 (K4me2) in HeLa cells.

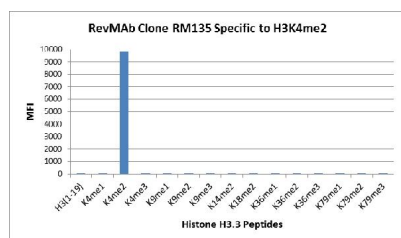


Figure 2. Specificity Test result
RM135 specifically reacts to Histone H3 dimethylated at Lysine 4 (K4me2). No cross reactivity with monomethylated Lysine 4 (K4me1) or trimethylated Lysine 4 (K4me3), or other methylations in histone H3.

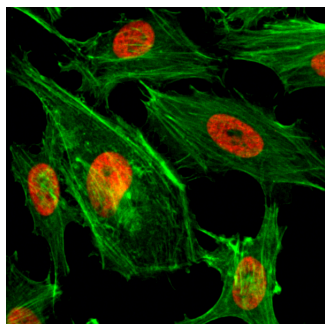


Figure 3. ICC result
Immunocytochemistry of HeLa cells treated with sodium butyrate, using Dimethyl-Histone H3 (Lys4) Rabbit mAb RM135 (red). Actin filaments have been labeled with fluorescein phalloidin (green).

Submit a product review to Biocompare.com

Submit a review of this product to Biocompare.com to receive a \$20 Amazon.com giftcard! Your reviews help your fellow scientists make the right decisions. Thank you for your contribution.



Anti-Dimethyl-Histone H3 (Lys4) H3F3A Rabbit Monoclonal Antibody, Clone#RM135