

Anti-Trimethyl-Histone H3 (Lys4) H3F3A Rabbit Monoclonal Antibody, Clone#RM137

Catalog Number: M06819-5

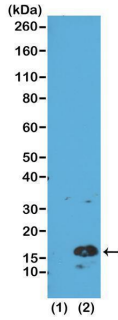
Overview

Product Name	Anti-Trimethyl-Histone H3 (Lys4) H3F3A Rabbit Monoclonal Antibody, Clone#RM137
Reactive Species	Human, Vertebrates
Description	Boster Bio Anti-Trimethyl-Histone H3 (Lys4) H3F3A Rabbit Monoclonal Antibody, Clone#RM137 (Catalog # M06819-5). Tested in WB, ELISA, Luminex applications. This antibody reacts with Human, Vertebrates.
Application	ELISA, WB, Luminex
Clonality	Monoclonal RM137
Formulation	50% Glycerol/PBS with 1% stabilizing protein and 0.09% sodium azide This antibody is supplied in a stabilized formulation. Compatibility with conjugation reactions depends on the chemistry of the conjugation method used. For conjugation methods that are not compatible with the stabilizing components present in this formulation, a carrier-free antibody format is required.
Storage Instructions	Store at -20°C for one year. Avoid repeated freeze-thaw cycles.
Host	Rabbit
Uniprot ID	P84243

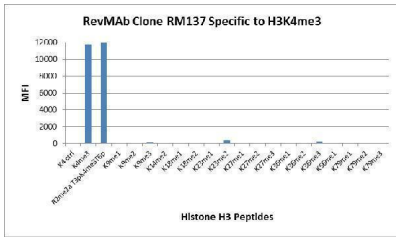
Technical Details

Immunogen	A trimethyl-peptide corresponding to Trimethyl-Histone H3 (Lys4)
Cross Reactivity	This antibody reacts to Histone H3 trimethylated at Lysine 4 (K4me3). No cross-reactivity with monomethylated Lysine 4 (K4me1) or dimethylated Lysine 4 (K4me2), or other methylation in histone H3.
Isotype	Rabbit IgG
Form	Liquid
Concentration	1 mg/mL
Purification	Protein A affinity purified from an animal origin-free culture supernatant
Suggested Dilutions	WB: 0.2 ug/mL – 1 ug/mL ELISA: 0.1 ug/mL – 0.5 ug/mL Luminex: 0.1 ug/mL – 0.5 ug/mL.

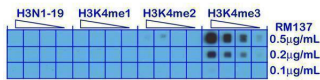
Anti-Trimethyl-Histone H3 (Lys4) H3F3A Rabbit Monoclonal Antibody, Clone#RM137 (M06819-5) Images



Western Blotting result Western Blot of recombinant histone H3.3 (1) and acid extracts of HeLa cells (2), using RM137 at 0.5 ug/mL, showed a band of histone H3 trimethylated at Lysine 4 (K4me3) in HeLa cells.



Specificity Test result RM137 specifically reacts to Histone H3 trimethylated at Lysine 4 (K4me3). No cross reactivity with other methylated lysines in Histone H3.



Dot Blot result A Peptide dotblot shows RM137 only reacts to Histone H3 trimethyl-Lysine 4 (K4me3). No cross reactivity with nonmodified Lysine 4 (H3N1-19), monomethylated Lysine 4 (K4me1) or dimethylated Lysine 4 (K4me2).

Submit a product review to Biocompare.com

Submit a review of this product to Biocompare.com to receive a \$20 Amazon.com giftcard! Your reviews help your fellow scientists make the right decisions. Thank you for your contribution.



Anti-Trimethyl-Histone H3 (Lys4) H3F3A Rabbit Monoclonal Antibody, Clone#RM137

For Research Use Only. Not for use in diagnostic procedures.