

Anti-PAPP-A Antibody (Monoclonal, ABM4C62)

Catalog Number: M06838

About PAPPA

Keratin 15 is a type I keratin which is expressed only in basal keratinocytes in stratified epithelia and does not appear to have a natural type II expression partner. Keratin 15 is down regulated in activated keratinocytes. Cytokeratin 15 is a specific marker of stem cells of the hair-follicle bulge and may be a useful marker for diagnosis between basal cell carcinoma (BCC) and trichoepithelioma. Trichoblastoma are benign neoplasms of follicular differentiation frequently found in nevus sebaceous. Many morphologic features are shared with nodular basal cell carcinoma, sometimes rendering a diagnosis difficult. Trichoblastoma and BCC show variable expression of Cytokeratin 15 and Cytokeratin 19, and absence of hair keratins.

Overview

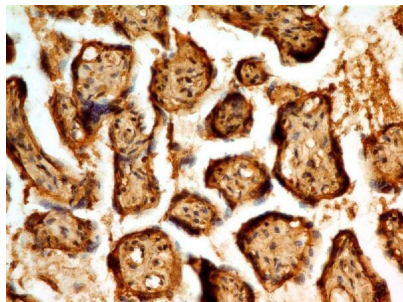
Product Name	Anti-PAPP-A Antibody (Monoclonal, ABM4C62)
Reactive Species	Human
Description	Boster Bio Anti-PAPP-A Antibody (Monoclonal, ABM4C62) (Catalog# M06838). Tested in IHC application(s). This antibody reacts with Human.
Conjugate	Biotin
Application	IHC
Clonality	Monoclonal ABM4C62
Formulation	100 µg in 200 µl PBS containing 0.05% stabilizing protein and 0.05% sodium azide This antibody is supplied in a stabilized formulation. Compatibility with conjugation reactions depends on the chemistry of the conjugation method used. For conjugation methods that are not compatible with the stabilizing components present in this formulation, a carrier-free antibody format is required.
Storage Instructions	Store the antibody at 4°C, stable for 6 months. For long-term storage, store at -20°C. Avoid repeated freeze and thaw cycles.
Host	Mouse
Uniprot ID	Q13219

Technical Details

Immunogen	A partial length recombinant PAPP-A protein (amino acids 332-561)
Predicted Reactive Species	Pig, Rabbit
Cross Reactivity	Does not cross-react with primate, avian or amphibian GR.
Isotype	IgG2b Kappa

Form	Liquid
Concentration	0.5-1mg/ml, actual concentration vary by lot. Use suggested dilution ratio to decide dilution procedure.
Purification	Protein G Chromatography
Suggested Dilutions	IHC: 5-10 µg/ml

Anti-PAPP-A Antibody (Monoclonal, ABM4C62) (M06838) Images



Immunohistochemical analysis of PAPP-A in human Placenta tissue using PAPP-A antibody (Clone: ABM4C62) at 5 &mu

Submit a product review to Biocompare.com

Submit a review of this product to Biocompare.com to receive a \$20 Amazon.com giftcard! Your reviews help your fellow scientists make the right decisions. Thank you for your contribution.



Anti-PAPP-A Antibody (Monoclonal, ABM4C62)

For Research Use Only. Not for use in diagnostic procedures.