

## Anti-EB2 (MAPRE2) Mouse Monoclonal Antibody [Clone ID: OTI7A2]

Catalog Number: M06859

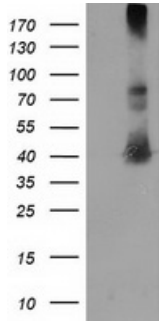
### Overview

Product Name	Anti-EB2 (MAPRE2) Mouse Monoclonal Antibody [Clone ID: OTI7A2]
Reactive Species	Human
Description	Boster Bio MAPRE2 (EB2) mouse monoclonal antibody, clone OTI7A2 (formerly 7A2). Catalog# M06859. Tested in FC, IF, IHC, WB. This antibody reacts with Human.
Application	Flow Cytometry, IF, IHC, WB
Clonality	Monoclonal OTI7A2
Formulation	PBS (pH 7.3) containing 1% stabilizing protein, 50% glycerol and 0.02% sodium azide. This antibody is supplied in a stabilized formulation. Compatibility with conjugation reactions depends on the chemistry of the conjugation method used. For conjugation methods that are not compatible with the stabilizing components present in this formulation, a carrier-free antibody format is required.
Storage Instructions	Store at -20°C as received.
Host	Mouse
Uniprot ID	Q15555

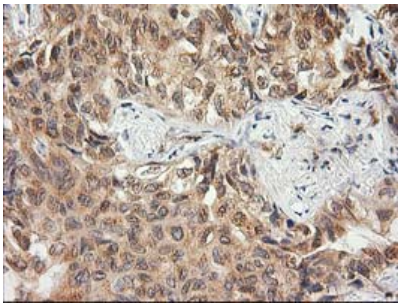
### Technical Details

Immunogen	Full length human recombinant protein of human MAPRE2 (NP_055083) produced in HEK293T cell.
Isotype	IgG2b
Concentration	0.93 mg/ml
Purification	Purified from mouse ascites fluids or tissue culture supernatant by affinity chromatography (protein A/G)
Suggested Dilutions	WB 1:2000 IHC 1:150 IF 1:100 Flow Cytometry 1:100

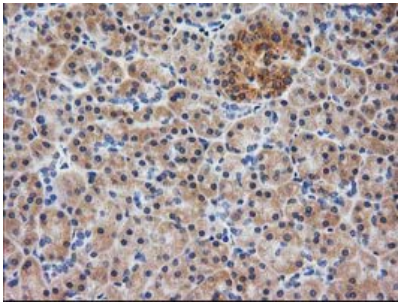
## Anti-EB2 (MAPRE2) Mouse Monoclonal Antibody [Clone ID: OTI7A2] (M06859) Images



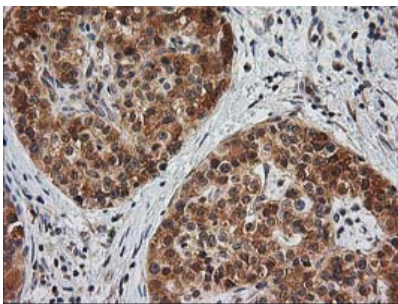
HEK293T cells were transfected with the pCMV6-ENTRY control (Left lane) or pCMV6-ENTRY MAPRE2 (Right lane) cDNA for 48 hrs and lysed. Equivalent amounts of cell lysates (5 ug per lane) were separated by SDS-PAGE and immunoblotted with anti-MAPRE2.



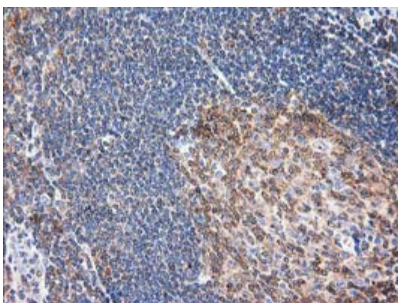
Immunohistochemical staining of paraffin-embedded Carcinoma of Human lung tissue using anti-MAPRE2 mouse monoclonal antibody. (Heat-induced epitope retrieval by 10mM citric buffer)



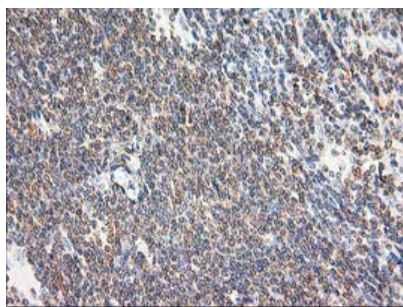
Immunohistochemical staining of paraffin-embedded Human pancreas tissue within the normal limits using anti-MAPRE2 mouse monoclonal antibody. (Heat-induced epitope retrieval by 10mM citric buffer)



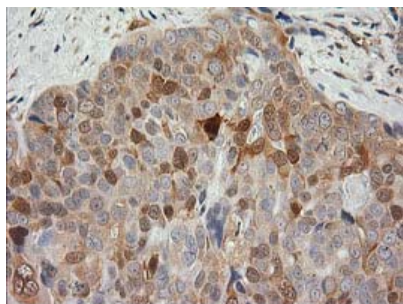
Immunohistochemical staining of paraffin-embedded Carcinoma of Human pancreas tissue using anti-MAPRE2 mouse monoclonal antibody. (Heat-induced epitope retrieval by 10mM citric buffer)



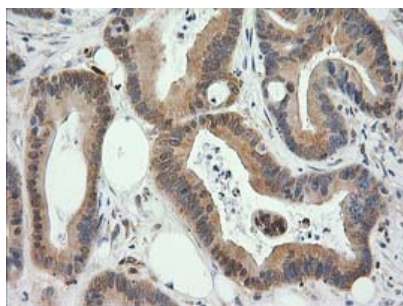
Immunohistochemical staining of paraffin-embedded Human lymph node tissue within the normal limits using anti-MAPRE2 mouse monoclonal antibody. (Heat-induced epitope retrieval by 10mM citric buffer)



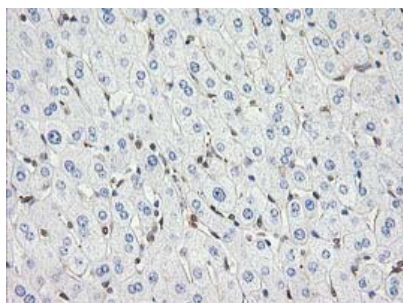
Immunohistochemical staining of paraffin-embedded Human lymphoma tissue using anti-MAPRE2 mouse monoclonal antibody. (Heat-induced epitope retrieval by 10mM citric buffer)



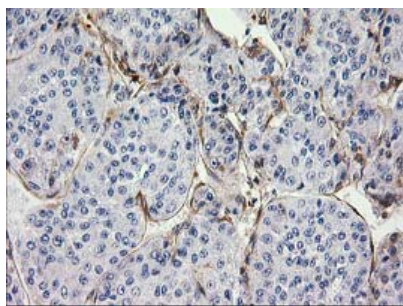
Immunohistochemical staining of paraffin-embedded Adenocarcinoma of Human breast tissue using anti-MAPRE2 mouse monoclonal antibody. (Heat-induced epitope retrieval by 10mM citric buffer)



Immunohistochemical staining of paraffin-embedded Adenocarcinoma of Human colon tissue using anti-MAPRE2 mouse monoclonal antibody. (Heat-induced epitope retrieval by 10mM citric buffer)

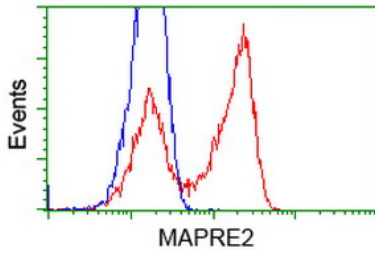


Immunohistochemical staining of paraffin-embedded Human liver tissue within the normal limits using anti-MAPRE2 mouse monoclonal antibody. (Heat-induced epitope retrieval by 10mM citric buffer)

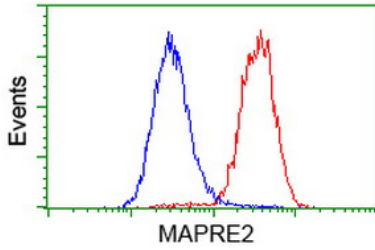


Immunohistochemical staining of paraffin-embedded Carcinoma of Human liver tissue using anti-MAPRE2 mouse monoclonal antibody. (Heat-induced epitope retrieval by 10mM citric buffer)

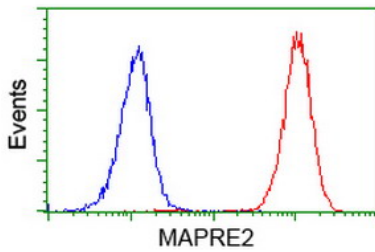
HEK293T cells transfected with either MAPRE2 (Myc-DDK-tagged) overexpress plasmid (Red) or empty vector control



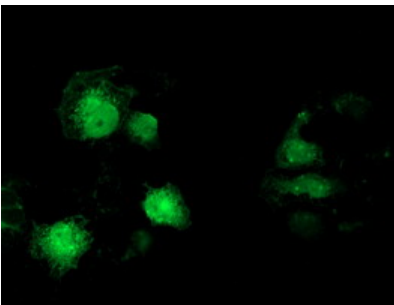
plasmid (Blue) were immunostained by anti-MAPRE2 antibody (M06859)



Flow cytometric Analysis of HeLa cells



Flow cytometric Analysis of Jurkat cells



Anti-MAPRE2 mouse monoclonal antibody (M06859) immunofluorescent staining of COS7 cells transiently transfected by pCMV6-ENTRY MAPRE2.

## Submit a product review to Biocompare.com

Submit a review of this product to Biocompare.com to receive a \$20 Amazon.com giftcard! Your reviews help your fellow scientists make the right decisions. Thank you for your contribution.



Anti-EB2 (MAPRE2) Mouse Monoclonal Antibody [Clone ID: OT17A2]

For Research Use Only. Not for use in diagnostic procedures.