

Anti-EB2 (MAPRE2) Mouse Monoclonal Antibody [Clone ID: OTI1A3]

Catalog Number: M06859-1

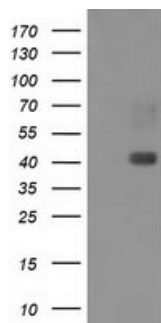
Overview

Product Name	Anti-EB2 (MAPRE2) Mouse Monoclonal Antibody [Clone ID: OTI1A3]
Reactive Species	Dog, Human, Monkey, Rat
Description	Boster Bio MAPRE2 (EB2) mouse monoclonal antibody, clone OTI1A3 (formerly 1A3). Catalog# M06859-1. Tested in FC, IF, WB. This antibody reacts with Human, Monkey, Rat, Dog.
Application	Flow Cytometry, IF, WB
Clonality	Monoclonal OTI1A3
Formulation	PBS (PH 7.3) containing 1% BSA, 50% glycerol and 0.02% sodium azide.
Storage Instructions	Store at -20°C as received.
Host	Mouse
Uniprot ID	Q15555

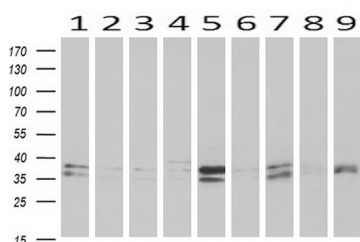
Technical Details

Immunogen	Full length human recombinant protein of human MAPRE2 (NP_055083) produced in HEK293T cell.
Isotype	IgG2b
Concentration	0.69 mg/ml
Purification	Purified from mouse ascites fluids or tissue culture supernatant by affinity chromatography (protein A/G)
Suggested Dilutions	Dilute the sample so that the expected range of concentrations fall within the detection range of this kit. If the expected range of concentration is unknown, a pilot test should be conducted to decide the optimal dilution ratio for your samples. Some PubMed article(s) citing the expression level of this target are as follows:

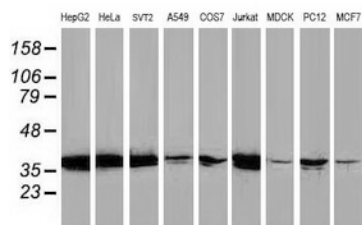
Anti-EB2 (MAPRE2) Mouse Monoclonal Antibody [Clone ID: OTI1A3] (M06859-1) Images



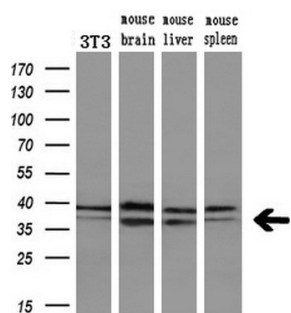
HEK293T cells were transfected with the pCMV6-ENTRY control (Left lane) or pCMV6-ENTRY MAPRE2 (Right lane) cDNA for 48 hrs and lysed. Equivalent amounts of cell lysates (5 ug per lane) were separated by SDS-PAGE and immunoblotted with anti-MAPRE2.



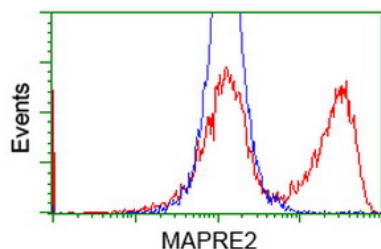
Western blot analysis of extracts (10ug) from 9 Human tissue by using anti-MAPRE2 monoclonal antibody at 1:200 (1: Testis; 2: Omentum; 3: Uterus; 4: Breast; 5: Brain; 6: Liver; 7: Ovary; 8: Thyroid gland; 9: colon).



Western blot analysis of extracts (35ug) from 9 different cell lines by using anti-MAPRE2 monoclonal antibody.

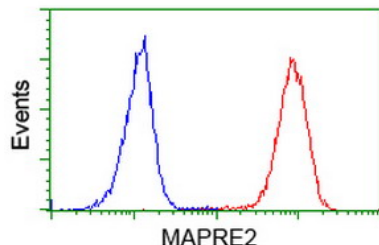
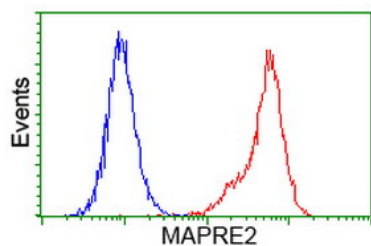


Western blot analysis of extracts (10ug) from a mouse cell line and 3 different mouse tissues by using anti-MAPRE2 monoclonal antibody (1:200).

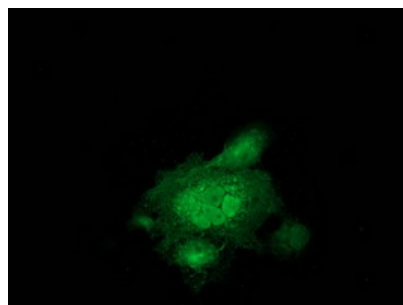


HEK293T cells transfected with either MAPRE2 (Myc-DDK-tagged) overexpress plasmid (Red) or empty vector control plasmid (Blue) were immunostained by anti-MAPRE2 antibody (M06859-1)

Flow cytometric Analysis of HeLa cells



Flow cytometric Analysis of Jurkat cells



Anti-MAPRE2 mouse monoclonal antibody (M06859-1)
immunofluorescent staining of COS7 cells transiently
transfected by pCMV6-ENTRY MAPRE2.

Submit a product review to Biocompare.com

Submit a review of this product to Biocompare.com to receive a \$20 Amazon.com giftcard! Your reviews help your fellow scientists make the right decisions. Thank you for your contribution.



Anti-EB2 (MAPRE2) Mouse Monoclonal Antibody [Clone ID: OTI1A3]