

Anti-beta II Tubulin (TUBB2A) Mouse Monoclonal Antibody [Clone ID: OTI3E6]

Catalog Number: M06868-2

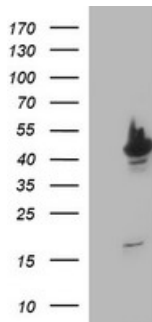
Overview

| | |
|----------------------|--|
| Product Name | Anti-beta II Tubulin (TUBB2A) Mouse Monoclonal Antibody [Clone ID: OTI3E6] |
| Reactive Species | Human, Mouse, Rat |
| Description | Boster Bio TUBB2A mouse monoclonal antibody, clone OTI3E6. Catalog# M06868-2. Tested in IF, IHC, WB. This antibody reacts with Human, Mouse, Rat. |
| Application | IF, IHC, WB |
| Clonality | Monoclonal OTI3E6 |
| Formulation | PBS (pH 7.3) containing 1% stabilizing protein, 50% glycerol and 0.02% sodium azide. This antibody is supplied in a stabilized formulation. Compatibility with conjugation reactions depends on the chemistry of the conjugation method used. For conjugation methods that are not compatible with the stabilizing components present in this formulation, a carrier-free antibody format is required. |
| Storage Instructions | Store at -20°C as received. |
| Host | Mouse |
| Uniprot ID | Q13885 |

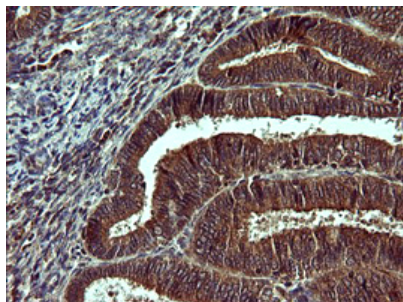
Technical Details

| | |
|---------------------|---|
| Immunogen | Full length human recombinant protein of human TUBB2A (NP_001060) produced in HEK293T cell. |
| Isotype | IgG2a |
| Concentration | 1 mg/ml |
| Purification | Purified from mouse ascites fluids or tissue culture supernatant by affinity chromatography (protein A/G) |
| Suggested Dilutions | WB: 1:4000 IF: 1:100 IF: 1:150 |

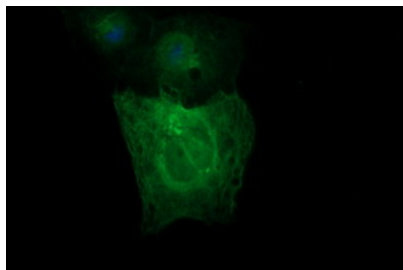
Anti-beta II Tubulin (TUBB2A) Mouse Monoclonal Antibody [Clone ID: OTI3E6] (M06868-2) Images



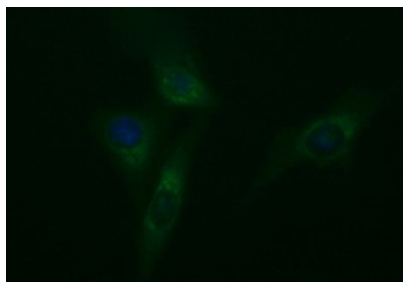
HEK293T cells were transfected with the pCMV6-ENTRY control (Left lane) or pCMV6-ENTRY TUBB2A (Right lane) cDNA for 48 hrs and lysed. Equivalent amounts of cell lysates (5 ug per lane) were separated by SDS-PAGE and immunoblotted with anti-TUBB2A.



Immunohistochemical staining of paraffin-embedded Adenocarcinoma of Human endometrium tissue using anti-TUBB2A mouse monoclonal antibody. (M06868-2)



Anti-TUBB2A mouse monoclonal antibody (M06868-2) immunofluorescent staining of COS7 cells transiently transfected by pCMV6-ENTRY TUBB2A.



Immunofluorescent staining of HeLa cells using anti-TUBB2A mouse monoclonal antibody (M06868-2).

Submit a product review to [Biocompare.com](https://www.biocompare.com)

Submit a review of this product to [Biocompare.com](https://www.biocompare.com) to receive a \$20 Amazon.com giftcard! Your reviews help your fellow scientists make the right decisions. Thank you for your contribution.



For Research Use Only. Not for use in diagnostic procedures.