

Anti-GGT3P Antibody (Center)

Catalog Number: M06875

About GGT3P

Tubulin is the major constituent of microtubules. It binds two moles of GTP, one at an exchangeable site on the beta chain and one at a non-exchangeable site on the alpha chain (By similarity).

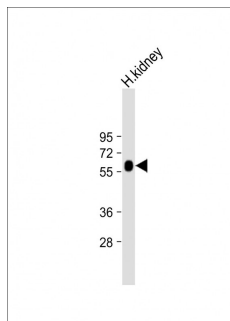
Overview

Product Name	Anti-GGT3P Antibody (Center)
Reactive Species	Human
Description	Boster Bio Anti-GGT3P Antibody (Center) (Catalog # M06875). Tested in WB application(s). This antibody reacts with Human.
Application	WB
Clonality	Polyclonal
Formulation	Purified polyclonal antibody supplied in PBS with 0.09% (W/V) sodium azide.
Storage Instructions	Maintain refrigerated at 2-8°C for up to 2 weeks. For long-term storage, store at -20°C in small aliquots to prevent freeze-thaw cycles.
Host	Rabbit
Uniprot ID	A6NGU5

Technical Details

Immunogen	This GGT3P antibody is generated from a rabbit immunized with a KLH conjugated synthetic peptide between 176-207 amino acids from the Central region of human GGT3P.
Predicted Reactive Species	Bovine, Chicken, Monkey, Pig, Xenopus
Isotype	Rabbit IgG
Purification	This antibody is purified through a protein A column, followed by peptide affinity purification.
Suggested Dilutions	WB: 1:2000

Anti-GGT3P Antibody (Center) (M06875) Images



Anti-GGT3P Antibody (Center) at 1:2000 dilution + Human kidney lysate Lysates/proteins at 20 μ g per lane. Secondary Goat Anti-Rabbit IgG, (H+L), Peroxidase conjugated at 1/10000 dilution. Predicted band size : 62 kDa Blocking/Dilution buffer: 5% NFDN/TBST.

Submit a product review to Biocompare.com

Submit a review of this product to Biocompare.com to receive a \$20 Amazon.com giftcard! Your reviews help your fellow scientists make the right decisions. Thank you for your contribution.



Anti-GGT3P Antibody (Center)

For Research Use Only. Not for use in diagnostic procedures.