

Anti-L Kynurenine Hydrolase (KYNU) Mouse Monoclonal Antibody [Clone ID: OT11H1]

Catalog Number: M06885

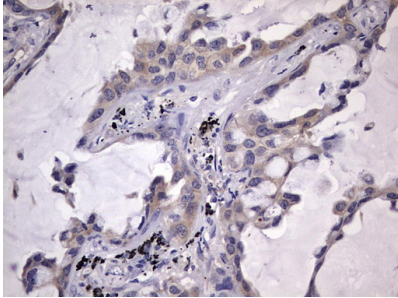
Overview

Product Name	Anti-L Kynurenine Hydrolase (KYNU) Mouse Monoclonal Antibody [Clone ID: OT11H1]
Reactive Species	Human, Rat
Description	Boster Bio KYNU mouse monoclonal antibody, clone OT11H1 (formerly 1H1). Catalog# M06885. Tested in IHC. This antibody reacts with Human, Rat.
Application	IHC
Clonality	Monoclonal OT11H1
Formulation	PBS (pH 7.3) containing 1% stabilizing protein, 50% glycerol and 0.02% sodium azide. This antibody is supplied in a stabilized formulation. Compatibility with conjugation reactions depends on the chemistry of the conjugation method used. For conjugation methods that are not compatible with the stabilizing components present in this formulation, a carrier-free antibody format is required.
Storage Instructions	Store at -20°C as received.
Host	Mouse
Uniprot ID	Q16719

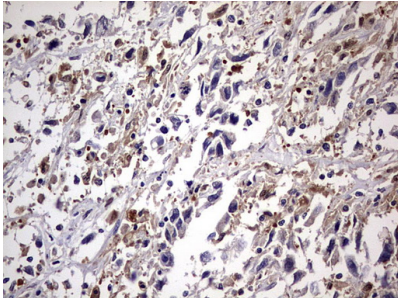
Technical Details

Immunogen	Human recombinant protein fragment corresponding to amino acids 1-216 of human KYNU (NP_001028170) produced in E.coli.
Isotype	IgG2b
Concentration	1 mg/ml
Purification	Purified from mouse ascites fluids or tissue culture supernatant by affinity chromatography (protein A/G)
Suggested Dilutions	IHC 1:150

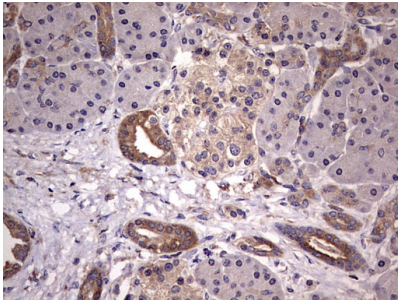
Anti-L Kynurenine Hydrolase (KYNU) Mouse Monoclonal Antibody [Clone ID: OTI1H1] (M06885) Images



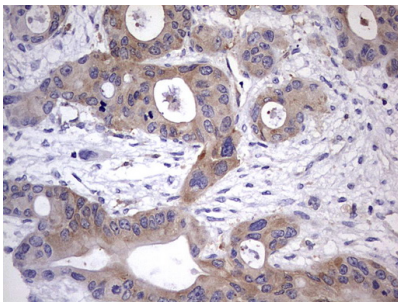
Immunohistochemical staining of paraffin-embedded Carcinoma of Human lung tissue using anti-KYNU mouse monoclonal antibody. (M06885; heat-induced epitope retrieval by 1 mM EDTA in 10mM Tris)



Immunohistochemical staining of paraffin-embedded Adenocarcinoma of Human ovary tissue using anti-KYNU mouse monoclonal antibody. (M06885; heat-induced epitope retrieval by 1 mM EDTA in 10mM Tris)

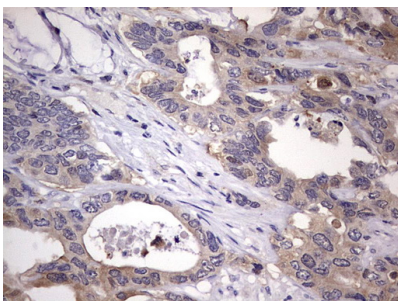
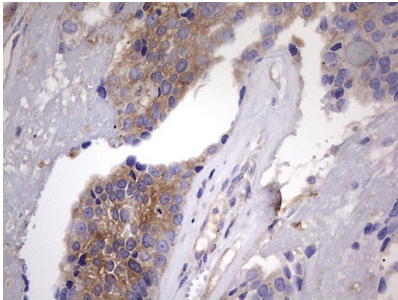
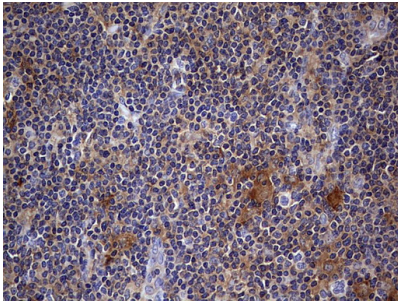
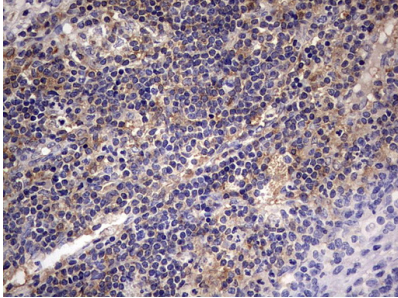
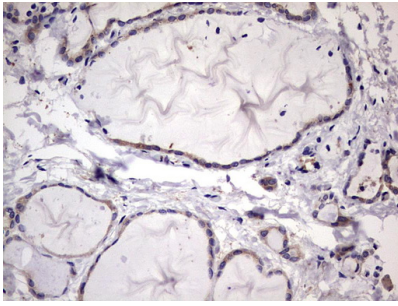


Immunohistochemical staining of paraffin-embedded Human pancreas tissue within the normal limits using anti-KYNU mouse monoclonal antibody. (M06885; heat-induced epitope retrieval by 1 mM EDTA in 10mM Tris)



Immunohistochemical staining of paraffin-embedded Carcinoma of Human pancreas tissue using anti-KYNU mouse monoclonal antibody. (M06885; heat-induced epitope retrieval by 1 mM EDTA in 10mM Tris)

Immunohistochemical staining of paraffin-embedded Human thyroid tissue within the normal limits using anti-KYNU mouse monoclonal antibody. (M06885; heat-induced epitope retrieval by 1 mM EDTA in 10mM Tris)



Immunohistochemical staining of paraffin-embedded Human lymph node tissue within the normal limits using anti-KYNU mouse monoclonal antibody. (M06885; heat-induced epitope retrieval by 1 mM EDTA in 10mM Tris

Immunohistochemical staining of paraffin-embedded Human lymphoma tissue using anti-KYNU mouse monoclonal antibody. (M06885; heat-induced epitope retrieval by 1 mM EDTA in 10mM Tris

Immunohistochemical staining of paraffin-embedded Adenocarcinoma of Human breast tissue using anti-KYNU mouse monoclonal antibody. (M06885; heat-induced epitope retrieval by 1 mM EDTA in 10mM Tris

Immunohistochemical staining of paraffin-embedded Adenocarcinoma of Human colon tissue using anti-KYNU mouse monoclonal antibody. (M06885; heat-induced epitope retrieval by 1 mM EDTA in 10mM Tris

Submit a product review to [Biocompare.com](https://www.biocompare.com)



Submit a review of this product to Biocompare.com to receive a \$20 Amazon.com giftcard! Your reviews help your fellow scientists make the right decisions. Thank you for your contribution.

Anti-L Kynurenine Hydrolase (KYNU) Mouse Monoclonal Antibody [Clone ID: OT11H1]

For Research Use Only. Not for use in diagnostic procedures.