

## Anti-Visinin-like Protein 1 Monoclonal Antibody

Catalog Number: M06959-1

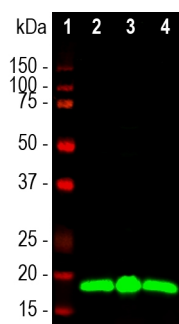
### Overview

Product Name	Anti-Visinin-like Protein 1 Monoclonal Antibody
Reactive Species	Human, Mouse, Rat
Description	Boster Bio Anti-Visinin-like Protein 1 Monoclonal Antibody catalog # M06959-1. Tested in IF, IHC, WB applications. This antibody reacts with Human, Mouse, Rat.
Application	IF, IHC, WB
Clonality	Monoclonal
Formulation	Purified antibody at 1mg/mL in 50% PBS, 50% glycerol plus 5mM NaN <sub>3</sub>
Storage Instructions	Store at -20°C for one year. For short term storage and frequent use, store at 4°C for up to one month. Avoid repeated freeze-thaw cycles.
Host	Mouse
Uniprot ID	P62760

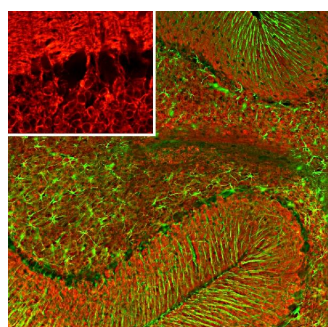
### Technical Details

Immunogen	Recombinant full length human protein
Concentration	0.5-1mg/ml, actual concentration vary by lot. Use suggested dilution ratio to decide dilution procedure.
Suggested Dilutions	<p>Dilute the sample so that the expected range of concentrations fall within the detection range of this kit.</p> <p>If the expected range of concentration is unknown, a pilot test should be conducted to decide the optimal dilution ratio for your samples.</p> <p>Some PubMed article(s) citing the expression level of this target are as follows:</p> <p>Boster Bio's internal QC testing used:</p> <p>WB: 500-1,000. IF/ICC and IHC: 1:500-1,000</p>

## Anti-Visinin-like Protein 1 Monoclonal Antibody (M06959-1) Images



Western blot analysis of different tissue lysates using mouse mAb to Visinin-like Protein 1 (VLP1), M06959-1, dilution 1:1,000 in green: [1] protein standard (red), [2] rat brain [3] rat cerebellum, and [4] mouse brain. The band at around 20kDa mark corresponds to VLP1



Immunofluorescent analysis of rat cerebellum section stained with mouse mAb to VLP1, M06959-1, dilution 1:500, in red and costained with rabbit pAb to GFAP, dilution 1:5,000 in green. The blue is DAPI staining of nuclear DNA. Following transcardial perfusion of rat with 4% paraformaldehyde, brain was post fixed for 24 hours, cut to 45M, and free-floating sections were stained with the above antibodies. The VLP1 antibody reveals protein expressed in granule cell membranes and in synapses in the white matter and molecular layers of the cerebellum. The GFAP antibody stains the processes of Bergmann glia and astroglia.

## Submit a product review to Biocompare.com

Submit a review of this product to Biocompare.com to receive a \$20 Amazon.com giftcard! Your reviews help your fellow scientists make the right decisions. Thank you for your contribution.



Anti-Visinin-like Protein 1 Monoclonal Antibody