

Anti-Visinin-like Protein 1 Antibody

Catalog Number: M06959-2

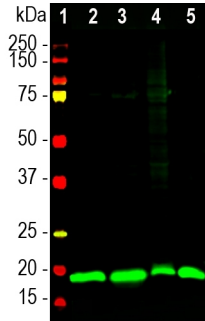
Overview

Product Name	Anti-Visinin-like Protein 1 Antibody
Reactive Species	Human, Mouse, Rat
Description	Boster Bio Anti-Visinin-like Protein 1 Antibody catalog # M06959-2. Tested in IF, IHC, WB applications. This antibody reacts with Human, Mouse, Rat.
Application	IF, IHC, WB
Clonality	Polyclonal
Formulation	Purified antibody at 1mg/mL in 50% PBS, 50% glycerol plus 5mM NaN ₃
Storage Instructions	Store at -20°C for one year. For short term storage and frequent use, store at 4°C for up to one month. Avoid repeated freeze-thaw cycles.
Host	Rabbit
Uniprot ID	P62760

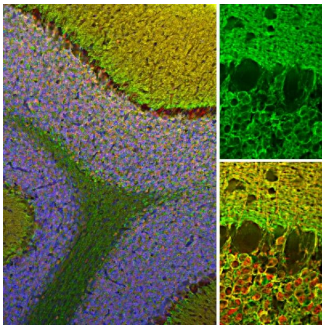
Technical Details

Immunogen	Full length recombinant human VLP1
Concentration	0.5-1mg/ml, actual concentration vary by lot. Use suggested dilution ratio to decide dilution procedure.
Suggested Dilutions	<p>Dilute the sample so that the expected range of concentrations fall within the detection range of this kit.</p> <p>If the expected range of concentration is unknown, a pilot test should be conducted to decide the optimal dilution ratio for your samples.</p> <p>Some PubMed article(s) citing the expression level of this target are as follows: Boster Bio's internal QC testing used WB 1:10,000 IF/IHC 1:2,000</p> <p>For protocols, please visit https://www.bosterbio.com/protocol-and-troubleshooting/</p>

Anti-Visinin-like Protein 1 Antibody (M06959-2) Images



Western blot analysis of different tissue lysates using rabbit pAb to visinin-like Protein 1 (VLP1), M06959-2, dilution 1:20,000 in green: [1] protein standard (red), [2] rat brain [3] mouse brain, [4] pig hippocampus, and [5] cow cerebellum. The band at ~20kDa corresponds to the VLP1 protein.



Immunofluorescent analysis of rat cerebellum section stained with rabbit pAb to VLP1, M06959-2, dilution 1:2,000 in green, and costained with mouse mAb to calretinin, dilution 1:2,000 in red. The blue is DAPI staining of nuclear DNA. Following transcatheter perfusion of rat with 4% paraformaldehyde, brain was post fixed for 24 hours, cut to 45M, and free-floating sections were stained with the above antibodies. The VLP1 antibody reveals protein expressed in granule cells membranes and their synapses

Submit a product review to [Biocompare.com](https://www.biocompare.com)

Submit a review of this product to [Biocompare.com](https://www.biocompare.com) to receive a \$20 Amazon.com giftcard! Your reviews help your fellow scientists make the right decisions. Thank you for your contribution.



Anti-Visinin-like Protein 1 Antibody