

Anti-Aminopeptidase A (ENPEP) Mouse Monoclonal Antibody [Clone ID: OTI4G8]

Catalog Number: M06961

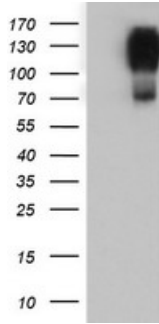
Overview

| | |
|----------------------|--|
| Product Name | Anti-Aminopeptidase A (ENPEP) Mouse Monoclonal Antibody [Clone ID: OTI4G8] |
| Reactive Species | Human, Rat |
| Description | Boster Bio ENPEP mouse monoclonal antibody, clone OTI4G8 (formerly 4G8). Catalog# M06961. Tested in FC, IF, IHC, WB. This antibody reacts with Human, Rat. |
| Application | Flow Cytometry, IF, IHC, WB |
| Clonality | Monoclonal OTI4G8 |
| Formulation | PBS (pH 7.3) containing 1% stabilizing protein, 50% glycerol and 0.02% sodium azide. This antibody is supplied in a stabilized formulation. Compatibility with conjugation reactions depends on the chemistry of the conjugation method used. For conjugation methods that are not compatible with the stabilizing components present in this formulation, a carrier-free antibody format is required. |
| Storage Instructions | Store at -20°C as received. |
| Host | Mouse |
| Uniprot ID | Q07075 |

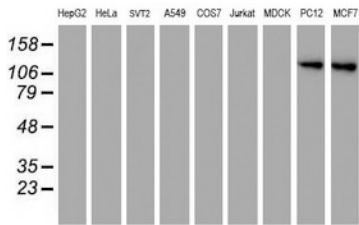
Technical Details

| | |
|---------------------|---|
| Immunogen | Full length human recombinant protein of human ENPEP (NP_001968) produced in HEK293T cell. |
| Isotype | IgG2b |
| Concentration | 1 mg/ml |
| Purification | Purified from mouse ascites fluids or tissue culture supernatant by affinity chromatography (protein A/G) |
| Suggested Dilutions | WB 1:500~2000 IHC 1:150 IF 1:100 Flow Cytometry 1:100 |

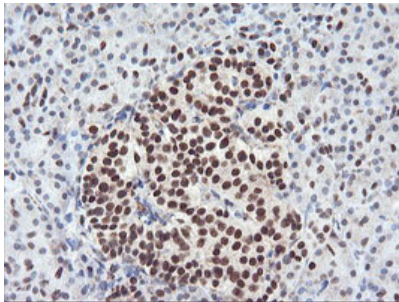
Anti-Aminopeptidase A (ENPEP) Mouse Monoclonal Antibody [Clone ID: OTI4G8] (M06961) Images



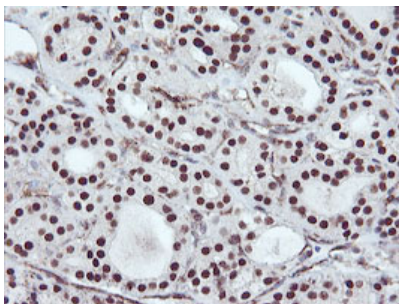
HEK293T cells were transfected with the pCMV6-ENTRY control (Left lane) or pCMV6-ENTRY ENPEP (Right lane) cDNA for 48 hrs and lysed. Equivalent amounts of cell lysates (5 ug per lane) were separated by SDS-PAGE and immunoblotted with anti-ENPEP.



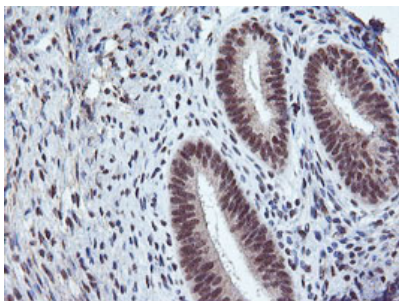
Western blot analysis of extracts (35ug) from 9 different cell lines by using anti-ENPEP monoclonal antibody.



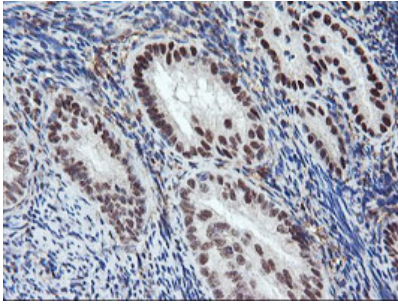
Immunohistochemical staining of paraffin-embedded Human pancreas tissue within the normal limits using anti-ENPEP mouse monoclonal antibody. (Heat-induced epitope retrieval by 10mM citric buffer)



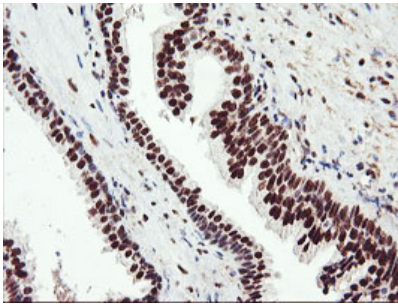
Immunohistochemical staining of paraffin-embedded Carcinoma of Human thyroid tissue using anti-ENPEP mouse monoclonal antibody. (Heat-induced epitope retrieval by 10mM citric buffer)



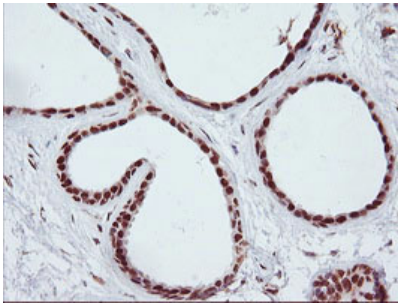
Immunohistochemical staining of paraffin-embedded Human endometrium tissue within the normal limits using anti-ENPEP mouse monoclonal antibody. (Heat-induced epitope retrieval by 10mM citric buffer)



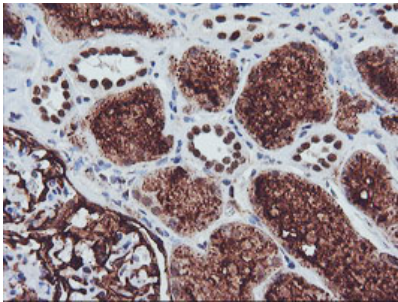
Immunohistochemical staining of paraffin-embedded Adenocarcinoma of Human endometrium tissue using anti-ENPEP mouse monoclonal antibody. (Heat-induced epitope retrieval by 10mM citric buffer)



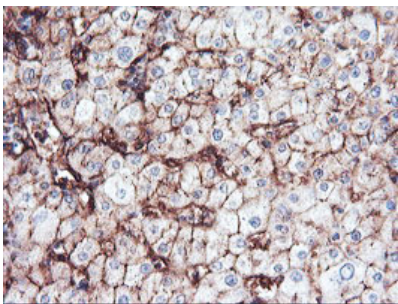
Immunohistochemical staining of paraffin-embedded Human prostate tissue within the normal limits using anti-ENPEP mouse monoclonal antibody. (Heat-induced epitope retrieval by 10mM citric buffer)



Immunohistochemical staining of paraffin-embedded Human breast tissue within the normal limits using anti-ENPEP mouse monoclonal antibody. (Heat-induced epitope retrieval by 10mM citric buffer)

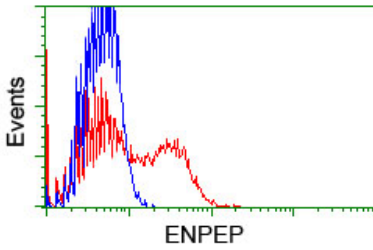


Immunohistochemical staining of paraffin-embedded Human Kidney tissue within the normal limits using anti-ENPEP mouse monoclonal antibody. (Heat-induced epitope retrieval by 10mM citric buffer)

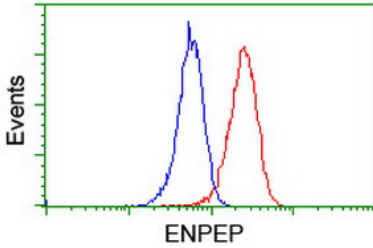


Immunohistochemical staining of paraffin-embedded Human liver tissue within the normal limits using anti-ENPEP mouse monoclonal antibody. (Heat-induced epitope retrieval by 10mM citric buffer)

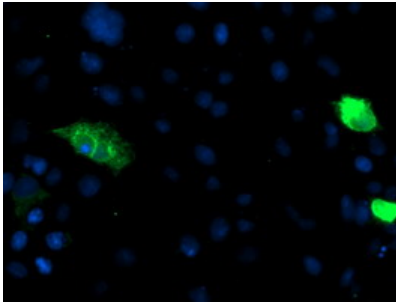
HEK293T cells transfected with either ENPEP (Myc-DDK-tagged) overexpress plasmid (Red) or empty vector control



plasmid (Blue) were immunostained by anti-ENPEP antibody (M06961)



Flow cytometric Analysis of Jurkat cells



Anti-ENPEP mouse monoclonal antibody (M06961) immunofluorescent staining of COS7 cells transiently transfected by pCMV6-ENTRY ENPEP.

Submit a product review to Biocompare.com

Submit a review of this product to Biocompare.com to receive a \$20 Amazon.com giftcard! Your reviews help your fellow scientists make the right decisions. Thank you for your contribution.



Anti-Aminopeptidase A (ENPEP) Mouse Monoclonal Antibody [Clone ID: OTI4G8]

For Research Use Only. Not for use in diagnostic procedures.