

Anti-TRAP alpha (SSR1) Mouse Monoclonal Antibody [Clone ID: OTI4C7]

Catalog Number: M06993

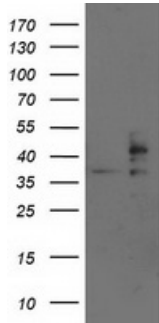
Overview

Product Name	Anti-TRAP alpha (SSR1) Mouse Monoclonal Antibody [Clone ID: OTI4C7]
Reactive Species	Dog, Human, Monkey, Mouse, Rat
Description	Boster Bio SSR1 (TRAP alpha) mouse monoclonal antibody, clone OTI4C7 (formerly 4C7). Catalog# M06993. Tested in FC, IF, IHC, WB. This antibody reacts with Human, Monkey, Mouse, Rat, Dog.
Application	Flow Cytometry, IF, IHC, WB
Clonality	Monoclonal OTI4C7
Formulation	PBS (pH 7.3) containing 1% stabilizing protein, 50% glycerol and 0.02% sodium azide. This antibody is supplied in a stabilized formulation. Compatibility with conjugation reactions depends on the chemistry of the conjugation method used. For conjugation methods that are not compatible with the stabilizing components present in this formulation, a carrier-free antibody format is required.
Storage Instructions	Store at -20°C as received.
Host	Mouse
Uniprot ID	P43307

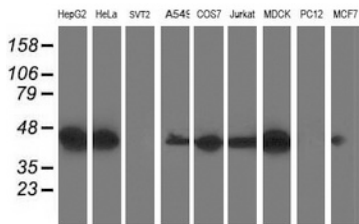
Technical Details

Immunogen	Full length human recombinant protein of human SSR1 (NP_003135) produced in HEK293 cell.
Isotype	IgG1
Concentration	0.95 mg/ml
Purification	Purified from mouse ascites fluids or tissue culture supernatant by affinity chromatography (protein A/G)
Suggested Dilutions	WB 1:500~2000 IHC 1:150 IF 1:50~100 Flow Cytometry 1:100

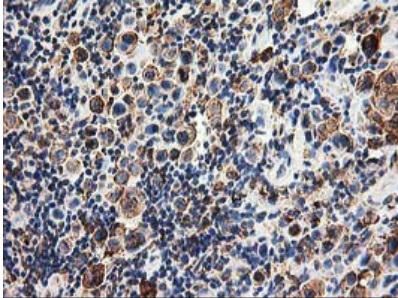
Anti-TRAP alpha (SSR1) Mouse Monoclonal Antibody [Clone ID: OTI4C7] (M06993) Images



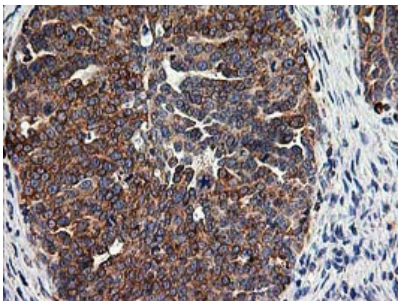
HEK293T cells were transfected with the pCMV6-ENTRY control (Left lane) or pCMV6-ENTRY SSR1 (Right lane) cDNA for 48 hrs and lysed. Equivalent amounts of cell lysates (5 ug per lane) were separated by SDS-PAGE and immunoblotted with anti-SSR1.



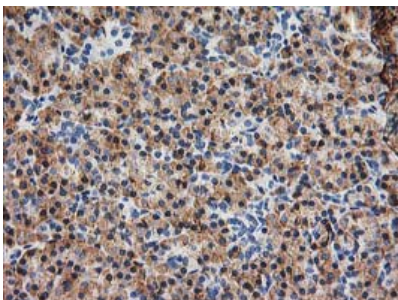
Western blot analysis of extracts (35ug) from 9 different cell lines by using anti-SSR1 monoclonal antibody.



Immunohistochemical staining of paraffin-embedded Carcinoma of Human lung tissue using anti-SSR1 mouse monoclonal antibody. (Heat-induced epitope retrieval by 10mM citric buffer)



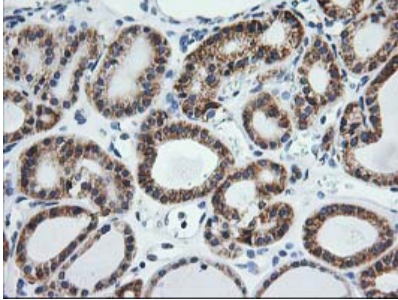
Immunohistochemical staining of paraffin-embedded Adenocarcinoma of Human ovary tissue using anti-SSR1 mouse monoclonal antibody. (Heat-induced epitope retrieval by 10mM citric buffer)



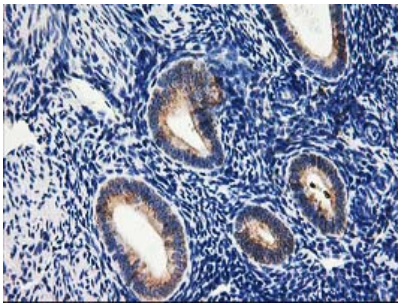
Immunohistochemical staining of paraffin-embedded Human pancreas tissue within the normal limits using anti-SSR1 mouse monoclonal antibody. (Heat-induced epitope retrieval by 10mM citric buffer)



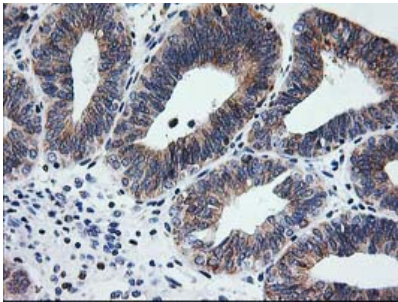
Immunohistochemical staining of paraffin-embedded Human thyroid tissue within the normal limits using anti-SSR1 mouse monoclonal antibody. (Heat-induced epitope retrieval by 10mM citric buffer)



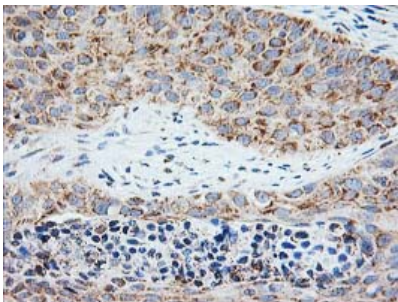
Immunohistochemical staining of paraffin-embedded Carcinoma of Human thyroid tissue using anti-SSR1 mouse monoclonal antibody. (Heat-induced epitope retrieval by 10mM citric buffer)



Immunohistochemical staining of paraffin-embedded Human endometrium tissue within the normal limits using anti-SSR1 mouse monoclonal antibody. (Heat-induced epitope retrieval by 10mM citric buffer)

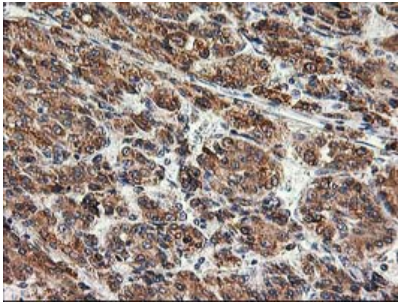


Immunohistochemical staining of paraffin-embedded Adenocarcinoma of Human endometrium tissue using anti-SSR1 mouse monoclonal antibody. (Heat-induced epitope retrieval by 10mM citric buffer)

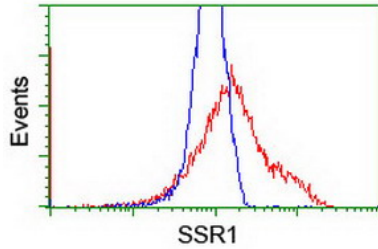


Immunohistochemical staining of paraffin-embedded Carcinoma of Human bladder tissue using anti-SSR1 mouse monoclonal antibody. (Heat-induced epitope retrieval by 10mM citric buffer)

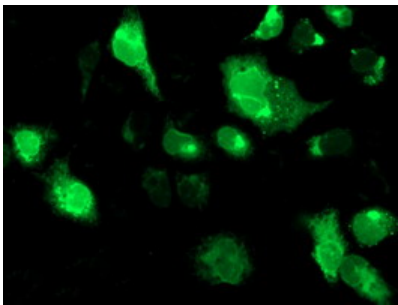
Immunohistochemical staining of paraffin-embedded Carcinoma of Human liver tissue using anti-SSR1 mouse monoclonal antibody. (Heat-induced epitope retrieval by



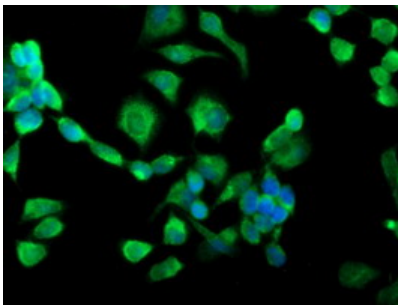
10mM citric buffer



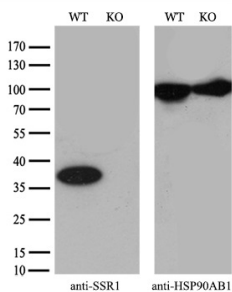
HEK293T cells transfected with either SSR1 (Myc-DDK-tagged) overexpress plasmid (Red) or empty vector control plasmid (Blue) were immunostained by anti-SSR1 antibody (M06993)



Anti-SSR1 mouse monoclonal antibody (M06993) immunofluorescent staining of COS7 cells transiently transfected by pCMV6-ENTRY SSR1.



Immunofluorescent staining of HeLa cells using anti-SSR1 mouse monoclonal antibody (M06993).



Equivalent amounts of cell lysates (10 ug per lane) of wild-type HeLa cells (WT) and SSR1-Knockout HeLa cells (KO) were separated by SDS-PAGE and immunoblotted with anti-SSR1 monoclonal antibody M06993 (1:2000). Then the blotted membrane was stripped and reprobred with anti-HSP90 antibody as a loading control.

Submit a product review to [Biocompare.com](https://www.biocompare.com)

Submit a review of this product to [Biocompare.com](https://www.biocompare.com) to receive a \$20 Amazon.com giftcard! Your



reviews help your fellow scientists make the right decisions. Thank you for your contribution.

Anti-TRAP alpha (SSR1) Mouse Monoclonal Antibody [Clone ID: OTI4C7]

For Research Use Only. Not for use in diagnostic procedures.