

Anti-TWF1 Antibody (Center)

Catalog Number: M07004

About TWF1

Actin-binding protein involved in motile and morphological processes. Inhibits actin polymerization, likely by sequestering G-actin. By capping the barbed ends of filaments, it also regulates motility. Seems to play an important role in clathrin-mediated endocytosis and distribution of endocytic organelles (By similarity).

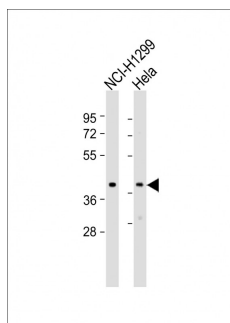
Overview

Product Name	Anti-TWF1 Antibody (Center)
Reactive Species	Human
Description	Boster Bio Anti-TWF1 Antibody (Center) (Catalog # M07004). Tested in WB application(s). This antibody reacts with Human.
Application	WB
Clonality	Polyclonal
Formulation	Purified polyclonal antibody supplied in PBS with 0.09% (W/V) sodium azide.
Storage Instructions	Maintain refrigerated at 2-8°C for up to 2 weeks. For long-term storage, store at -20°C in small aliquots to prevent freeze-thaw cycles.
Host	Rabbit
Uniprot ID	Q12792

Technical Details

Immunogen	This TWF1 antibody is generated from a rabbit immunized with a KLH conjugated synthetic peptide between 137-171 amino acids from the Central region of human TWF1.
Predicted Reactive Species	Bovine
Isotype	Rabbit IgG
Purification	This antibody is purified through a protein A column, followed by peptide affinity purification.
Suggested Dilutions	WB: 1:2000

Anti-TWF1 Antibody (Center) (M07004) Images



All lanes : Anti-TWF1 Antibody (Center) at 1:2000 dilution
Lane 1: NCI-H1299 whole cell lysate
Lane 2: HeLa whole cell lysate
Lysates/proteins at 20 µg per lane.
Secondary Goat Anti-Rabbit IgG, (H+L), Peroxidase conjugated at 1/10000 dilution. Predicted band size : 40 kDa
Blocking/Dilution buffer: 5% NFDN/TBST.

Submit a product review to Biocompare.com

Submit a review of this product to Biocompare.com to receive a \$20 Amazon.com giftcard! Your reviews help your fellow scientists make the right decisions. Thank you for your contribution.



Anti-TWF1 Antibody (Center)

For Research Use Only. Not for use in diagnostic procedures.