

Anti-IKB epsilon Rabbit Monoclonal Antibody

Catalog Number: M07073-3

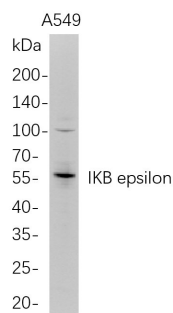
Overview

Product Name	Anti-IKB epsilon Rabbit Monoclonal Antibody
Reactive Species	Human
Description	This Recombinant Rabbit Monoclonal Antibody detects endogenous levels of IKB epsilon protein. Validated for research with WB, IHC, IF/ICC, IP applications. Anti IKB epsilon is reactive for Human samples
Application	IP, IF, IHC, ICC, WB
Clonality	Monoclonal
Formulation	PBS, 50% glycerol, 0.05% Proclin 300, 0.05% stabilizing protein This antibody is supplied in a stabilized formulation. Compatibility with conjugation reactions depends on the chemistry of the conjugation method used. For conjugation methods that are not compatible with the stabilizing components present in this formulation, a carrier-free antibody format is required.
Storage Instructions	Store at -20°C/1 year
Host	Rabbit
Uniprot ID	O00221

Technical Details

Isotype	IgG, Kappa
Purification	Protein A
Suggested Dilutions	WB 1:1000-1:5000 IHC 1:100-1:300 ICC/IF 1:100-1:300 IP 1:50-1:100

Anti-IKB epsilon Rabbit Monoclonal Antibody (M07073-3) Images



Western Blot analysis of A549 whole cell lysates were separated by 4-20% SDS-PAGE, and the membrane was blotted with anti-IKB epsilon rabbit mAb. The HRP-conjugated Goat anti-Rabbit IgG(H + L) antibody was used to detect the antibody.

Submit a product review to Biocompare.com

Submit a review of this product to Biocompare.com to receive a \$20 Amazon.com giftcard! Your reviews help your fellow scientists make the right decisions. Thank you for your contribution.



Anti-IKB epsilon Rabbit Monoclonal Antibody

For Research Use Only. Not for use in diagnostic procedures.