

## Anti-Integrin alpha E ITGAE Rabbit Monoclonal Antibody

Catalog Number: M07091

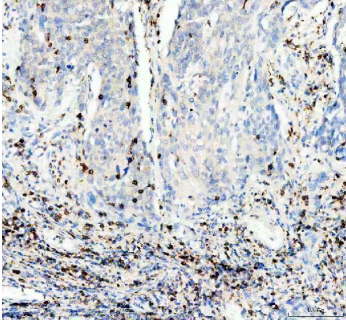
### Overview

Product Name	Anti-Integrin alpha E ITGAE Rabbit Monoclonal Antibody
Reactive Species	Human
Description	Boster Bio Anti-Integrin alpha E ITGAE Rabbit Monoclonal Antibody catalog # M07091. Tested in IHC application. This antibody reacts with Human.
Application	IHC
Clonality	Monoclonal AbI91
Formulation	Rabbit IgG in stabilizing components, phosphate buffered saline, pH 7.4, 150mM NaCl, 0.02% sodium azide and 50% glycerol. *This antibody is supplied in a stabilized formulation. Compatibility with conjugation reactions depends on the chemistry of the conjugation method used. For conjugation methods that are not compatible with the stabilizing components present in this formulation, a carrier-free antibody format is required.
Storage Instructions	Store at -20°C for one year. For short term storage and frequent use, store at 4°C for up to one month. Avoid repeated freeze-thaw cycles.
Host	Rabbit
Uniprot ID	P38570

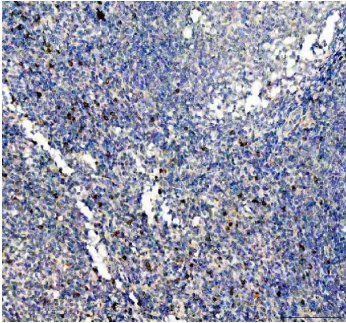
### Technical Details

Immunogen	A synthesized peptide derived from human Integrin alpha E
Isotype	Rabbit IgG
Form	Liquid
Concentration	0.5mg/ml
Purification	Affinity-chromatography
Suggested Dilutions	IHC 1:50-200

## Anti-Integrin alpha E ITGAE Rabbit Monoclonal Antibody (M07091) Images



IHC analysis of ITGAE using anti-ITGAE antibody (M07091). ITGAE was detected in a paraffin-embedded section of human cervical cancer tissue. Heat mediated antigen retrieval was performed in EDTA buffer (pH 8.0, epitope retrieval solution). The tissue section was blocked with 10% goat serum. The tissue section was then incubated with 1:100 rabbit anti-ITGAE Antibody (M07091) overnight at 4°C. Peroxidase Conjugated Goat Anti-rabbit IgG was used as secondary antibody and incubated for 30 minutes at 37°C. The tissue section was developed using HRP Conjugated Rabbit IgG Super Vision Assay Kit (Catalog # SV0002) with DAB as the chromogen.



IHC analysis of ITGAE using anti-ITGAE antibody (M07091). ITGAE was detected in a paraffin-embedded section of human tonsil tissue. Heat mediated antigen retrieval was performed in EDTA buffer (pH 8.0, epitope retrieval solution). The tissue section was blocked with 10% goat serum. The tissue section was then incubated with 1:100 rabbit anti-ITGAE Antibody (M07091) overnight at 4°C. Peroxidase Conjugated Goat Anti-rabbit IgG was used as secondary antibody and incubated for 30 minutes at 37°C. The tissue section was developed using HRP Conjugated Rabbit IgG Super Vision Assay Kit (Catalog # SV0002) with DAB as the chromogen.

### Submit a product review to [Biocompare.com](https://www.biocompare.com)

Submit a review of this product to [Biocompare.com](https://www.biocompare.com) to receive a \$20 Amazon.com giftcard! Your reviews help your fellow scientists make the right decisions. Thank you for your contribution.



Anti-Integrin alpha E ITGAE Rabbit Monoclonal Antibody

For Research Use Only. Not for use in diagnostic procedures.