

Anti-ABAT Mouse Monoclonal Antibody [Clone ID: OTI6C9]

Catalog Number: M07133-1

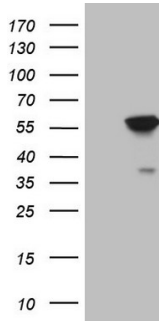
Overview

Product Name	Anti-ABAT Mouse Monoclonal Antibody [Clone ID: OTI6C9]
Reactive Species	Human, Mouse, Rat
Description	Boster Bio ABAT mouse monoclonal antibody, clone OTI6C9 (formerly 6C9). Catalog# M07133-1. Tested in IHC, WB. This antibody reacts with Human, Mouse, Rat.
Application	IHC, WB
Clonality	Monoclonal OTI6C9
Formulation	PBS (PH 7.3) containing 1% BSA, 50% glycerol and 0.02% sodium azide.
Storage Instructions	Store at -20°C as received.
Host	Mouse
Uniprot ID	P80404

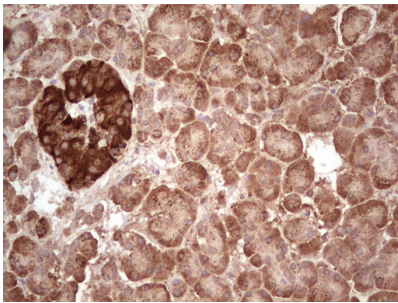
Technical Details

Immunogen	Human recombinant protein fragment corresponding to amino acids 29-323 of human ABAT (NP_065737) produced in E.coli.
Isotype	IgG1
Concentration	1 mg/ml
Purification	Purified from mouse ascites fluids or tissue culture supernatant by affinity chromatography (protein A/G)
Suggested Dilutions	Dilute the sample so that the expected range of concentrations fall within the detection range of this kit. If the expected range of concentration is unknown, a pilot test should be conducted to decide the optimal dilution ratio for your samples. Some PubMed article(s) citing the expression level of this target are as follows:

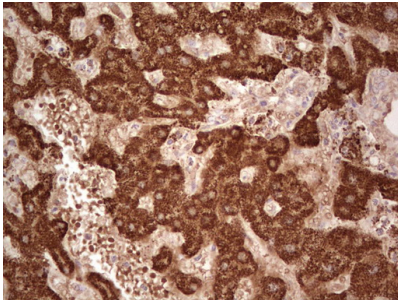
Anti-ABAT Mouse Monoclonal Antibody [Clone ID: OTI6C9] (M07133-1) Images



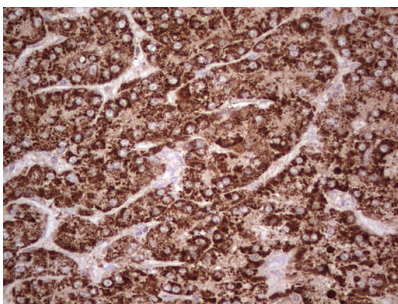
HEK293T cells were transfected with the pCMV6-ENTRY control (Left lane) or pCMV6-ENTRY ABAT (Right lane) cDNA for 48 hrs and lysed. Equivalent amounts of cell lysates (5 ug per lane) were separated by SDS-PAGE and immunoblotted with anti-ABAT.



Immunohistochemical staining of paraffin-embedded Human pancreas tissue within the normal limits using anti-ABAT mouse monoclonal antibody. (Heat-induced epitope retrieval by 1 mM EDTA in 10mM Tris)



Immunohistochemical staining of paraffin-embedded Human liver tissue within the normal limits using anti-ABAT mouse monoclonal antibody. (Heat-induced epitope retrieval by 1 mM EDTA in 10mM Tris)



Immunohistochemical staining of paraffin-embedded Carcinoma of Human liver tissue using anti-ABAT mouse monoclonal antibody. (Heat-induced epitope retrieval by 1 mM EDTA in 10mM Tris)

Submit a product review to Biocompare.com

Submit a review of this product to Biocompare.com to receive a \$20 Amazon.com giftcard! Your reviews help your fellow scientists make the right decisions. Thank you for your contribution.



Anti-ABAT Mouse Monoclonal Antibody [Clone ID: OTI6C9]