

Anti-SERPINB6 Mouse Monoclonal Antibody [Clone ID: OTI1C5]

Catalog Number: M07155

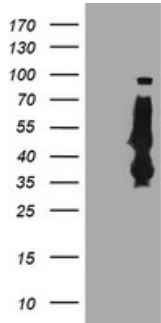
Overview

Product Name	Anti-SERPINB6 Mouse Monoclonal Antibody [Clone ID: OTI1C5]
Reactive Species	Human, Monkey, Mouse
Description	Boster Bio SERPINB6 mouse monoclonal antibody, clone OTI1C5 (formerly 1C5). Catalog# M07155. Tested in FC, IHC, WB. This antibody reacts with Human, Monkey, Mouse.
Application	Flow Cytometry, IHC, WB
Clonality	Monoclonal OTI1C5
Formulation	PBS (pH 7.3) containing 1% stabilizing protein, 50% glycerol and 0.02% sodium azide. This antibody is supplied in a stabilized formulation. Compatibility with conjugation reactions depends on the chemistry of the conjugation method used. For conjugation methods that are not compatible with the stabilizing components present in this formulation, a carrier-free antibody format is required.
Storage Instructions	Store at -20°C as received.
Host	Mouse
Uniprot ID	P35237

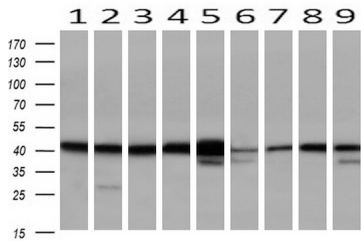
Technical Details

Immunogen	Full length human recombinant protein of human SERPINB6 (NP_004559) produced in HEK293T cell.
Isotype	IgG2a
Concentration	0.71 mg/ml
Purification	Purified from mouse ascites fluids or tissue culture supernatant by affinity chromatography (protein A/G)
Suggested Dilutions	WB 1:500~2000 IHC 1:150 Flow Cytometry 1:100

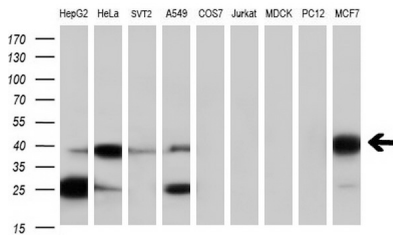
Anti-SERPINB6 Mouse Monoclonal Antibody [Clone ID: OTI1C5] (M07155) Images



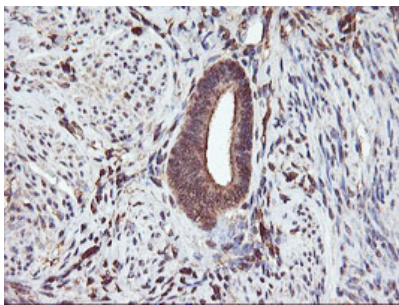
HEK293T cells were transfected with the pCMV6-ENTRY control (Left lane) or pCMV6-ENTRY SERPINB6 (Right lane) cDNA for 48 hrs and lysed. Equivalent amounts of cell lysates (5 ug per lane) were separated by SDS-PAGE and immunoblotted with anti-SERPINB6.



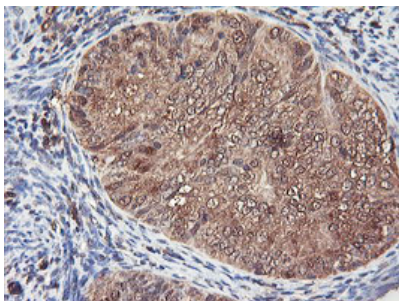
Western blot analysis of extracts (10ug) from 9 Human tissue by using anti-SERPINB6 monoclonal antibody at 1:200 (1: Testis; 2: Omentum; 3: Uterus; 4: Breast; 5: Brain; 6: Liver; 7: Ovary; 8: Thyroid gland; 9: colon).



Western blot analysis of extracts (35ug) from 9 different cell lines by using anti-SERPINB6 monoclonal antibody.

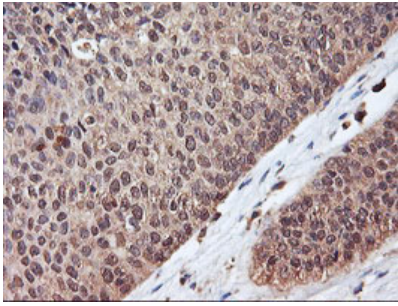


Immunohistochemical staining of paraffin-embedded Human endometrium tissue within the normal limits using anti-SERPINB6 mouse monoclonal antibody. (Heat-induced epitope retrieval by 10mM citric buffer)

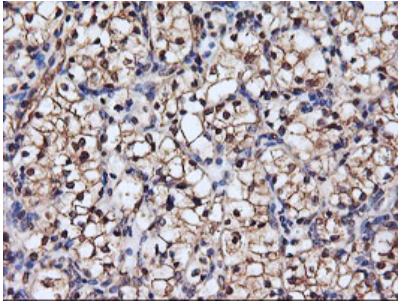


Immunohistochemical staining of paraffin-embedded Adenocarcinoma of Human endometrium tissue using anti-SERPINB6 mouse monoclonal antibody. (Heat-induced epitope retrieval by 10mM citric buffer)

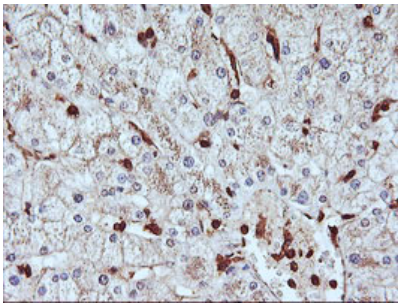
Immunohistochemical staining of paraffin-embedded



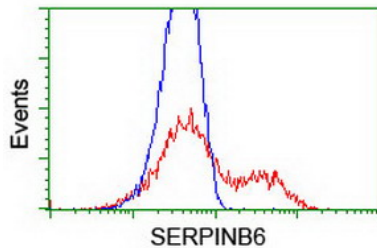
Carcinoma of Human bladder tissue using anti-SERPINB6 mouse monoclonal antibody. (Heat-induced epitope retrieval by 10mM citric buffer)



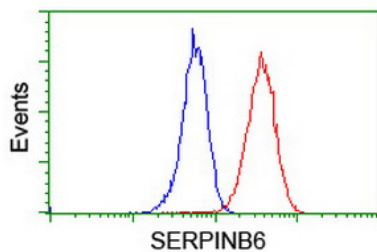
Immunohistochemical staining of paraffin-embedded Carcinoma of Human kidney tissue using anti-SERPINB6 mouse monoclonal antibody. (Heat-induced epitope retrieval by 10mM citric buffer)



Immunohistochemical staining of paraffin-embedded Human liver tissue within the normal limits using anti-SERPINB6 mouse monoclonal antibody. (Heat-induced epitope retrieval by 10mM citric buffer)



HEK293T cells transfected with either SERPINB6 (Myc-DDK-tagged) overexpress plasmid (Red) or empty vector control plasmid (Blue) were immunostained by anti-SERPINB6 antibody (M07155)



Flow cytometric Analysis of Jurkat cells

Submit a product review to Biocompare.com

Submit a review of this product to Biocompare.com to receive a \$20 Amazon.com giftcard! Your reviews help your fellow scientists make the right decisions. Thank you for your contribution.



Anti-SERPINB6 Mouse Monoclonal Antibody [Clone ID: OT11C5]

For Research Use Only. Not for use in diagnostic procedures.