

Anti-SERPINB6 Mouse Monoclonal Antibody [Clone ID: OTI3H3]

Catalog Number: M07155-1

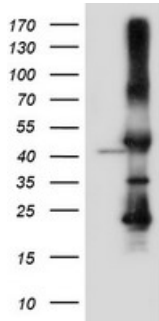
Overview

Product Name	Anti-SERPINB6 Mouse Monoclonal Antibody [Clone ID: OTI3H3]
Reactive Species	Human, Monkey, Mouse
Description	Boster Bio SERPINB6 mouse monoclonal antibody, clone OTI3H3 (formerly 3H3). Catalog# M07155-1. Tested in FC, IF, WB. This antibody reacts with Human, Monkey, Mouse.
Application	Flow Cytometry, IF, WB
Clonality	Monoclonal OTI3H3
Formulation	PBS (pH 7.3) containing 1% stabilizing protein, 50% glycerol and 0.02% sodium azide. This antibody is supplied in a stabilized formulation. Compatibility with conjugation reactions depends on the chemistry of the conjugation method used. For conjugation methods that are not compatible with the stabilizing components present in this formulation, a carrier-free antibody format is required.
Storage Instructions	Store at -20°C as received.
Host	Mouse
Uniprot ID	P35237

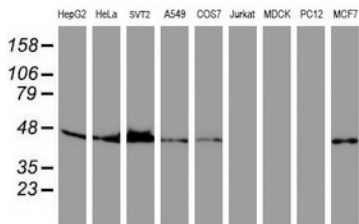
Technical Details

Immunogen	Full length human recombinant protein of human SERPINB6 (NP_004559) produced in HEK293T cell.
Isotype	IgG2a
Concentration	1.08 mg/ml
Purification	Purified from mouse ascites fluids or tissue culture supernatant by affinity chromatography (protein A/G)
Suggested Dilutions	WB 1:500~2000 IF 1:100 Flow Cytometry 1:100

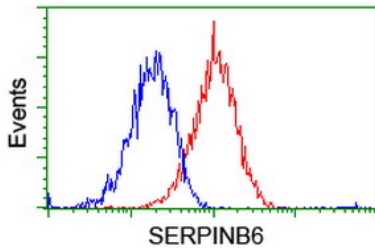
Anti-SERPINB6 Mouse Monoclonal Antibody [Clone ID: OTI3H3] (M07155-1) Images



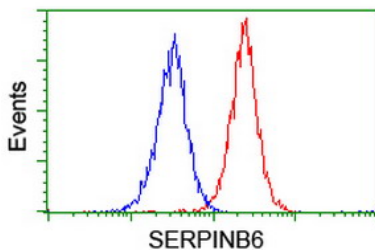
HEK293T cells were transfected with the pCMV6-ENTRY control (Left lane) or pCMV6-ENTRY SERPINB6 (Right lane) cDNA for 48 hrs and lysed. Equivalent amounts of cell lysates (5 ug per lane) were separated by SDS-PAGE and immunoblotted with anti-SERPINB6.



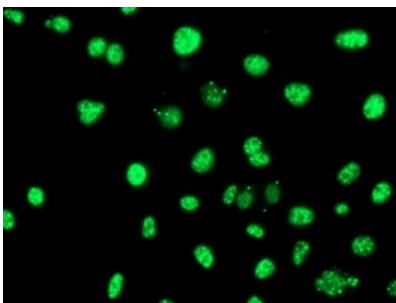
Western blot analysis of extracts (35ug) from 9 different cell lines by using anti-SERPINB6 monoclonal antibody.



Flow cytometric Analysis of HeLa cells



Flow cytometric Analysis of Jurkat cells



Anti-SERPINB6 mouse monoclonal antibody (M07155-1) immunofluorescent staining of COS7 cells transiently transfected by pCMV6-ENTRY SERPINB6.

Submit a review of this product to Biocompare.com to receive a \$20 Amazon.com giftcard! Your reviews help your fellow scientists make the right decisions. Thank you for your contribution.



Anti-SERPINB6 Mouse Monoclonal Antibody [Clone ID: OT13H3]

For Research Use Only. Not for use in diagnostic procedures.