

Anti-PSMC3 Mouse Monoclonal Antibody [Clone ID: OTI9F3]

Catalog Number: M07208

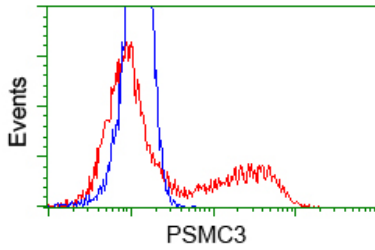
Overview

Product Name	Anti-PSMC3 Mouse Monoclonal Antibody [Clone ID: OTI9F3]
Reactive Species	Dog, Human, Mouse, Rat
Description	Boster Bio Anti-PSMC3 mouse monoclonal antibody, clone OTI9F3 (formerly 9F3). Catalog# M07208. Tested in FC, IF, IHC, WB. This antibody reacts with Human, Mouse, Rat, Dog.
Conjugate	Unconjugated
Application	Flow Cytometry, IF, IHC, WB
Clonality	Monoclonal OTI9F3
Formulation	PBS (pH 7.3) containing 1% stabilizing protein, 50% glycerol and 0.02% sodium azide. This antibody is supplied in a stabilized formulation. Compatibility with conjugation reactions depends on the chemistry of the conjugation method used. For conjugation methods that are not compatible with the stabilizing components present in this formulation, a carrier-free antibody format is required.
Storage Instructions	Store at -20°C as received.
Host	Mouse
Uniprot ID	P17980

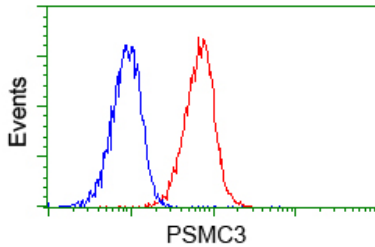
Technical Details

Immunogen	Full length human recombinant protein of human PSMC3 (NP_002795) produced in HEK293T cell.
Isotype	IgG1
Concentration	0.58 mg/ml
Purification	Purified from mouse ascites fluids or tissue culture supernatant by affinity chromatography (protein A/G)
Suggested Dilutions	WB: 1:2000 IHC: 1:50 IF: 1:100 Flow cytometry: 1:100

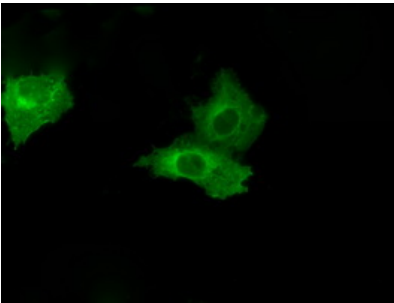
Anti-PSMC3 Mouse Monoclonal Antibody [Clone ID: OT19F3] (M07208) Images



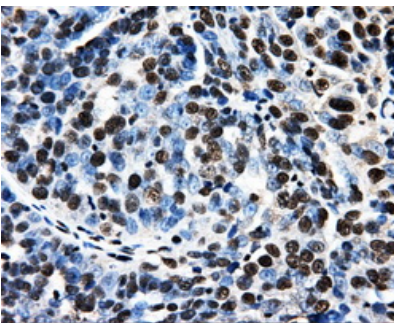
HEK293T cells transfected with either pCMV6-ENTRY PSMC3 (Red) or empty vector control plasmid (Blue) were immunostained with anti-PSMC3 mouse monoclonal (M07208)



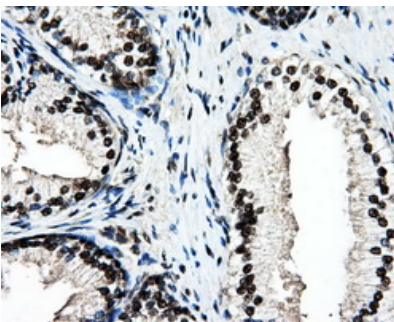
Flow cytometric analysis of Jurkat cells



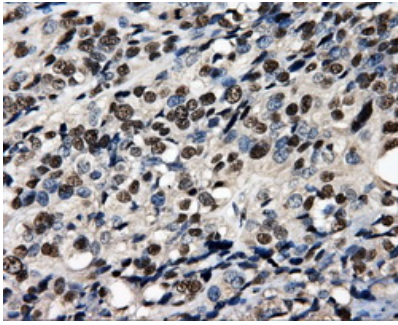
Anti-PSMC3 mouse monoclonal antibody (M07208) immunofluorescent staining of COS7 cells transiently transfected by pCMV6-ENTRY PSMC3.



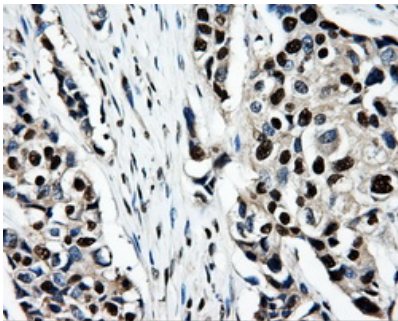
Immunohistochemical staining of paraffin-embedded Adenocarcinoma of ovary tissue using anti-PSMC3 mouse monoclonal antibody. (Heat-induced epitope retrieval by 10mM citric buffer)



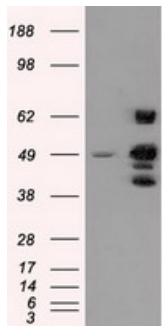
Immunohistochemical staining of paraffin-embedded prostate tissue within the normal limits using anti-PSMC3 mouse monoclonal antibody. (Heat-induced epitope retrieval by 10mM citric buffer)



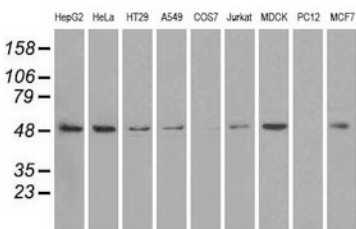
Immunohistochemical staining of paraffin-embedded Carcinoma of bladder tissue using anti-PSMC3 mouse monoclonal antibody. (Heat-induced epitope retrieval by 10mM citric buffer)



Immunohistochemical staining of paraffin-embedded Adenocarcinoma of breast tissue using anti-PSMC3 mouse monoclonal antibody. (Heat-induced epitope retrieval by 10mM citric buffer)



HEK293T cells were transfected with the pCMV6-ENTRY control (Left lane) or pCMV6-ENTRY PSMC3 (Right lane) cDNA for 48 hrs and lysed. Equivalent amounts of cell lysates (5 ug per lane) were separated by SDS-PAGE and immunoblotted with anti-PSMC3.



Western blot analysis of extracts (35ug) from 9 different cell lines by using anti-PSMC3 monoclonal antibody.

Submit a product review to [Biocompare.com](https://www.biocompare.com)

Submit a review of this product to [Biocompare.com](https://www.biocompare.com) to receive a \$20 Amazon.com giftcard! Your reviews help your fellow scientists make the right decisions. Thank you for your contribution.



Anti-PSMC3 Mouse Monoclonal Antibody [Clone ID: OT19F3]

For Research Use Only. Not for use in diagnostic procedures.