

Anti-RSL1D1 Antibody (C-Term)

Catalog Number: M07282

About RSL1D1

Regulates cellular senescence through inhibition of PTEN translation. Acts as a pro-apoptotic regulator in response to DNA damage.

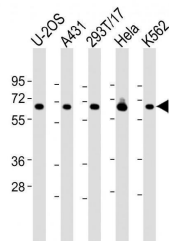
Overview

Product Name	Anti-RSL1D1 Antibody (C-Term)
Reactive Species	Human
Description	Boster Bio Anti-RSL1D1 Antibody (C-Term) (Catalog # M07282). Tested in WB application(s). This antibody reacts with Human.
Application	WB
Clonality	Polyclonal
Formulation	Purified polyclonal antibody supplied in PBS with 0.09% (W/V) sodium azide.
Storage Instructions	Maintain refrigerated at 2-8°C for up to 2 weeks. For long-term storage, store at -20°C in small aliquots to prevent freeze-thaw cycles.
Host	Rabbit
Uniprot ID	O76021

Technical Details

Immunogen	This RSL1D1 antibody is generated from a rabbit immunized with a KLH conjugated synthetic peptide between 455-485 amino acids from human RSL1D1.
Predicted Reactive Species	Bovine
Isotype	Rabbit IgG
Purification	This antibody is purified through a protein A column, followed by peptide affinity purification.
Suggested Dilutions	WB: 1:2000

Anti-RSL1D1 Antibody (C-Term) (M07282) Images



All lanes : Anti-RSL1D1 Antibody (C-Term) at 1:2000 dilution
Lane 1: U-2OS whole cell lysate
Lane 2: A431 whole cell lysate
Lane 3: 293T/17 whole cell lysate
Lane 4: HeLa whole cell lysate
Lane 5: K562 whole cell lysate
Lysates/proteins at 20 µg per lane. Secondary Goat Anti-Rabbit IgG, (H+L), Peroxidase conjugated at 1/10000 dilution. Predicted band size : 55 kDa
Blocking/Dilution buffer: 5% NFDM/TBST.

Submit a product review to Biocompare.com

Submit a review of this product to Biocompare.com to receive a \$20 Amazon.com giftcard! Your reviews help your fellow scientists make the right decisions. Thank you for your contribution.



Anti-RSL1D1 Antibody (C-Term)

For Research Use Only. Not for use in diagnostic procedures.