

## Anti-Nucleobindin 1 (NUCB1) Mouse Monoclonal Antibody [Clone ID: OT1A5]

Catalog Number: M07305

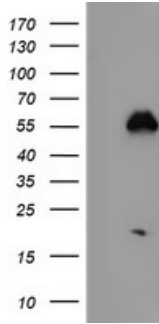
### Overview

Product Name	Anti-Nucleobindin 1 (NUCB1) Mouse Monoclonal Antibody [Clone ID: OT1A5]
Reactive Species	Human, Mouse, Rat
Description	Boster Bio NUCB1 (Nucleobindin 1) mouse monoclonal antibody, clone OT1A5 (formerly 1A5). Catalog# M07305. Tested in FC, IF, IHC, WB. This antibody reacts with Human, Mouse, Rat.
Application	Flow Cytometry, IF, IHC, WB
Clonality	Monoclonal OT1A5
Formulation	PBS (pH 7.3) containing 1% stabilizing protein, 50% glycerol and 0.02% sodium azide. This antibody is supplied in a stabilized formulation. Compatibility with conjugation reactions depends on the chemistry of the conjugation method used. For conjugation methods that are not compatible with the stabilizing components present in this formulation, a carrier-free antibody format is required.
Storage Instructions	Store at -20°C as received.
Host	Mouse
Uniprot ID	Q02818

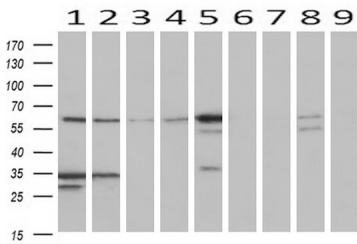
### Technical Details

Immunogen	Full length human recombinant protein of human NUCB1 (NP_006175) produced in HEK293T cell.
Isotype	IgG1
Concentration	0.93 mg/ml
Purification	Purified from mouse ascites fluids or tissue culture supernatant by affinity chromatography (protein A/G)
Suggested Dilutions	WB 1:2000 IHC 1:150 IF 1:100 Flow Cytometry 1:100

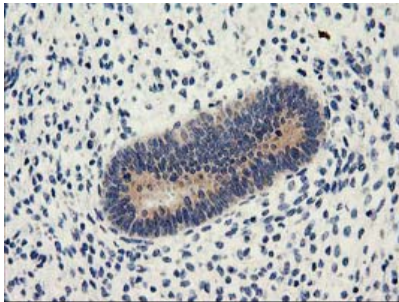
## Anti-Nucleobindin 1 (NUCB1) Mouse Monoclonal Antibody [Clone ID: OTI1A5] (M07305) Images



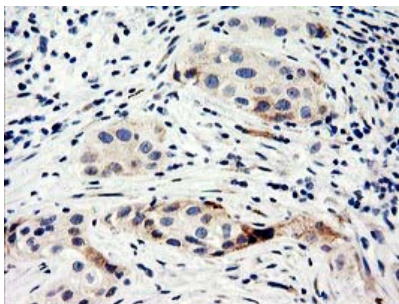
HEK293T cells were transfected with the pCMV6-ENTRY control (Left lane) or pCMV6-ENTRY NUCB1 (Right lane) cDNA for 48 hrs and lysed. Equivalent amounts of cell lysates (5 ug per lane) were separated by SDS-PAGE and immunoblotted with anti-NUCB1.



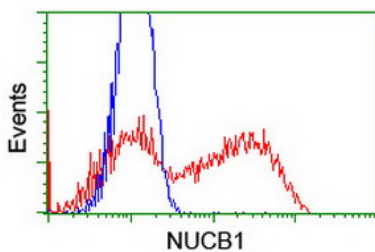
Western blot analysis of extracts (10ug) from 9 Human tissue by using anti-NUCB1 monoclonal antibody at 1:200 (1: Testis; 2: Omentum; 3: Uterus; 4: Breast; 5: Brain; 6: Liver; 7: Ovary; 8: Thyroid gland; 9: colon).



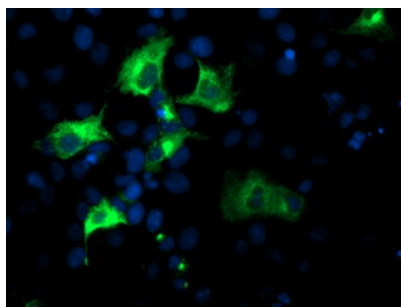
Immunohistochemical staining of paraffin-embedded Human endometrium tissue within the normal limits using anti-NUCB1 mouse monoclonal antibody. (Heat-induced epitope retrieval by 10mM citric buffer)



Immunohistochemical staining of paraffin-embedded Carcinoma of Human bladder tissue using anti-NUCB1 mouse monoclonal antibody. (Heat-induced epitope retrieval by 10mM citric buffer)



HEK293T cells transfected with either NUCB1 (Myc-DDK-tagged) overexpress plasmid (Red) or empty vector control plasmid (Blue) were immunostained by anti-NUCB1 antibody (M07305)



Anti-NUCB1 mouse monoclonal antibody (M07305)  
immunofluorescent staining of COS7 cells transiently  
transfected by pCMV6-ENTRY NUCB1.

### Submit a product review to [Biocompare.com](https://www.biocompare.com)

Submit a review of this product to [Biocompare.com](https://www.biocompare.com) to receive a \$20 Amazon.com giftcard! Your reviews help your fellow scientists make the right decisions. Thank you for your contribution.



Anti-Nucleobindin 1 (NUCB1) Mouse Monoclonal Antibody [Clone ID: OT11A5]

For Research Use Only. Not for use in diagnostic procedures.