

Anti-MADM (NRBP1) Mouse Monoclonal Antibody [Clone ID: OTI5C3]

Catalog Number: M07309

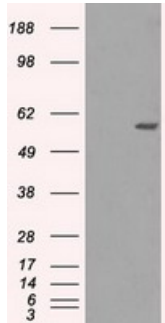
Overview

Product Name	Anti-MADM (NRBP1) Mouse Monoclonal Antibody [Clone ID: OTI5C3]
Reactive Species	Human, Monkey, Mouse, Rat
Description	Boster Bio Anti-NRBP1 (MADM) mouse monoclonal antibody, clone OTI5C3 (formerly 5C3). Catalog# M07309. Tested in FC, IF, IHC, IP, WB. This antibody reacts with Human, Monkey, Mouse, Rat.
Application	Flow Cytometry, IP, IF, IHC, WB
Clonality	Monoclonal OTI5C3
Formulation	PBS (pH 7.3) containing 1% BSA, 50% glycerol and 0.02% sodium azide.
Storage Instructions	Store at -20°C as received.
Host	Mouse
Uniprot ID	Q9UHY1

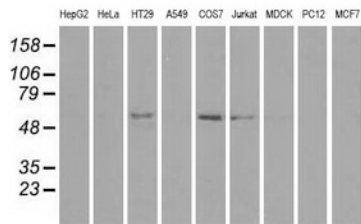
Technical Details

Immunogen	Full-length protein expressed in 293T cell transfected with human NRBP1 expression vector
Isotype	IgG2b
Concentration	1.48 mg/ml
Purification	Purified from mouse ascites fluids or tissue culture supernatant by affinity chromatography (protein A/G)
Suggested Dilutions	Dilute the sample so that the expected range of concentrations fall within the detection range of this kit. If the expected range of concentration is unknown, a pilot test should be conducted to decide the optimal dilution ratio for your samples. Some PubMed article(s) citing the expression level of this target are as follows:

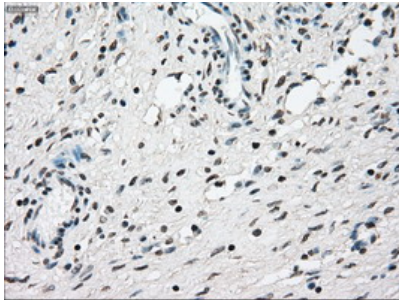
Anti-MADM (NRBP1) Mouse Monoclonal Antibody [Clone ID: OTI5C3] (M07309) Images



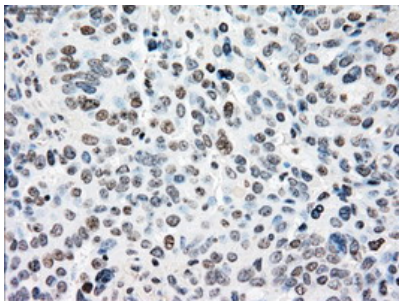
HEK293T cells were transfected with the pCMV6-ENTRY control (Left lane) or pCMV6-ENTRY NRBP1 (Right lane) cDNA for 48 hrs and lysed. Equivalent amounts of cell lysates (5 ug per lane) were separated by SDS-PAGE and immunoblotted with anti-NRBP1.



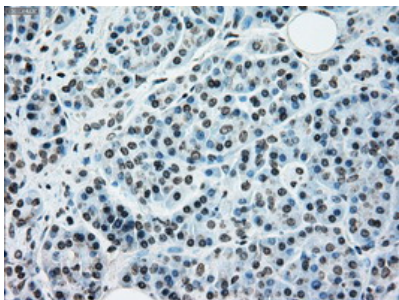
Western blot analysis of extracts (35ug) from 9 different cell lines by using anti-NRBP1 monoclonal antibody.



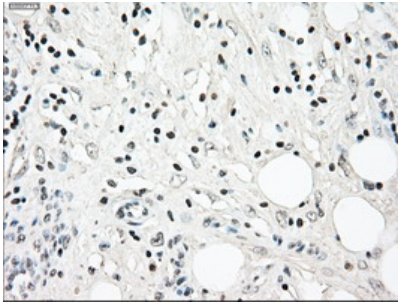
Immunohistochemical staining of paraffin-embedded Human Ovary tissue within the normal limits using anti-NRBP1 mouse monoclonal antibody. (Heat-induced epitope retrieval by 10mM citric buffer)



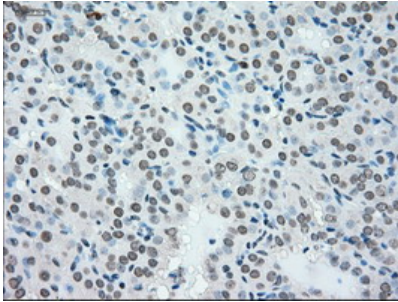
Immunohistochemical staining of paraffin-embedded Adenocarcinoma of Human ovary tissue using anti-NRBP1 mouse monoclonal antibody. (Heat-induced epitope retrieval by 10mM citric buffer)



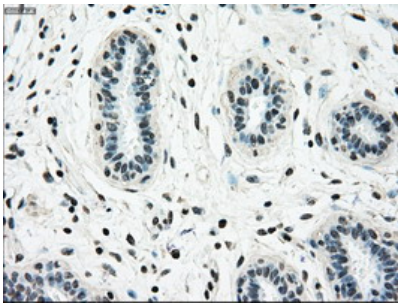
Immunohistochemical staining of paraffin-embedded Human pancreas tissue within the normal limits using anti-NRBP1 mouse monoclonal antibody. (Heat-induced epitope retrieval by 10mM citric buffer)



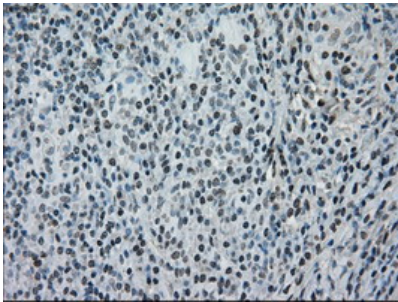
Immunohistochemical staining of paraffin-embedded Carcinoma of Human pancreas tissue using anti-NRBP1 mouse monoclonal antibody. (Heat-induced epitope retrieval by 10mM citric buffer)



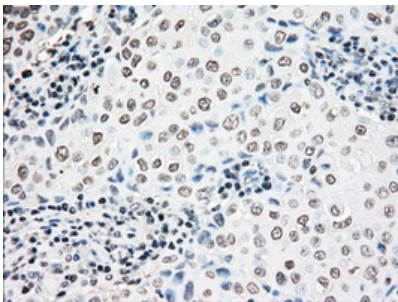
Immunohistochemical staining of paraffin-embedded Carcinoma of Human thyroid tissue using anti-NRBP1 mouse monoclonal antibody. (Heat-induced epitope retrieval by 10mM citric buffer)



Immunohistochemical staining of paraffin-embedded Human breast tissue within the normal limits using anti-NRBP1 mouse monoclonal antibody. (Heat-induced epitope retrieval by 10mM citric buffer)

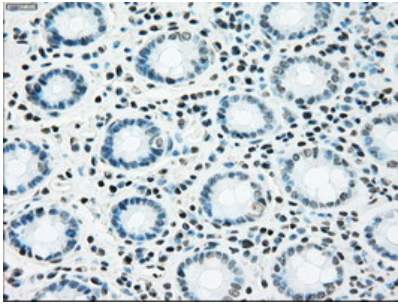


Immunohistochemical staining of paraffin-embedded Human lymphoma tissue using anti-NRBP1 mouse monoclonal antibody. (Heat-induced epitope retrieval by 10mM citric buffer)

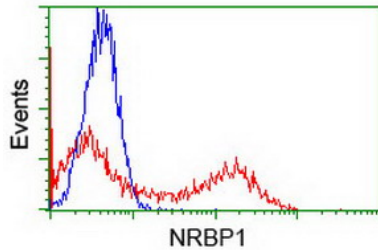


Immunohistochemical staining of paraffin-embedded Adenocarcinoma of Human breast tissue using anti-NRBP1 mouse monoclonal antibody. (Heat-induced epitope retrieval by 10mM citric buffer)

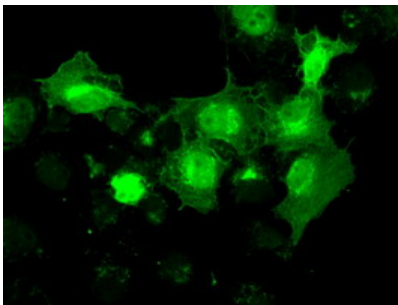
Immunohistochemical staining of paraffin-embedded Human colon tissue within the normal limits using anti-NRBP1 mouse monoclonal antibody. (Heat-induced epitope retrieval



by 10mM citric buffer



HEK293T cells transfected with either NRBP1 (Myc-DDK-tagged) overexpress plasmid (Red) or empty vector control plasmid (Blue) were immunostained by anti-NRBP1 antibody (M07309)



Anti-NRBP1 mouse monoclonal antibody (M07309) immunofluorescent staining of COS7 cells transiently transfected by pCMV6-ENTRY NRBP1.

Submit a product review to Biocompare.com

Submit a review of this product to Biocompare.com to receive a \$20 Amazon.com giftcard! Your reviews help your fellow scientists make the right decisions. Thank you for your contribution.



Anti-MADM (NRBP1) Mouse Monoclonal Antibody [Clone ID: OTI5C3]