

## Anti-CLEC4C Reference Antibody (LFB patent anti-BDCA-2)

Catalog Number: M07313-1

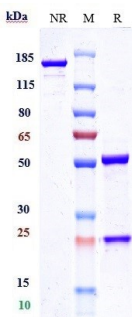
### Overview

|                      |   |
|----------------------|---|
| Product Name         | Anti-CLEC4C Reference Antibody (LFB patent anti-BDCA-2)   |
| Reactive Species     | Human   |
| Description          | Boster Bio Anti-CLEC4C Reference Antibody (LFB patent anti-BDCA-2) (Catalog # M07313-1). Tested in Flow Cytometry, ELISA, FTA. This antibody reacts with Human. Endotoxin: < 0.920EU/ug,determined by LAL method. Expression system: CHO Cell |
| Application          | ELISA, Flow Cytometry, Functional Assay, Kinetics   |
| Clonality            | Monoclonal  |
| Formulation          | Purified monoclonal antibody supplied in PBS, pH6.0, without preservative.This antibody is purified through a protein A column.   |
| Storage Instructions | Maintain refrigerated at 2-8°C for up to 2 weeks. For long-term storage, aliquot and store at -20°C to avoid repeated freeze-thaw cycles.   |
| Uniprot ID           | Q8WTT0  |

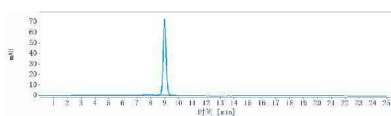
### Technical Details

|         |        |
|---------|--------|
| Isotype | IgG    |
| Form    | Liquid |

## Anti-CLEC4C Reference Antibody (LFB patent anti-BDCA-2) (M07313-1) Images



Anti-CLEC4C Reference Antibody (LFB patent anti-BDCA-2) on SDS-PAGE under reducing (R) condition. The gel was stained with Coomassie Blue. The purity of the protein is greater than 90%



The purity of Anti-CLEC4C Reference Antibody (LFB patent anti-BDCA-2) is more than 95%

### Submit a product review to [Biocompare.com](https://www.biocompare.com)

Submit a review of this product to [Biocompare.com](https://www.biocompare.com) to receive a \$20 Amazon.com giftcard! Your reviews help your fellow scientists make the right decisions. Thank you for your contribution.



Anti-CLEC4C Reference Antibody (LFB patent anti-BDCA-2)

For Research Use Only. Not for use in diagnostic procedures.