

Anti-CBR4 Mouse Monoclonal Antibody [Clone ID: OTI3C10]

Catalog Number: M07359

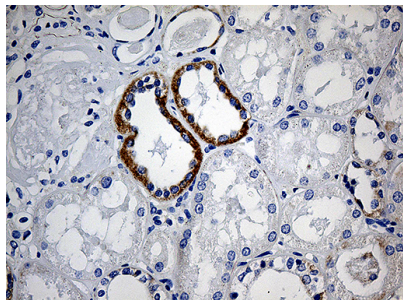
Overview

Product Name	Anti-CBR4 Mouse Monoclonal Antibody [Clone ID: OTI3C10]
Reactive Species	Human, Mouse, Rat
Description	Boster Bio CBR4 mouse monoclonal antibody, clone OTI3C10. Catalog# M07359. Tested in IHC. This antibody reacts with Human, Mouse, Rat.
Application	IHC
Clonality	Monoclonal OTI3C10
Formulation	PBS (pH 7.3) containing 1% stabilizing protein, 50% glycerol and 0.02% sodium azide. This antibody is supplied in a stabilized formulation. Compatibility with conjugation reactions depends on the chemistry of the conjugation method used. For conjugation methods that are not compatible with the stabilizing components present in this formulation, a carrier-free antibody format is required.
Storage Instructions	Store at -20°C as received.
Host	Mouse
Uniprot ID	Q8N4T8

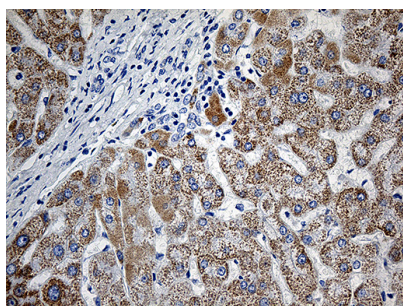
Technical Details

Immunogen	Full length human recombinant protein of human CBR4 (NP_116172) produced in E.coli.
Isotype	IgG1
Concentration	1 mg/ml
Purification	Purified from mouse ascites fluids or tissue culture supernatant by affinity chromatography (protein A/G)
Suggested Dilutions	IHC 1:150

Anti-CBR4 Mouse Monoclonal Antibody [Clone ID: OTI3C10] (M07359) Images



Immunohistochemical staining of paraffin-embedded Human Kidney tissue within the normal limits using anti-CBR4 mouse monoclonal antibody. (Heat-induced epitope retrieval by 1mM EDTA in 10mM Tris buffer (pH8.5) at 120°C for 3min)



Immunohistochemical staining of paraffin-embedded Human liver tissue within the normal limits using anti-CBR4 mouse monoclonal antibody. (Heat-induced epitope retrieval by 1mM EDTA in 10mM Tris buffer (pH8.5) at 120°C for 3min)

Submit a product review to [Biocompare.com](https://www.biocompare.com)

Submit a review of this product to [Biocompare.com](https://www.biocompare.com) to receive a \$20 Amazon.com giftcard! Your reviews help your fellow scientists make the right decisions. Thank you for your contribution.



Anti-CBR4 Mouse Monoclonal Antibody [Clone ID: OTI3C10]

For Research Use Only. Not for use in diagnostic procedures.