

Anti-SSX1 Mouse Monoclonal Antibody [Clone ID: OTI2F8]

Catalog Number: M07363

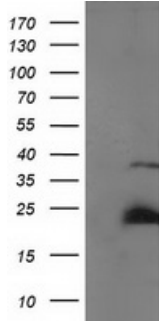
Overview

Product Name	Anti-SSX1 Mouse Monoclonal Antibody [Clone ID: OTI2F8]
Reactive Species	Human
Description	Boster Bio SSX1 mouse monoclonal antibody, clone OTI2F8 (formerly 2F8). Catalog# M07363. Tested in FC, IF, IHC, WB. This antibody reacts with Human.
Application	Flow Cytometry, IF, IHC, WB
Clonality	Monoclonal OTI2F8
Formulation	PBS (pH 7.3) containing 1% stabilizing protein, 50% glycerol and 0.02% sodium azide. This antibody is supplied in a stabilized formulation. Compatibility with conjugation reactions depends on the chemistry of the conjugation method used. For conjugation methods that are not compatible with the stabilizing components present in this formulation, a carrier-free antibody format is required.
Storage Instructions	Store at -20°C as received.
Host	Mouse
Uniprot ID	Q16384

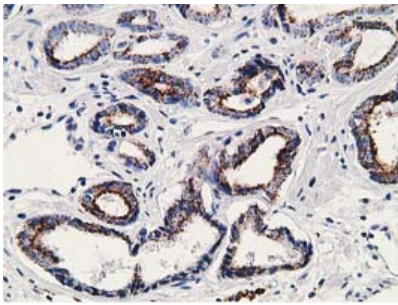
Technical Details

Immunogen	Full length human recombinant protein of human SSX1 (NP_005626) produced in E.coli.
Isotype	IgG1
Concentration	1 mg/ml
Purification	Purified from mouse ascites fluids or tissue culture supernatant by affinity chromatography (protein A/G)
Suggested Dilutions	WB 1:2000 IHC 1:150 IF 1:100 Flow Cytometry 1:100

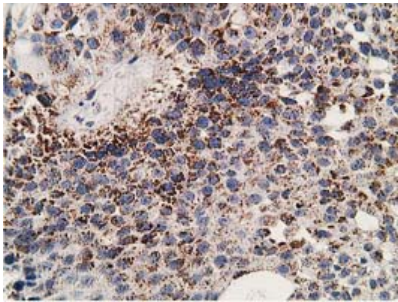
Anti-SSX1 Mouse Monoclonal Antibody [Clone ID: OTI2F8] (M07363) Images



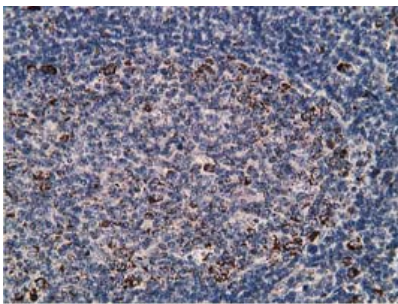
HEK293T cells were transfected with the pCMV6-ENTRY control (Left lane) or pCMV6-ENTRY SSX1 (Right lane) cDNA for 48 hrs and lysed. Equivalent amounts of cell lysates (5 ug per lane) were separated by SDS-PAGE and immunoblotted with anti-SSX1.



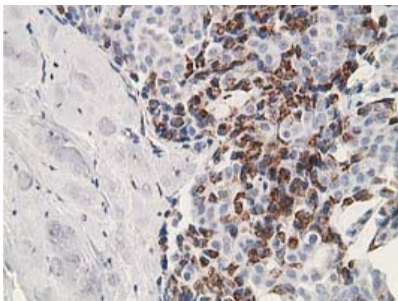
Immunohistochemical staining of paraffin-embedded Carcinoma of Human prostate tissue using anti-SSX1 mouse monoclonal antibody. (Heat-induced epitope retrieval by 10mM citric buffer)



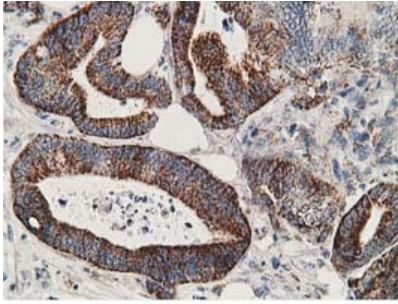
Immunohistochemical staining of paraffin-embedded Carcinoma of Human bladder tissue using anti-SSX1 mouse monoclonal antibody. (Heat-induced epitope retrieval by 10mM citric buffer)



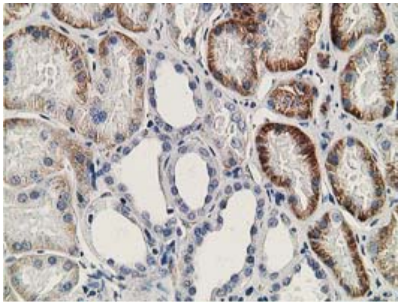
Immunohistochemical staining of paraffin-embedded Human lymph node tissue within the normal limits using anti-SSX1 mouse monoclonal antibody. (Heat-induced epitope retrieval by 10mM citric buffer)



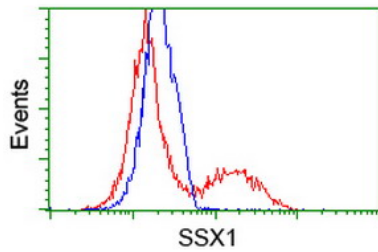
Immunohistochemical staining of paraffin-embedded Adenocarcinoma of Human breast tissue using anti-SSX1 mouse monoclonal antibody. (Heat-induced epitope retrieval by 10mM citric buffer)



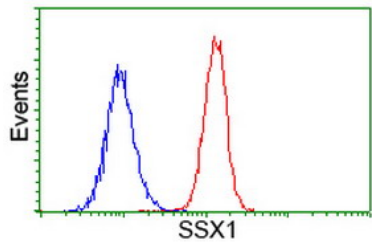
Immunohistochemical staining of paraffin-embedded Adenocarcinoma of Human colon tissue using anti-SSX1 mouse monoclonal antibody. (Heat-induced epitope retrieval by 10mM citric buffer)



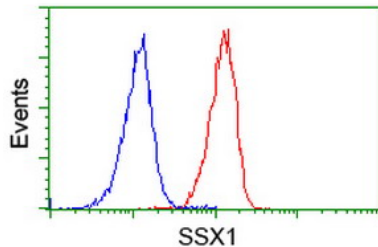
Immunohistochemical staining of paraffin-embedded Human Kidney tissue within the normal limits using anti-SSX1 mouse monoclonal antibody. (Heat-induced epitope retrieval by 10mM citric buffer)



HEK293T cells transfected with either SSX1 (Myc-DDK-tagged) overexpress plasmid (Red) or empty vector control plasmid (Blue) were immunostained by anti-SSX1 antibody (M07363)

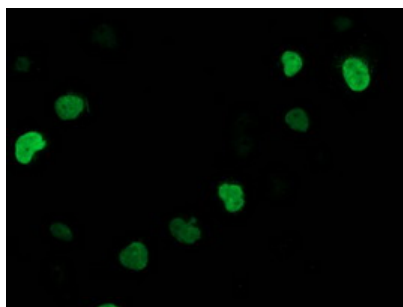


Flow cytometric Analysis of Hela cells



Flow cytometric Analysis of Jurkat cells

Anti-SSX1 mouse monoclonal antibody (M07363) immunofluorescent staining of COS7 cells transiently transfected by pCMV6-ENTRY SSX1.



Submit a product review to Biocompare.com

Submit a review of this product to Biocompare.com to receive a \$20 Amazon.com giftcard! Your reviews help your fellow scientists make the right decisions. Thank you for your contribution.



Anti-SSX1 Mouse Monoclonal Antibody [Clone ID: OT12F8]

For Research Use Only. Not for use in diagnostic procedures.