

## Anti-CTDSP1 Mouse Monoclonal Antibody [Clone ID: OTI1D3]

Catalog Number: M07398-1

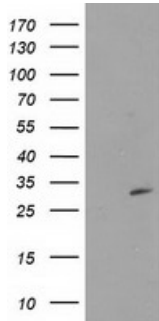
### Overview

Product Name	Anti-CTDSP1 Mouse Monoclonal Antibody [Clone ID: OTI1D3]
Reactive Species	Dog, Human, Monkey, Mouse, Rat
Description	Boster Bio CTDSP1 mouse monoclonal antibody, clone OTI1D3 (formerly 1D3). Catalog# M07398-1. Tested in IF, WB. This antibody reacts with Human, Monkey, Mouse, Rat, Dog.
Application	IF, WB
Clonality	Monoclonal OTI1D3
Formulation	PBS (pH 7.3) containing 1% stabilizing protein, 50% glycerol and 0.02% sodium azide. This antibody is supplied in a stabilized formulation. Compatibility with conjugation reactions depends on the chemistry of the conjugation method used. For conjugation methods that are not compatible with the stabilizing components present in this formulation, a carrier-free antibody format is required.
Storage Instructions	Store at -20°C as received.
Host	Mouse
Uniprot ID	Q9GZU7

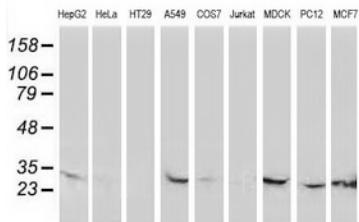
### Technical Details

Immunogen	Full length human recombinant protein of human CTDSP1 (NP_067021) produced in E.coli.
Isotype	IgG1
Concentration	0.7 mg/ml
Purification	Purified from mouse ascites fluids or tissue culture supernatant by affinity chromatography (protein A/G)
Suggested Dilutions	WB 1:200~500 IF 1:100

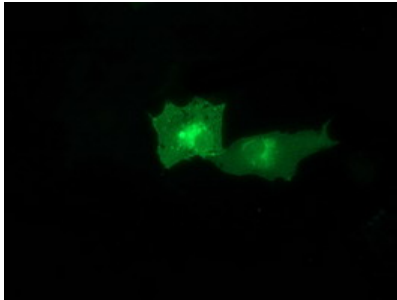
## Anti-CTDSP1 Mouse Monoclonal Antibody [Clone ID: OTI1D3] (M07398-1) Images



HEK293T cells were transfected with the pCMV6-ENTRY control (Left lane) or pCMV6-ENTRY CTDSP1 (Right lane) cDNA for 48 hrs and lysed. Equivalent amounts of cell lysates (5 ug per lane) were separated by SDS-PAGE and immunoblotted with anti-CTDSP1.



Western blot analysis of extracts (35ug) from 9 different cell lines by using anti-CTDSP1 monoclonal antibody.



Anti-CTDSP1 mouse monoclonal antibody (M07398-1) immunofluorescent staining of COS7 cells transiently transfected by pCMV6-ENTRY CTDSP1.

### Submit a product review to [Biocompare.com](https://www.biocompare.com)

Submit a review of this product to [Biocompare.com](https://www.biocompare.com) to receive a \$20 Amazon.com giftcard! Your reviews help your fellow scientists make the right decisions. Thank you for your contribution.



Anti-CTDSP1 Mouse Monoclonal Antibody [Clone ID: OTI1D3]

For Research Use Only. Not for use in diagnostic procedures.