

Anti-TXNDC (TMX1) Mouse Monoclonal Antibody [Clone ID: OTI3H5]

Catalog Number: M07462

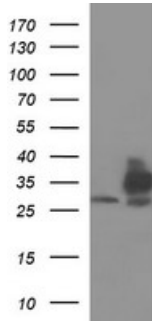
Overview

Product Name	Anti-TXNDC (TMX1) Mouse Monoclonal Antibody [Clone ID: OTI3H5]
Reactive Species	Human
Description	Boster Bio TMX1 mouse monoclonal antibody, clone OTI3H5 (formerly 3H5). Catalog# M07462. Tested in IF, IHC, WB. This antibody reacts with Human.
Application	IF, IHC, WB
Clonality	Monoclonal OTI3H5
Formulation	PBS (pH 7.3) containing 1% stabilizing protein, 50% glycerol and 0.02% sodium azide. This antibody is supplied in a stabilized formulation. Compatibility with conjugation reactions depends on the chemistry of the conjugation method used. For conjugation methods that are not compatible with the stabilizing components present in this formulation, a carrier-free antibody format is required.
Storage Instructions	Store at -20°C as received.
Host	Mouse
Uniprot ID	Q9H3N1

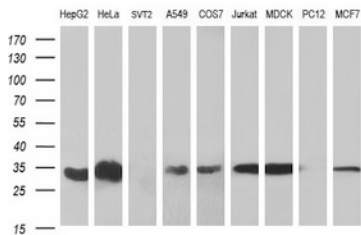
Technical Details

Immunogen	Full length human recombinant protein of human TMX1 (NP_110382) produced in HEK293T cell.
Isotype	IgG1
Concentration	1 mg/ml
Purification	Purified from mouse ascites fluids or tissue culture supernatant by affinity chromatography (protein A/G)
Suggested Dilutions	WB 1:2000 IHC 1:150 IF 1:100

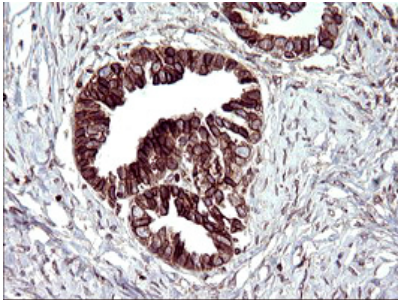
Anti-TXNDC (TMX1) Mouse Monoclonal Antibody [Clone ID: OTI3H5] (M07462) Images



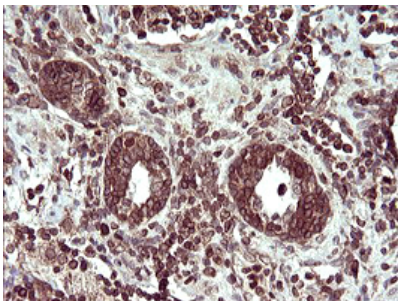
HEK293T cells were transfected with the pCMV6-ENTRY control (Left lane) or pCMV6-ENTRY TMX1 (Right lane) cDNA for 48 hrs and lysed. Equivalent amounts of cell lysates (5 ug per lane) were separated by SDS-PAGE and immunoblotted with anti-TMX1.



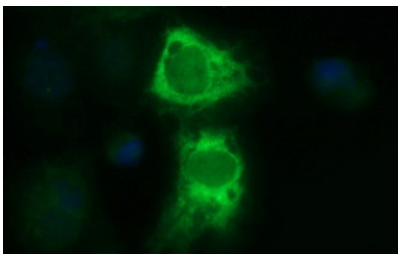
Western blot analysis of extracts (35ug) from 9 different cell lines by using anti-TMX1 monoclonal antibody (HepG2: human; HeLa: human; SVT2: mouse; A549: human; COS7: monkey; Jurkat: human; MDCK: canine; PC12: rat; MCF7: human). Dilution: 1:400



Immunohistochemical staining of paraffin-embedded Adenocarcinoma of Human ovary tissue using anti-TMX1 mouse monoclonal antibody. (Heat-induced epitope retrieval by 10mM citric buffer)



Immunohistochemical staining of paraffin-embedded Carcinoma of Human prostate tissue using anti-TMX1 mouse monoclonal antibody. (Heat-induced epitope retrieval by 10mM citric buffer)



Anti-TMX1 mouse monoclonal antibody (M07462) immunofluorescent staining of COS7 cells transiently transfected by pCMV6-ENTRY TMX1.

Submit a review of this product to Biocompare.com to receive a \$20 Amazon.com giftcard! Your reviews help your fellow scientists make the right decisions. Thank you for your contribution.



Anti-TXNDC (TMX1) Mouse Monoclonal Antibody [Clone ID: OT13H5]

For Research Use Only. Not for use in diagnostic procedures.