

## Anti-Mouse IgM Ighm Rabbit Monoclonal Antibody, Clone#RM109

Catalog Number: M07469-2

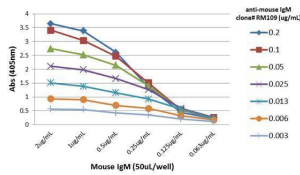
### Overview

Product Name	Anti-Mouse IgM Ighm Rabbit Monoclonal Antibody, Clone#RM109
Reactive Species	Mouse
Description	Boster Bio Anti-Mouse IgM Ighm Rabbit Monoclonal Antibody, Clone#RM109 (Catalog # M07469-2). Tested in ELISA applications. This antibody reacts with Mouse.
Application	ELISA
Clonality	Monoclonal RM109
Formulation	50% Glycerol/PBS with 1% stabilizing protein and 0.09% sodium azide This antibody is supplied in a stabilized formulation. Compatibility with conjugation reactions depends on the chemistry of the conjugation method used. For conjugation methods that are not compatible with the stabilizing components present in this formulation, a carrier-free antibody format is required.
Storage Instructions	Store at -20°C for one year. Avoid repeated freeze-thaw cycles.
Host	Rabbit
Uniprot ID	P01872

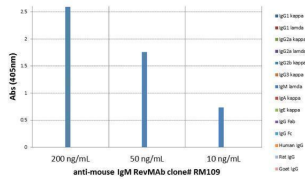
### Technical Details

Immunogen	Mouse IgM
Cross Reactivity	This antibody reacts to mouse IgM. No cross-reactivity with mouse IgG1, IgG2a, IgG2b, IgG3, IgA, IgE, human IgG, rat IgG, or goat IgG.
Isotype	Rabbit IgG
Form	Liquid
Concentration	1 mg/mL
Purification	Protein A affinity purified from an animal origin-free culture supernatant
Suggested Dilutions	ELISA: 0.005 ug/mL – 0.2 ug/mL.

## Anti-Mouse IgM Ighm Rabbit Monoclonal Antibody, Clone#RM109 (M07469-2) Images



ELISA result showing specificityA titer ELISA of mouse IgM. The plate was coated with different amounts of mouse IgM. A serial dilution of RM109 was used as the primary antibody. An alkaline phosphatase conjugated anti-rabbit IgG as the secondary antibody.



ELISA result showing specificityELISA of mouse immunoglobulins shows RM109 reacted to mouse IgM; no cross reactivity with IgG1, IgG2a, IgG2b, IgG3, IgA, IgE, human IgG, rat IgG, or goat IgG. The plate was coated with 50 ng/well of different immunoglobulins. 200 ng/mL, 50 ng/mL, or 10 ng/mL of RM109 was used as the primary antibody. An alkaline phosphatase conjugated anti-rabbit IgG as the secondary antibody.

## 2 Publications Citing This Product

1. PubMed ID: 20075284, Guan W, Wang Y, Hou L, Chen L, Li X, Yue W, Ma Y. Poult Sci. 2010 Feb;89(2):312-7. Doi: 10.3382/Ps.2009-00413. Derivation And Characteristics Of Pluripotent Embryonic Germ Cells In Duck.
2. PubMed ID: 27347314, Rat adipose-derived stem cells express low level of  $\beta$ -Gal and are dependent on CD59 for protection from human xenoantibody and complement-mediated lysis

Visit [bosterbio.com/anti-mouse-igm-rabbit-monoclonal-antibody-clone-rm109-m07469-2-boster.html](http://bosterbio.com/anti-mouse-igm-rabbit-monoclonal-antibody-clone-rm109-m07469-2-boster.html) to see all 2 publications.

## Submit a product review to Biocompare.com

Submit a review of this product to Biocompare.com to receive a \$20 Amazon.com giftcard! Your reviews help your fellow scientists make the right decisions. Thank you for your contribution.



Anti-Mouse IgM Ighm Rabbit Monoclonal Antibody, Clone#RM109

For Research Use Only. Not for use in diagnostic procedures.