

Anti-UBE2M Mouse Monoclonal Antibody [Clone ID: OTI2D9]

Catalog Number: M07478

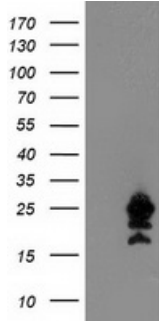
Overview

Product Name	Anti-UBE2M Mouse Monoclonal Antibody [Clone ID: OTI2D9]
Reactive Species	Dog, Human, Monkey, Mouse, Rat
Description	Boster Bio UBE2M mouse monoclonal antibody, clone OTI2D9 (formerly 2D9). Catalog# M07478. Tested in IF, WB. This antibody reacts with Human, Monkey, Mouse, Rat, Dog.
Application	IF, WB
Clonality	Monoclonal OTI2D9
Formulation	PBS (pH 7.3) containing 1% stabilizing protein, 50% glycerol and 0.02% sodium azide. This antibody is supplied in a stabilized formulation. Compatibility with conjugation reactions depends on the chemistry of the conjugation method used. For conjugation methods that are not compatible with the stabilizing components present in this formulation, a carrier-free antibody format is required.
Storage Instructions	Store at -20°C as received.
Host	Mouse
Uniprot ID	P61081

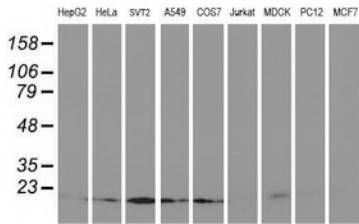
Technical Details

Immunogen	Full length human recombinant protein of human UBE2M (NP_003960) produced in HEK293T cell.
Isotype	IgG1
Concentration	0.69 mg/ml
Purification	Purified from mouse ascites fluids or tissue culture supernatant by affinity chromatography (protein A/G)
Suggested Dilutions	WB: 1:500~2000 IF: 1:100

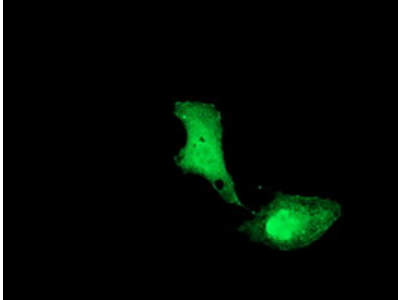
Anti-UBE2M Mouse Monoclonal Antibody [Clone ID: OTI2D9] (M07478) Images



HEK293T cells were transfected with the pCMV6-ENTRY control (Left lane) or pCMV6-ENTRY UBE2M (Right lane) cDNA for 48 hrs and lysed. Equivalent amounts of cell lysates (5 ug per lane) were separated by SDS-PAGE and immunoblotted with anti-UBE2M.



Western blot analysis of extracts (35ug) from 9 different cell lines by using anti-UBE2M monoclonal antibody.



Anti-UBE2M mouse monoclonal antibody (M07478) immunofluorescent staining of COS7 cells transiently transfected by pCMV6-ENTRY UBE2M.

Submit a product review to [Biocompare.com](https://www.biocompare.com)

Submit a review of this product to [Biocompare.com](https://www.biocompare.com) to receive a \$20 Amazon.com giftcard! Your reviews help your fellow scientists make the right decisions. Thank you for your contribution.



Anti-UBE2M Mouse Monoclonal Antibody [Clone ID: OTI2D9]

For Research Use Only. Not for use in diagnostic procedures.