

Anti-PSMA5 Antibody

Catalog Number: M07499

About PSMA5

The proteasome is a multicatalytic proteinase complex with a highly ordered ring-shaped 20S core structure. The core structure is composed of 4 rings of 28 non-identical subunits; 2 rings are composed of 7 alpha subunits and 2 rings are composed of 7 beta subunits. Proteasomes are distributed throughout eukaryotic cells at a high concentration and cleave peptides in an ATP/ubiquitin-dependent process in a non-lysosomal pathway. An essential function of a modified proteasome, the immunoproteasome, is the processing of class I MHC peptides. This gene encodes a member of the peptidase T1A family, that is a 20S core alpha subunit.

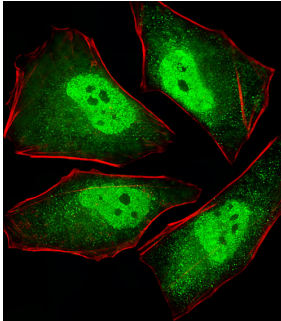
Overview

Product Name	Anti-PSMA5 Antibody
Reactive Species	Human, Mouse, Rat
Description	Boster Bio Anti-PSMA5 Antibody (Catalog # M07499). Tested in WB, IF, IHC-P application(s). This antibody reacts with Human, Mouse, Rat.
Application	IF, IHC-P, WB
Clonality	Monoclonal 426CT8.5.1
Formulation	Purified monoclonal antibody supplied in PBS with 0.09% (W/V) sodium azide.
Storage Instructions	Maintain refrigerated at 2-8°C for up to 2 weeks. For long-term storage, store at -20°C in small aliquots to prevent freeze-thaw cycles.
Host	Mouse
Uniprot ID	P28066

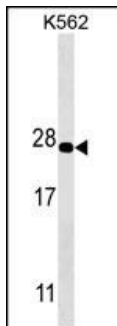
Technical Details

Immunogen	Purified His-tagged PSMA5 protein (Fragment) was used to produced this monoclonal antibody.
Predicted Reactive Species	Bovine
Isotype	IgG1
Purification	This antibody is purified through a protein G column, followed by dialysis against PBS.
Suggested Dilutions	IF: 1:25 WB: 1:1000 IHC-P: 1:25

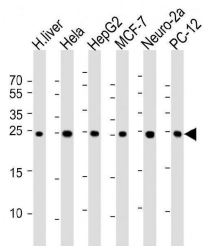
Anti-PSMA5 Antibody (M07499) Images



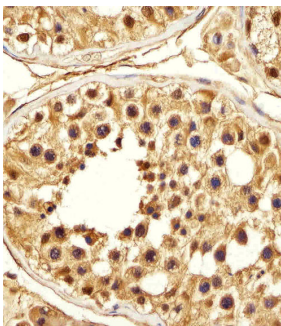
Fluorescent image of HeLa cells stained with XAF1 PSMA5 Antibody. M07499 was diluted at 1:25 dilution. An Alexa Fluor® 488-conjugated goat anti-mouse IgG at 1:400 dilution was used as the secondary antibody (green). Cytoplasmic actin was counterstained with Alexa Fluor® 555 conjugated with Phalloidin (red).



PSMA5 Antibody (Cat. #M07499) western blot analysis in K562 cell line lysates (35ug/lane). This demonstrates the PSMA5 antibody detected the PSMA5 protein (arrow).



All lanes : Anti-PSMA5 Antibody at 1:1000 dilution
Lane 1: human liver lysate
Lane 2: HeLa whole cell lysate
Lane 3: HepG2 whole cell lysate
Lane 4: MCF-7 whole cell lysate
Lane 5: Neuro-2a whole cell lysate
Lane 6: PC-12 whole cell lysate
Lysates/proteins at 20 ug per lane. Secondary Goat Anti-mouse IgG, (H+L), Peroxidase conjugated at 1/10000 dilution. Predicted band size : 26 kDa. Blocking/Dilution buffer: 5% NFDM/TBST.



Immunohistochemical analysis of paraffin-embedded H. testis section using PSMA5 Antibody (Cat#M07499). M07499 was diluted at 1:25 dilution. A peroxidase-conjugated goat anti-mouse IgG at 1:400 dilution was used as the secondary antibody, followed by DAB staining.

Submit a product review to [Biocompare.com](https://www.biocompare.com)

Submit a review of this product to [Biocompare.com](https://www.biocompare.com) to receive a \$20 Amazon.com giftcard! Your reviews help your fellow scientists make the right decisions. Thank you for your contribution.



Anti-PSMA5 Antibody

For Research Use Only. Not for use in diagnostic procedures.