

Anti-NAPE PLD (NAPEPLD) Mouse Monoclonal Antibody [Clone ID: OTI5F7]

Catalog Number: M07504

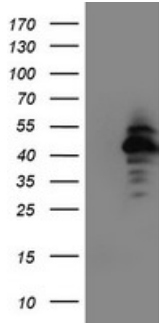
Overview

Product Name	Anti-NAPE PLD (NAPEPLD) Mouse Monoclonal Antibody [Clone ID: OTI5F7]
Reactive Species	Human, Mouse, Rat
Description	Boster Bio NAPEPLD (NAPE-PLD) mouse monoclonal antibody, clone OTI5F7 (formerly 5F7). Catalog# M07504. Tested in FC, IF, IHC, WB. This antibody reacts with Human, Mouse, Rat.
Application	Flow Cytometry, IF, IHC, WB
Clonality	Monoclonal OTI5F7
Formulation	PBS (pH 7.3) containing 1% stabilizing protein, 50% glycerol and 0.02% sodium azide. This antibody is supplied in a stabilized formulation. Compatibility with conjugation reactions depends on the chemistry of the conjugation method used. For conjugation methods that are not compatible with the stabilizing components present in this formulation, a carrier-free antibody format is required.
Storage Instructions	Store at -20°C as received.
Host	Mouse
Uniprot ID	Q6IQ20

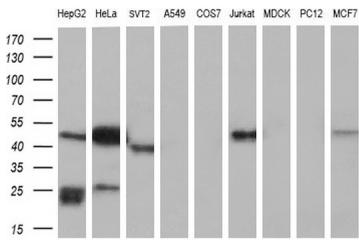
Technical Details

Immunogen	Full length human recombinant protein of human NAPEPLD (NP_945341) produced in HEK293T cell.
Isotype	IgG2a
Concentration	0.71 mg/ml
Purification	Purified from mouse ascites fluids or tissue culture supernatant by affinity chromatography (protein A/G)
Suggested Dilutions	WB 1:2000 IHC 1:150 IF 1:100 Flow Cytometry 1:100

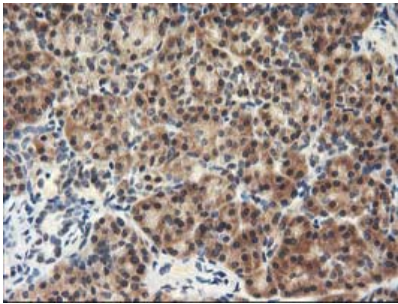
Anti-NAPE PLD (NAPEPLD) Mouse Monoclonal Antibody [Clone ID: OTI5F7] (M07504) Images



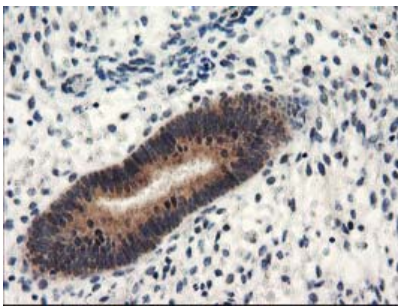
HEK293T cells were transfected with the pCMV6-ENTRY control (Left lane) or pCMV6-ENTRY NAPEPLD (Right lane) cDNA for 48 hrs and lysed. Equivalent amounts of cell lysates (5 ug per lane) were separated by SDS-PAGE and immunoblotted with anti-NAPEPLD.



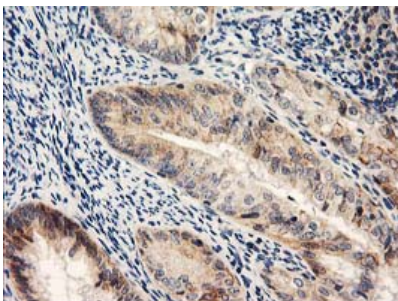
Western blot analysis of extracts (35ug) from 9 different cell lines by using anti-NAPEPLD monoclonal antibody (HepG2: human; HeLa: human; SVT2: mouse; A549: human; COS7: monkey; Jurkat: human; MDCK: canine; PC12: rat; MCF7: human) (1:200).



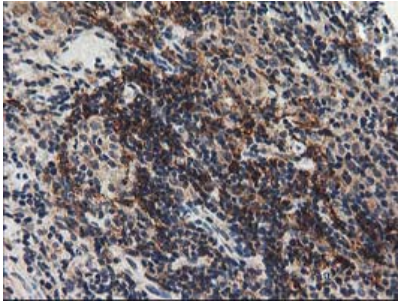
Immunohistochemical staining of paraffin-embedded Human pancreas tissue within the normal limits using anti-NAPEPLD mouse monoclonal antibody. (Heat-induced epitope retrieval by 10mM citric buffer)



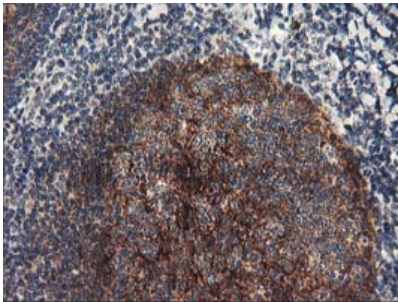
Immunohistochemical staining of paraffin-embedded Human endometrium tissue within the normal limits using anti-NAPEPLD mouse monoclonal antibody. (Heat-induced epitope retrieval by 10mM citric buffer)



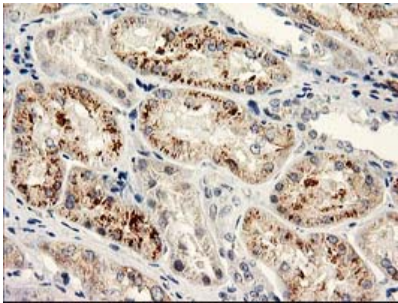
Immunohistochemical staining of paraffin-embedded Adenocarcinoma of Human endometrium tissue using anti-NAPEPLD mouse monoclonal antibody. (Heat-induced epitope retrieval by 10mM citric buffer)



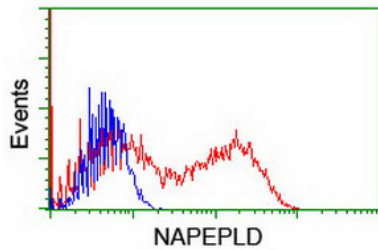
Immunohistochemical staining of paraffin-embedded Human lymphoma tissue using anti-NAPEPLD mouse monoclonal antibody. (Heat-induced epitope retrieval by 10mM citric buffer)



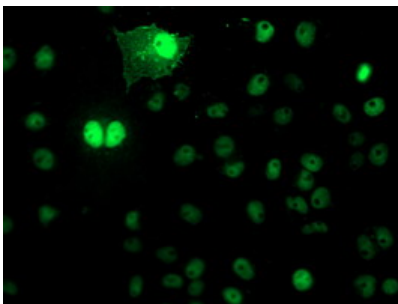
Immunohistochemical staining of paraffin-embedded Human tonsil within the normal limits using anti-NAPEPLD mouse monoclonal antibody. (Heat-induced epitope retrieval by 10mM citric buffer)



Immunohistochemical staining of paraffin-embedded Human Kidney tissue within the normal limits using anti-NAPEPLD mouse monoclonal antibody. (Heat-induced epitope retrieval by 10mM citric buffer)



HEK293T cells transfected with either NAPEPLD (Myc-DDK-tagged) overexpress plasmid (Red) or empty vector control plasmid (Blue) were immunostained by anti-NAPEPLD antibody (M07504)



Anti-NAPEPLD mouse monoclonal antibody (M07504) immunofluorescent staining of COS7 cells transiently transfected by pCMV6-ENTRY NAPEPLD.

Submit a product review to [Biocompare.com](https://www.biocompare.com)

Submit a review of this product to [Biocompare.com](https://www.biocompare.com) to receive a \$20 Amazon.com giftcard! Your



reviews help your fellow scientists make the right decisions. Thank you for your contribution.

Anti-NAPE PLD (NAPEPLD) Mouse Monoclonal Antibody [Clone ID: OTI5F7]

For Research Use Only. Not for use in diagnostic procedures.