

Anti-Human IgA IGHA1 Rabbit Monoclonal Antibody, Clone#RM128

Catalog Number: M07514-1

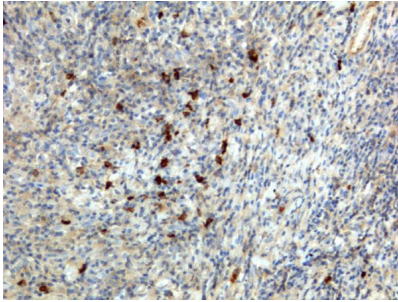
Overview

Product Name	Anti-Human IgA IGHA1 Rabbit Monoclonal Antibody, Clone#RM128
Reactive Species	Human
Description	Boster Bio Anti-Human IgA IGHA1 Rabbit Monoclonal Antibody, Clone#RM128 (Catalog # M07514-1). Tested in ELISA applications. This antibody reacts with Human.
Application	ELISA
Clonality	Monoclonal RM128
Formulation	50% Glycerol/PBS with 1% stabilizing protein and 0.09% sodium azide This antibody is supplied in a stabilized formulation. Compatibility with conjugation reactions depends on the chemistry of the conjugation method used. For conjugation methods that are not compatible with the stabilizing components present in this formulation, a carrier-free antibody format is required.
Storage Instructions	Store at -20°C for one year. Avoid repeated freeze-thaw cycles.
Host	Rabbit
Uniprot ID	P01876

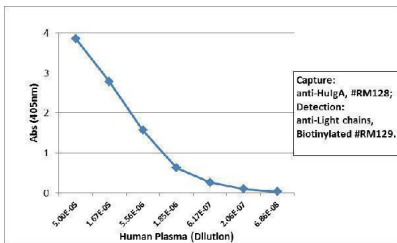
Technical Details

Immunogen	Human IgA
Cross Reactivity	This antibody reacts to human IgA, including both IgA1 and IgA2. No cross-reactivity with human IgG, IgM, IgD, or IgE.
Isotype	Rabbit IgG
Form	Liquid
Concentration	1 mg/mL
Purification	Protein A affinity purified from an animal origin-free culture supernatant
Suggested Dilutions	ELISA: 50ng/well – 200ng/well (for Capture) 0.05ug/mL – 0.2ug/mL (for Detection).

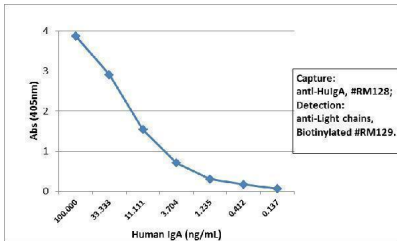
Anti-Human IgA IGHA1 Rabbit Monoclonal Antibody, Clone#RM128 (M07514-1) Images



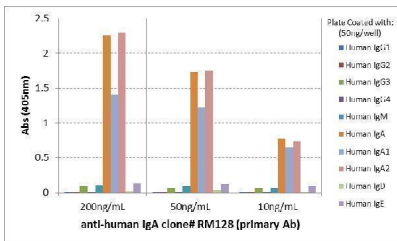
IHC result: Immunohistochemistry of human lymphoid tissue using anti-human IgA antibody RM128



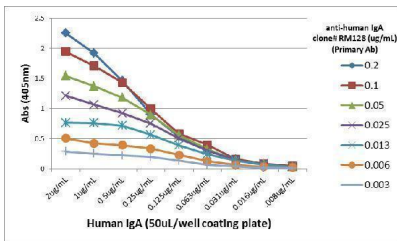
ELISA result showing specificity: Sandwich ELISA using RM128 as the capture antibody (100ng/well), and Biotinylated anti-human light chains (+) antibody RM129 as the detection antibody, followed by an alkaline phosphatase conjugated streptavidin.



ELISA result showing specificity: Sandwich ELISA using RM128 as the capture antibody (100ng/well), and Biotinylated anti-human light chains (+) antibody RM129 as the detection antibody, followed by an alkaline phosphatase conjugated streptavidin.



ELISA result showing specificity: ELISA of human immunoglobulins shows RM128 reacted to human IgA, including both IgA1 and IgA2. No cross reactivity with human IgG, IgM, IgD, or IgE. The plate was coated with 50 ng/well of different immunoglobulins. 200 ng/mL, 50ng/mL, or 10 ng/mL of RM128 was used as the primary antibody. An alkaline phosphatase conjugated anti-rabbit IgG as the secondary antibody.



ELISA result showing specificity: A titer ELISA using RM128. The plate was coated with different amounts of human IgA. A serial dilution of RM128 was used as the primary antibody. An alkaline phosphatase conjugated anti-rabbit IgG as the secondary antibody.

1 Publications Citing This Product

1. PubMed ID: 27618897, Quantitative Proteomic Analysis of Escherichia coli Heat-Labile Toxin B Subunit (LTB) with Enterovirus 71 (EV71) Subunit VP1

Visit bosterbio.com/anti-human-iga-rabbit-monoclonal-antibody-clone-rm128-m07514-1-boster.html to see all 1 publications.

Submit a product review to Biocompare.com

Submit a review of this product to Biocompare.com to receive a \$20 Amazon.com giftcard! Your reviews help your fellow scientists make the right decisions. Thank you for your contribution.



Anti-Human IgA IGHA1 Rabbit Monoclonal Antibody, Clone#RM128

For Research Use Only. Not for use in diagnostic procedures.