

Anti-Human IgA1 IGHA1 Rabbit Monoclonal Antibody, Clone#RM124

Catalog Number: M07514-2

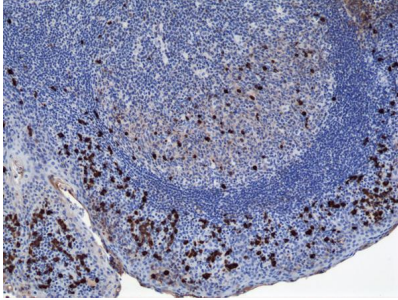
Overview

Product Name	Anti-Human IgA1 IGHA1 Rabbit Monoclonal Antibody, Clone#RM124
Reactive Species	Human
Description	Boster Bio Anti-Human IgA1 IGHA1 Rabbit Monoclonal Antibody, Clone#RM124 (Catalog # M07514-2). Tested in ELISA, ICC, IHC applications. This antibody reacts with Human.
Application	ELISA, IHC, ICC
Clonality	Monoclonal RM124
Formulation	50% Glycerol/PBS with 1% stabilizing protein and 0.09% sodium azide This antibody is supplied in a stabilized formulation. Compatibility with conjugation reactions depends on the chemistry of the conjugation method used. For conjugation methods that are not compatible with the stabilizing components present in this formulation, a carrier-free antibody format is required.
Storage Instructions	Store at -20°C for one year. Avoid repeated freeze-thaw cycles.
Host	Rabbit
Uniprot ID	P01876

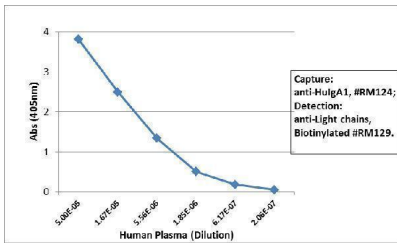
Technical Details

Immunogen	Human IgA
Cross Reactivity	This antibody reacts to human IgA1, and very slightly cross reacts with IgA2. No cross-reactivity with human IgG, IgM, IgD, or IgE.
Isotype	Rabbit IgG
Form	Liquid
Concentration	1 mg/mL
Purification	Protein A affinity purified from an animal origin-free culture supernatant
Suggested Dilutions	ELISA: 50ng/well – 200ng/well (for Capture) 0.05ug/mL – 0.2ug/mL (for Detection) Immunocytochemistry (ICC): 0.5ug/mL-2ug/mL Immunohistochemistry (IHC): 0.1ug/mL-1ug/mL.

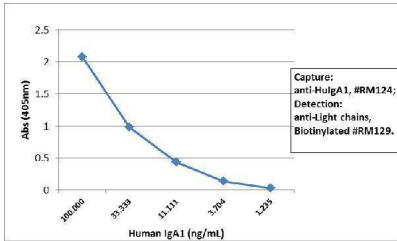
Anti-Human IgA1 IGHA1 Rabbit Monoclonal Antibody, Clone#RM124 (M07514-2) Images



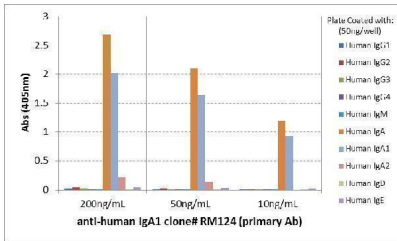
IHC result Immunohistochemistry of human tonsil tissue using anti-human IgA1 antibody RM124



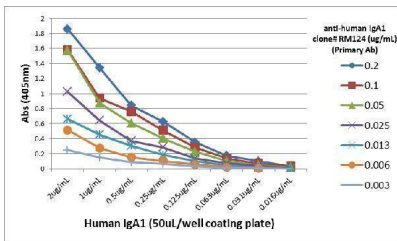
ELISA result showing specificity Sandwich ELISA using RM124 as the capture antibody (100ng/well), and Biotinylated anti-human light chains (+) antibody RM129 as the detection antibody, followed by an alkaline phosphatase conjugated streptavidin.



ELISA result showing specificity Sandwich ELISA using RM124 as the capture antibody (100ng/well), and Biotinylated anti-human light chains (+) antibody RM129 as the detection antibody, followed by an alkaline phosphatase conjugated streptavidin.



ELISA result showing specificity ELISA of human immunoglobulins shows RM124 only reacted to human IgA1. Very slightly cross reacts with IgA2. No cross reactivity with human IgG, IgM, IgD, or IgE. The plate was coated with 50 ng/well of different immunoglobulins. 200 ng/mL, 50ng/mL, or 10 ng/mL of RM124 was used as the primary antibody. An alkaline phosphatase conjugated anti-rabbit IgG as the secondary antibody.



ELISA result showing specificity A titer ELISA using RM124. The plate was coated with different amounts of human IgA1. A serial dilution of RM124 was used as the primary antibody. An alkaline phosphatase conjugated anti-rabbit IgG as the secondary antibody.

1 Publications Citing This Product

1. PubMed ID: 27618897, Quantitative Proteomic Analysis of Escherichia coli Heat-Labile Toxin B Subunit (LTB) with Enterovirus 71 (EV71) Subunit VP1

Visit bosterbio.com/anti-human-iga1-rabbit-monoclonal-antibody-clone-rm124-m07514-2-boster.html to see all 1 publications.

Submit a product review to Biocompare.com

Submit a review of this product to Biocompare.com to receive a \$20 Amazon.com giftcard! Your reviews help your fellow scientists make the right decisions. Thank you for your contribution.



Anti-Human IgA1 IGHA1 Rabbit Monoclonal Antibody, Clone#RM124

For Research Use Only. Not for use in diagnostic procedures.