

Anti-Ksp-Cadherin (Kidney-Specific Cadherin) / CDH16 Monoclonal Antibody

Catalog Number: M07518

About CDH16

This monoclonal antibody recognizes a protein of 130kDa, identified as Ksp-cadherin. Cadherins form a superfamily of related glycoproteins that mediate calcium-dependent cell adhesion and transmit signals from the extracellular matrix to the cytoplasm. Cadherins have been implicated in embryogenesis, tissue morphogenesis, tissue structure maintenance, cell polarization, neoplastic invasiveness and metastasis, and membrane transport. It is suggested that Ksp-cadherin is a marker for terminal differentiation of the basolateral membranes of renal tubular epithelial cells. Within the kidney, Ksp-Cadherin is found exclusively in the basolateral membrane of renal tubular epithelial cells and collecting duct cells, and not in glomeruli, renal interstitial cells, or blood vessels. Ksp-Cadherin has been suggested to distinguish Chromophobe Renal-Cell Carcinoma from Oncocytoma.

Overview

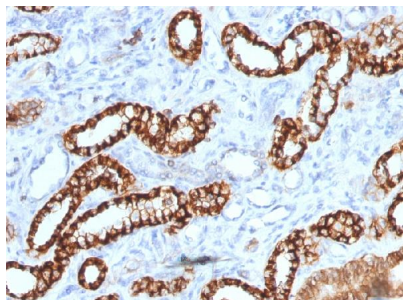
Product Name	Anti-Ksp-Cadherin (Kidney-Specific Cadherin) / CDH16 Monoclonal Antibody
Reactive Species	Dog, Human, Mouse, Rabbit, Rat
Description	Boster Bio Anti-Ksp-Cadherin (Kidney-Specific Cadherin) / CDH16 Monoclonal Antibody (Catalog # M07518). Tested in Flow Cytometry, WB, IHC applications. This antibody reacts with Human, Mouse, Rat, Rabbit, Dog.
Conjugate	Biotin
Application	Flow Cytometry, IHC, WB
Clonality	Monoclonal Clone: rCDH16/1071
Formulation	Prepared in 10mM PBS with 0.05% BSA & 0.05% azide. Also available WITHOUT BSA & azide at 1.0mg/ml.
Storage Instructions	Antibody with azide - store at 2 to 8°C. Antibody without azide - store at -20 to -80°C. Antibody is stable for 24 months. Non-hazardous. No MSDS required.
Host	Mouse
Uniprot ID	O75309

Technical Details

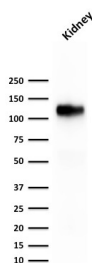
Immunogen	Recombinant full-length human CDH16 protein
Predicted Reactive Species	Pig, Rabbit
Cross Reactivity	Does not cross-react with primate, avian or amphibian GR.

Isotype	IgG1, kappa
Form	Liquid
Concentration	Purified antibody with BSA and azide at 200ug/ml
Purification	200ug/ml of recombinant monoclonal antibody purified by Protein A/G.
Suggested Dilutions	<p>Dilute the sample so that the expected range of concentrations fall within the detection range of this kit.</p> <p>If the expected range of concentration is unknown, a pilot test should be conducted to decide the optimal dilution ratio for your samples.</p> <p>Some PubMed article(s) citing the expression level of this target are as follows:</p> <p>Boster Bio's internal QC testing used:</p> <p>Flow Cytometry (1-2ug/million cells)</p> <p>Western Blot (1-2ug/ml)</p> <p>Immunohistochemistry (Formalin-fixed) (1-2ug/ml for 30 minutes at RT)(Staining of formalin-fixed tissues requires heating tissue sections in 10mM Tris with 1mM EDTA, pH 9.0, for 45 min at 95&degC followed by cooling at RT for 20 minutes)</p> <p>Optimal dilution for a specific application should be determined.</p>

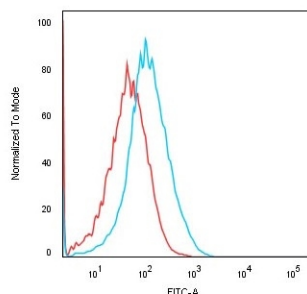
Anti-Ksp-Cadherin (Kidney-Specific Cadherin) / CDH16 Monoclonal Antibody (M07518) Images



Formalin-fixed, paraffin-embedded human Renal Cell Carcinoma stained with Anti-KSP-Cadherin Recombinant Mouse Monoclonal Antibody (rCDH16/1071).



Western Blot analysis of human kidney tissue lysate using Anti-KSP-Cadherin Recombinant Mouse Monoclonal Antibody (rCDH16/1071).



Flow Cytometric analysis of Human HEK293 cells using Anti-KSP-Cadherin Recombinant Mouse Monoclonal Antibody (rCDH16/1071) followed by Goat anti-Mouse IgG-CF488 (Blue); Isotype Control (Red).

Submit a product review to Biocompare.com

Submit a review of this product to Biocompare.com to receive a \$20 Amazon.com giftcard! Your reviews help your fellow scientists make the right decisions. Thank you for your contribution.



Anti-Ksp-Cadherin (Kidney-Specific Cadherin) / CDH16 Monoclonal Antibody