

## Anti-PTPN7 Mouse Monoclonal Antibody [Clone ID: OTI3B10]

Catalog Number: M07600

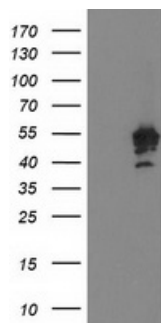
### Overview

Product Name	Anti-PTPN7 Mouse Monoclonal Antibody [Clone ID: OTI3B10]
Reactive Species	Dog, Human, Mouse, Rat
Description	Boster Bio PTPN7 (HePTP) mouse monoclonal antibody, clone OTI3B10 (formerly 3B10). Catalog# M07600. Tested in IF, WB. This antibody reacts with Human, Mouse, Rat, Dog.
Application	IF, WB
Clonality	Monoclonal OTI3B10
Formulation	PBS (pH 7.3) containing 1% stabilizing protein, 50% glycerol and 0.02% sodium azide. This antibody is supplied in a stabilized formulation. Compatibility with conjugation reactions depends on the chemistry of the conjugation method used. For conjugation methods that are not compatible with the stabilizing components present in this formulation, a carrier-free antibody format is required.
Storage Instructions	Store at -20°C as received.
Host	Mouse
Uniprot ID	P35236

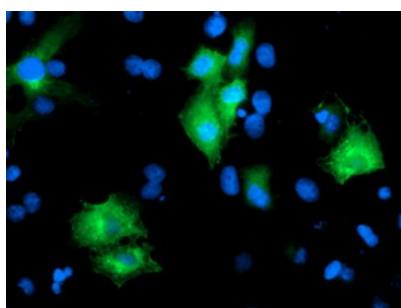
### Technical Details

Immunogen	Full length human recombinant protein of human PTPN7 (NP_542155) produced in HEK293T cell.
Isotype	IgG2b
Concentration	0.72 mg/ml
Purification	Purified from mouse ascites fluids or tissue culture supernatant by affinity chromatography (protein A/G)
Suggested Dilutions	WB 1:500~2000 IF 1:100

## Anti-PTPN7 Mouse Monoclonal Antibody [Clone ID: OTI3B10] (M07600) Images



HEK293T cells were transfected with the pCMV6-ENTRY control (Left lane) or pCMV6-ENTRY PTPN7 (Right lane) cDNA for 48 hrs and lysed. Equivalent amounts of cell lysates (5 ug per lane) were separated by SDS-PAGE and immunoblotted with anti-PTPN7.



Anti-PTPN7 mouse monoclonal antibody (M07600) immunofluorescent staining of COS7 cells transiently transfected by pCMV6-ENTRY PTPN7.

### Submit a product review to Biocompare.com

Submit a review of this product to Biocompare.com to receive a \$20 Amazon.com giftcard! Your reviews help your fellow scientists make the right decisions. Thank you for your contribution.



Anti-PTPN7 Mouse Monoclonal Antibody [Clone ID: OTI3B10]

For Research Use Only. Not for use in diagnostic procedures.