

Anti-SDSL Mouse Monoclonal Antibody [Clone ID: OTI1G4]

Catalog Number: M07606-1

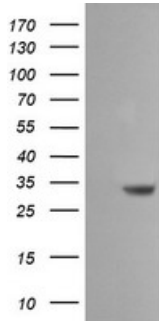
Overview

Product Name	Anti-SDSL Mouse Monoclonal Antibody [Clone ID: OTI1G4]
Reactive Species	Human
Description	Boster Bio SDSL mouse monoclonal antibody, clone OTI1G4 (formerly 1G4). Catalog# M07606-1. Tested in IF, WB. This antibody reacts with Human.
Application	IF, WB
Clonality	Monoclonal OTI1G4
Formulation	PBS (pH 7.3) containing 1% stabilizing protein, 50% glycerol and 0.02% sodium azide. This antibody is supplied in a stabilized formulation. Compatibility with conjugation reactions depends on the chemistry of the conjugation method used. For conjugation methods that are not compatible with the stabilizing components present in this formulation, a carrier-free antibody format is required.
Storage Instructions	Store at -20°C as received.
Host	Mouse
Uniprot ID	Q96GA7

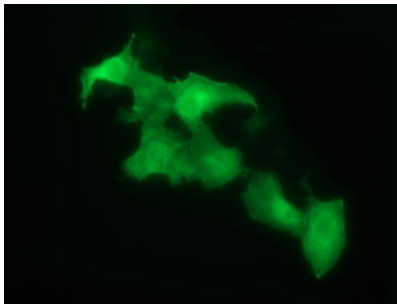
Technical Details

Immunogen	Full length human recombinant protein of human SDSL (NP_612441) produced in HEK293T cell.
Isotype	IgG1
Concentration	1 mg/ml
Purification	Purified from mouse ascites fluids or tissue culture supernatant by affinity chromatography (protein A/G)
Suggested Dilutions	WB 1:4000 IF 1:100

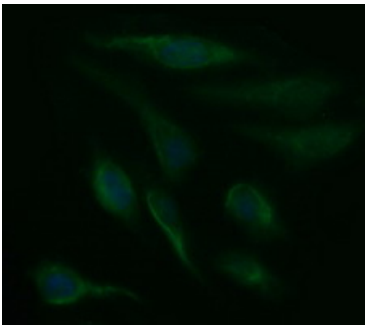
Anti-SDSL Mouse Monoclonal Antibody [Clone ID: OTI1G4] (M07606-1) Images



HEK293T cells were transfected with the pCMV6-ENTRY control (Left lane) or pCMV6-ENTRY SDSL (Right lane) cDNA for 48 hrs and lysed. Equivalent amounts of cell lysates (5 ug per lane) were separated by SDS-PAGE and immunoblotted with anti-SDSL.



Anti-SDSL mouse monoclonal antibody (M07606-1) immunofluorescent staining of COS7 cells transiently transfected by pCMV6-ENTRY SDSL.



Immunofluorescent staining of HeLa cells using anti-SDSL mouse monoclonal antibody (M07606-1).

Submit a product review to [Biocompare.com](https://www.biocompare.com)

Submit a review of this product to [Biocompare.com](https://www.biocompare.com) to receive a \$20 Amazon.com giftcard! Your reviews help your fellow scientists make the right decisions. Thank you for your contribution.



Anti-SDSL Mouse Monoclonal Antibody [Clone ID: OTI1G4]

For Research Use Only. Not for use in diagnostic procedures.