

## Anti-BOULE (BOLL) Mouse Monoclonal Antibody [Clone ID: OTI2D11]

Catalog Number: M07626

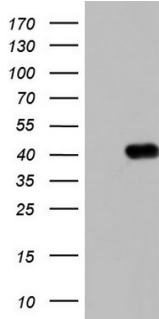
### Overview

|                      |  |
|----------------------|--|
| Product Name         | Anti-BOULE (BOLL) Mouse Monoclonal Antibody [Clone ID: OTI2D11]  |
| Reactive Species     | Human, Mouse, Rat  |
| Description          | Boster Bio Purified BOLL mouse monoclonal antibody, clone OTI2D11 (formerly 2D11). Catalog# M07626. Tested in IHC, WB. This antibody reacts with Human, Mouse, Rat.  |
| Application          | IHC, WB  |
| Clonality            | Monoclonal OTI2D11   |
| Formulation          | PBS (pH 7.3) containing 1% stabilizing protein, 50% glycerol and 0.02% sodium azide. This antibody is supplied in a stabilized formulation. Compatibility with conjugation reactions depends on the chemistry of the conjugation method used. For conjugation methods that are not compatible with the stabilizing components present in this formulation, a carrier-free antibody format is required. |
| Storage Instructions | Store at -20°C as received.  |
| Host                 | Mouse  |
| Uniprot ID           | Q8N9W6   |

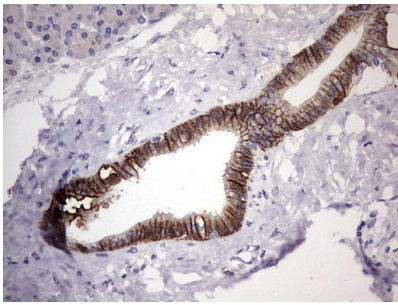
### Technical Details

|                     |   |
|---------------------|---|
| Immunogen           | Full length human recombinant protein of human BOLL (NP_149019) produced in E.coli.                       |
| Isotype             | IgG1  |
| Concentration       | 1 mg/ml   |
| Purification        | Purified from mouse ascites fluids or tissue culture supernatant by affinity chromatography (protein A/G) |
| Suggested Dilutions | WB 1:2000<br>IHC 1:150  |

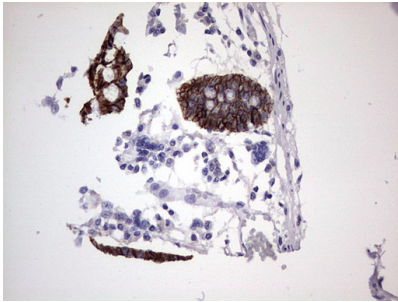
## Anti-BOULE (BOLL) Mouse Monoclonal Antibody [Clone ID: OTI2D11] (M07626) Images



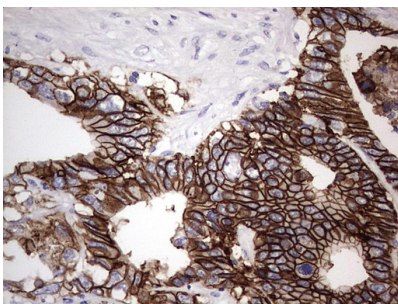
HEK293T cells were transfected with the pCMV6-ENTRY control (Left lane) or pCMV6-ENTRY BOLL (Right lane) cDNA for 48 hrs and lysed. Equivalent amounts of cell lysates (5 ug per lane) were separated by SDS-PAGE and immunoblotted with anti-BOLL.



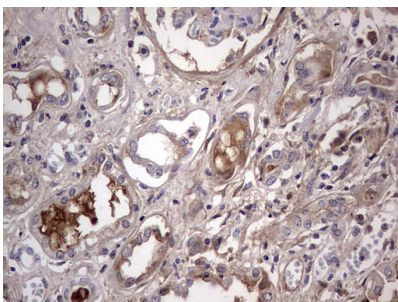
Immunohistochemical staining of paraffin-embedded Human pancreas tissue within the normal limits using anti-BOLL mouse monoclonal antibody. (Heat-induced epitope retrieval by 1 mM EDTA in 10mM Tris)



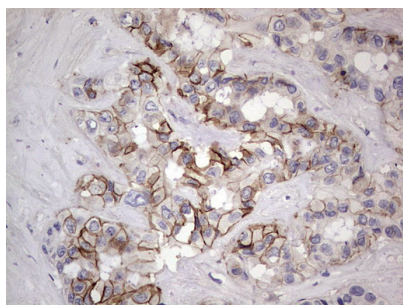
Immunohistochemical staining of paraffin-embedded Human colon tissue within the normal limits using anti-BOLL mouse monoclonal antibody. (Heat-induced epitope retrieval by 1 mM EDTA in 10mM Tris)



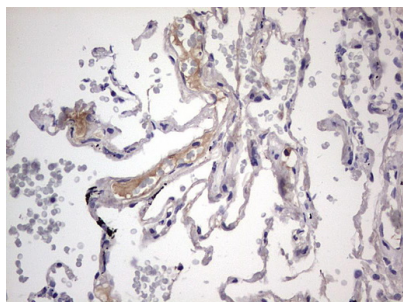
Immunohistochemical staining of paraffin-embedded Adenocarcinoma of Human colon tissue using anti-BOLL mouse monoclonal antibody. (Heat-induced epitope retrieval by 1 mM EDTA in 10mM Tris)



Immunohistochemical staining of paraffin-embedded Human Kidney tissue within the normal limits using anti-BOLL mouse monoclonal antibody. (Heat-induced epitope retrieval by 1 mM EDTA in 10mM Tris)



Immunohistochemical staining of paraffin-embedded Carcinoma of Human liver tissue using anti-BOLL mouse monoclonal antibody. (Heat-induced epitope retrieval by 1 mM EDTA in 10mM Tris)



Immunohistochemical staining of paraffin-embedded Human lung tissue within the normal limits using anti-BOLL mouse monoclonal antibody. (Heat-induced epitope retrieval by 1 mM EDTA in 10mM Tris)

## Submit a product review to Biocompare.com

Submit a review of this product to Biocompare.com to receive a \$20 Amazon.com giftcard! Your reviews help your fellow scientists make the right decisions. Thank you for your contribution.



Anti-BOULE (BOLL) Mouse Monoclonal Antibody [Clone ID: OTI2D11]

For Research Use Only. Not for use in diagnostic procedures.