

## Anti-CAPZA1 Mouse Monoclonal Antibody [Clone ID: OTI7C8]

Catalog Number: M07665-1

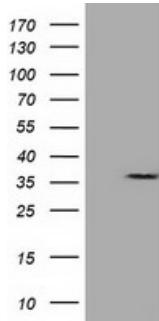
### Overview

Product Name	Anti-CAPZA1 Mouse Monoclonal Antibody [Clone ID: OTI7C8]
Reactive Species	Dog, Human, Monkey, Mouse, Rat
Description	Boster Bio CAPZA1 mouse monoclonal antibody, clone OTI7C8 (formerly 7C8). Catalog# M07665-1. Tested in FC, WB. This antibody reacts with Human, Monkey, Mouse, Rat, Dog.
Application	Flow Cytometry, WB
Clonality	Monoclonal OTI7C8
Formulation	PBS (pH 7.3) containing 1% stabilizing protein, 50% glycerol and 0.02% sodium azide. This antibody is supplied in a stabilized formulation. Compatibility with conjugation reactions depends on the chemistry of the conjugation method used. For conjugation methods that are not compatible with the stabilizing components present in this formulation, a carrier-free antibody format is required.
Storage Instructions	Store at -20°C as received.
Host	Mouse
Uniprot ID	P52907

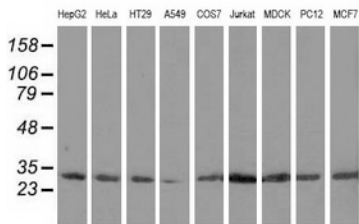
### Technical Details

Immunogen	Full length human recombinant protein of human CAPZA1 (NP_006126) produced in HEK293T cell.
Isotype	IgG1
Concentration	0.56 mg/ml
Purification	Purified from mouse ascites fluids or tissue culture supernatant by affinity chromatography (protein A/G)
Suggested Dilutions	WB 1:200~500

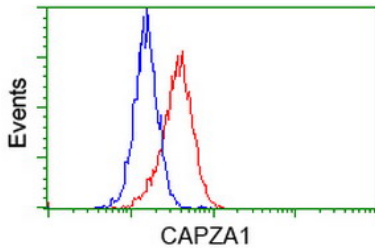
## Anti-CAPZA1 Mouse Monoclonal Antibody [Clone ID: OTI7C8] (M07665-1) Images



HEK293T cells were transfected with the pCMV6-ENTRY control (Left lane) or pCMV6-ENTRY CAPZA1 (Right lane) cDNA for 48 hrs and lysed. Equivalent amounts of cell lysates (5 ug per lane) were separated by SDS-PAGE and immunoblotted with anti-CAPZA1.



Western blot analysis of extracts (35ug) from 9 different cell lines by using anti-CAPZA1 monoclonal antibody.



Flow cytometric Analysis of HeLa cells

### Submit a product review to Biocompare.com

Submit a review of this product to Biocompare.com to receive a \$20 Amazon.com giftcard! Your reviews help your fellow scientists make the right decisions. Thank you for your contribution.



Anti-CAPZA1 Mouse Monoclonal Antibody [Clone ID: OTI7C8]

For Research Use Only. Not for use in diagnostic procedures.