

## Anti-PACSIN3 Mouse Monoclonal Antibody [Clone ID: OTI2E4]

Catalog Number: M07725

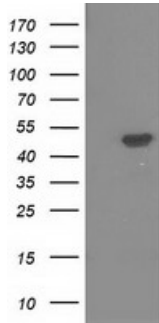
### Overview

Product Name	Anti-PACSIN3 Mouse Monoclonal Antibody [Clone ID: OTI2E4]
Reactive Species	Human, Mouse, Rat
Description	Boster Bio PACSIN3 mouse monoclonal antibody, clone OTI2E4 (formerly 2E4). Catalog# M07725. Tested in FC, IHC, WB. This antibody reacts with Human, Mouse, Rat.
Application	Flow Cytometry, IHC, WB
Clonality	Monoclonal OTI2E4
Formulation	PBS (pH 7.3) containing 1% stabilizing protein, 50% glycerol and 0.02% sodium azide. This antibody is supplied in a stabilized formulation. Compatibility with conjugation reactions depends on the chemistry of the conjugation method used. For conjugation methods that are not compatible with the stabilizing components present in this formulation, a carrier-free antibody format is required.
Storage Instructions	Store at -20°C as received.
Host	Mouse
Uniprot ID	Q9UKS6

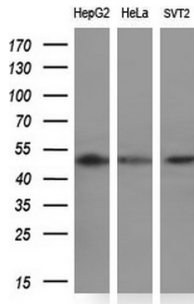
### Technical Details

Immunogen	Full length human recombinant protein of human PACSIN3 (NP_057307) produced in HEK293T cell.
Isotype	IgG1
Concentration	0.45 mg/ml
Purification	Purified from mouse ascites fluids or tissue culture supernatant by affinity chromatography (protein A/G)
Suggested Dilutions	WB 1:2000 IHC 1:150 Flow Cytometry 1:100

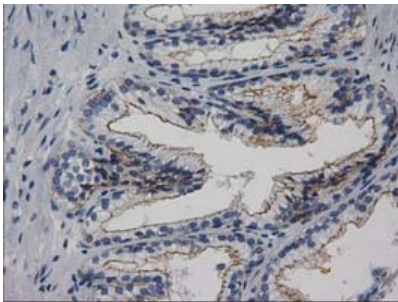
## Anti-PACSIN3 Mouse Monoclonal Antibody [Clone ID: OTI2E4] (M07725) Images



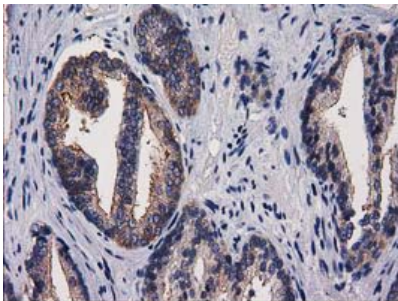
HEK293T cells were transfected with the pCMV6-ENTRY control (Left lane) or pCMV6-ENTRY PACSIN3 (Right lane) cDNA for 48 hrs and lysed. Equivalent amounts of cell lysates (5 ug per lane) were separated by SDS-PAGE and immunoblotted with anti-PACSIN3.



Western blot analysis of extracts (10ug) from 3 different cell lines by using anti-PACSIN3 monoclonal antibody (1:200).

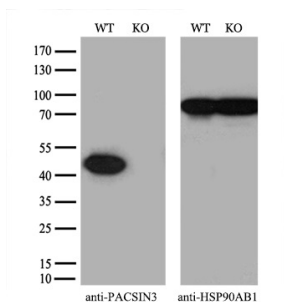
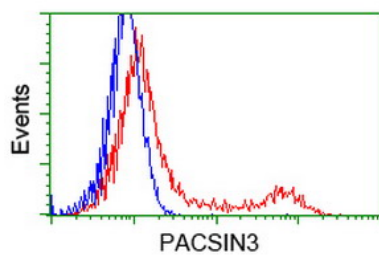


Immunohistochemical staining of paraffin-embedded Human prostate tissue within the normal limits using anti-PACSIN3 mouse monoclonal antibody. (Heat-induced epitope retrieval by 10mM citric buffer)



Immunohistochemical staining of paraffin-embedded Carcinoma of Human prostate tissue using anti-PACSIN3 mouse monoclonal antibody. (Heat-induced epitope retrieval by 10mM citric buffer)

HEK293T cells transfected with either PACSIN3 (Myc-DDK-tagged) overexpress plasmid (Red) or empty vector control plasmid (Blue) were immunostained by anti-PACSIN3 antibody (M07725)



Equivalent amounts of cell lysates (10 ug per lane) of wild-type 293T cells (WT) and PACSIN3-Knockout 293T cells (KO) were separated by SDS-PAGE and immunoblotted with anti-PACSIN3 monoclonal antibody M07725

## Submit a product review to Biocompare.com

Submit a review of this product to Biocompare.com to receive a \$20 Amazon.com giftcard! Your reviews help your fellow scientists make the right decisions. Thank you for your contribution.



Anti-PACSIN3 Mouse Monoclonal Antibody [Clone ID: OTI2E4]

For Research Use Only. Not for use in diagnostic procedures.