

## Anti-CHMP5 Mouse Monoclonal Antibody [Clone ID: OTI5C7]

Catalog Number: M07734

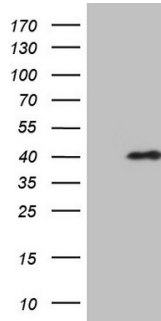
### Overview

Product Name	Anti-CHMP5 Mouse Monoclonal Antibody [Clone ID: OTI5C7]
Reactive Species	Human, Mouse, Rat
Description	Boster Bio CHMP5 mouse monoclonal antibody, clone OTI5C7 (formerly 5C7). Catalog# M07734. Tested in IHC, WB. This antibody reacts with Human, Mouse, Rat.
Application	IHC, WB
Clonality	Monoclonal OTI5C7
Formulation	PBS (pH 7.3) containing 1% stabilizing protein, 50% glycerol and 0.02% sodium azide. This antibody is supplied in a stabilized formulation. Compatibility with conjugation reactions depends on the chemistry of the conjugation method used. For conjugation methods that are not compatible with the stabilizing components present in this formulation, a carrier-free antibody format is required.
Storage Instructions	Store at -20°C as received.
Host	Mouse
Uniprot ID	Q9NZZ3

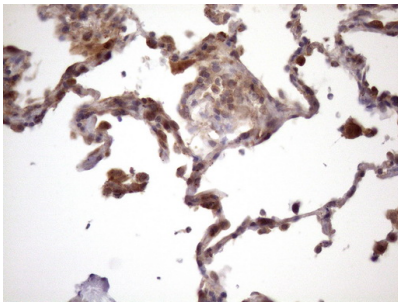
### Technical Details

Immunogen	Full length human recombinant protein of human CHMP5 (NP_057494) produced in E.coli.
Isotype	IgG1
Concentration	1 mg/ml
Purification	Purified from mouse ascites fluids or tissue culture supernatant by affinity chromatography (protein A/G)
Suggested Dilutions	WB 1:2000 IHC 1:150

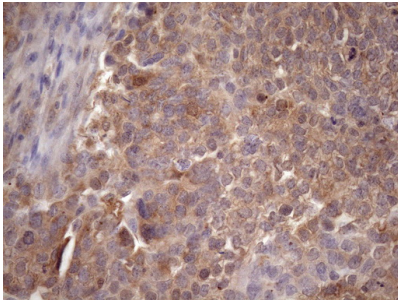
## Anti-CHMP5 Mouse Monoclonal Antibody [Clone ID: OTI5C7] (M07734) Images



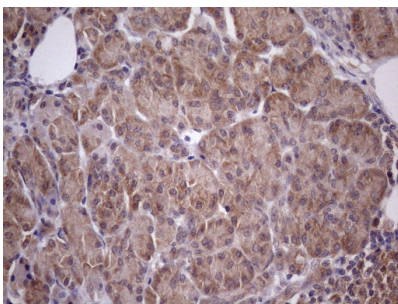
HEK293T cells were transfected with the pCMV6-ENTRY control (Left lane) or pCMV6-ENTRY CHMP5 (Right lane) cDNA for 48 hrs and lysed. Equivalent amounts of cell lysates (5 ug per lane) were separated by SDS-PAGE and immunoblotted with anti-CHMP5 (1:2000).



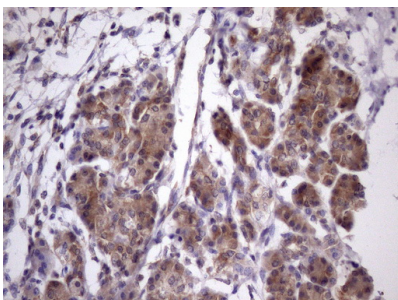
Immunohistochemical staining of paraffin-embedded Carcinoma of Human lung tissue using anti-CHMP5 mouse monoclonal antibody. (Heat-induced epitope retrieval by Tris-EDTA)



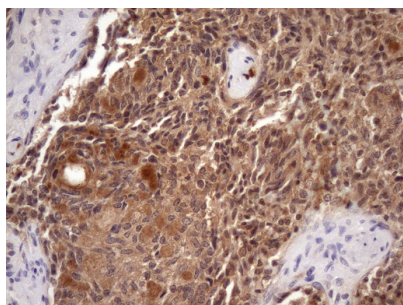
Immunohistochemical staining of paraffin-embedded Adenocarcinoma of Human ovary tissue using anti-CHMP5 mouse monoclonal antibody. (Heat-induced epitope retrieval by Tris-EDTA)



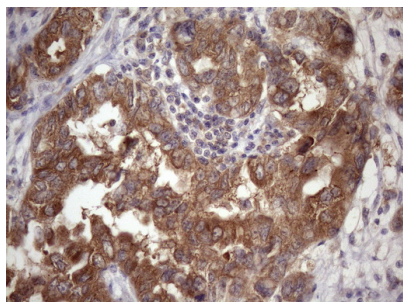
Immunohistochemical staining of paraffin-embedded Human pancreas tissue within the normal limits using anti-CHMP5 mouse monoclonal antibody. (Heat-induced epitope retrieval by Tris-EDTA)



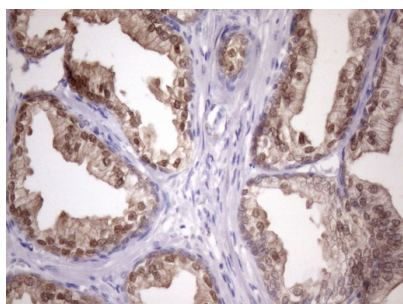
Immunohistochemical staining of paraffin-embedded Carcinoma of Human pancreas tissue using anti-CHMP5 mouse monoclonal antibody. (Heat-induced epitope retrieval by Tris-EDTA)



Immunohistochemical staining of paraffin-embedded Human thyroid tissue within the normal limits using anti-CHMP5 mouse monoclonal antibody. (Heat-induced epitope retrieval by Tris-EDTA)



Immunohistochemical staining of paraffin-embedded Adenocarcinoma of Human endometrium tissue using anti-CHMP5 mouse monoclonal antibody. (Heat-induced epitope retrieval by Tris-EDTA)



Immunohistochemical staining of paraffin-embedded Human prostate tissue within the normal limits using anti-CHMP5 mouse monoclonal antibody. (Heat-induced epitope retrieval by Tris-EDTA)

## Submit a product review to [Biocompare.com](https://www.biocompare.com)

Submit a review of this product to [Biocompare.com](https://www.biocompare.com) to receive a \$20 Amazon.com giftcard! Your reviews help your fellow scientists make the right decisions. Thank you for your contribution.



Anti-CHMP5 Mouse Monoclonal Antibody [Clone ID: OTI5C7]

For Research Use Only. Not for use in diagnostic procedures.