

Anti-RAB17 Mouse Monoclonal Antibody [Clone ID: OTI5E2]

Catalog Number: M07742

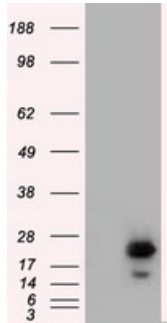
Overview

Product Name	Anti-RAB17 Mouse Monoclonal Antibody [Clone ID: OTI5E2]
Reactive Species	Human
Description	Boster Bio Anti-RAB17 mouse monoclonal antibody, clone OTI5E2 (formerly 5E2). Catalog# M07742. Tested in IF, IHC, WB. This antibody reacts with Human.
Application	IF, IHC, WB
Clonality	Monoclonal OTI5E2
Formulation	PBS (pH 7.3) containing 1% stabilizing protein, 50% glycerol and 0.02% sodium azide. This antibody is supplied in a stabilized formulation. Compatibility with conjugation reactions depends on the chemistry of the conjugation method used. For conjugation methods that are not compatible with the stabilizing components present in this formulation, a carrier-free antibody format is required.
Storage Instructions	Store at -20°C as received.
Host	Mouse
Uniprot ID	Q9H0T7

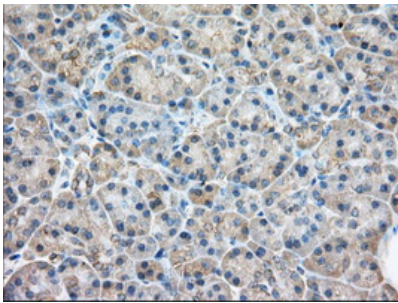
Technical Details

Immunogen	Full length human recombinant protein of human RAB17 (NP_071894) produced in HEK293T cell.
Isotype	IgG1
Concentration	0.63 mg/ml
Purification	Purified from mouse ascites fluids or tissue culture supernatant by affinity chromatography (protein A/G)
Suggested Dilutions	WB 1:2000 IHC 1:50 IF 1:100

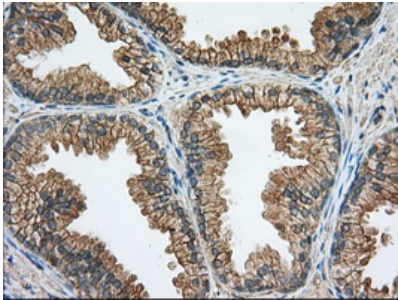
Anti-RAB17 Mouse Monoclonal Antibody [Clone ID: OTI5E2] (M07742) Images



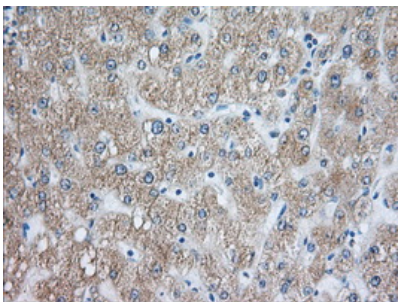
HEK293T cells were transfected with the pCMV6-ENTRY control (Left lane) or pCMV6-ENTRY RAB17 (Right lane) cDNA for 48 hrs and lysed. Equivalent amounts of cell lysates (5 ug per lane) were separated by SDS-PAGE and immunoblotted with anti-RAB17.



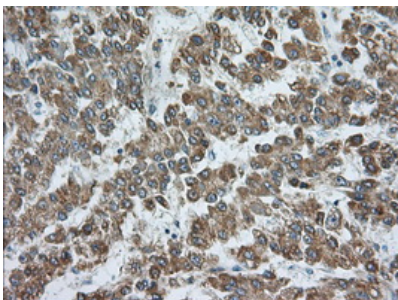
Immunohistochemical staining of paraffin-embedded Human pancreas tissue within the normal limits using anti-RAB17 mouse monoclonal antibody. (Heat-induced epitope retrieval by 10mM citric buffer)



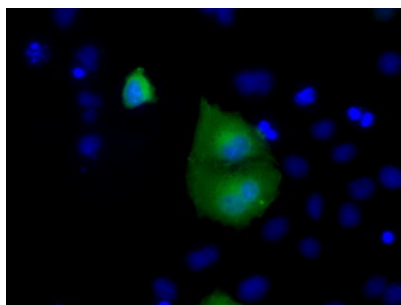
Immunohistochemical staining of paraffin-embedded Human prostate tissue within the normal limits using anti-RAB17 mouse monoclonal antibody. (Heat-induced epitope retrieval by 10mM citric buffer)



Immunohistochemical staining of paraffin-embedded Human liver tissue within the normal limits using anti-RAB17 mouse monoclonal antibody. (Heat-induced epitope retrieval by 10mM citric buffer)



Immunohistochemical staining of paraffin-embedded Carcinoma of Human liver tissue using anti-RAB17 mouse monoclonal antibody. (Heat-induced epitope retrieval by 10mM citric buffer)



Anti-RAB17 mouse monoclonal antibody (M07742)
immunofluorescent staining of COS7 cells transiently
transfected by pCMV6-ENTRY RAB17.

Submit a product review to Biocompare.com

Submit a review of this product to Biocompare.com to receive a \$20 Amazon.com giftcard! Your reviews help your fellow scientists make the right decisions. Thank you for your contribution.



Anti-RAB17 Mouse Monoclonal Antibody [Clone ID: OTI5E2]

For Research Use Only. Not for use in diagnostic procedures.