

## Anti-PPP1R7 Mouse Monoclonal Antibody [Clone ID: OTI4F9]

Catalog Number: M07759

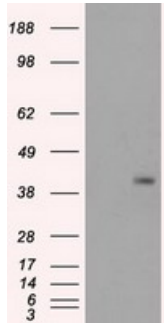
### Overview

Product Name	Anti-PPP1R7 Mouse Monoclonal Antibody [Clone ID: OTI4F9]
Reactive Species	Dog, Human, Mouse, Rat
Description	Boster Bio PPP1R7 mouse monoclonal antibody, clone OTI4F9 (formerly 4F9). Catalog# M07759. Tested in IF, IHC, WB. This antibody reacts with Human, Mouse, Rat, Dog.
Application	IF, IHC, WB
Clonality	Monoclonal OTI4F9
Formulation	PBS (pH 7.3) containing 1% stabilizing protein, 50% glycerol and 0.02% sodium azide. This antibody is supplied in a stabilized formulation. Compatibility with conjugation reactions depends on the chemistry of the conjugation method used. For conjugation methods that are not compatible with the stabilizing components present in this formulation, a carrier-free antibody format is required.
Storage Instructions	Store at -20°C as received.
Host	Mouse
Uniprot ID	Q15435

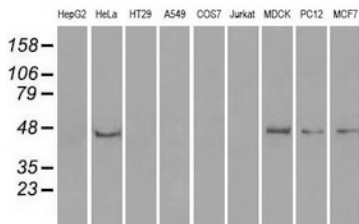
### Technical Details

Immunogen	Full length human recombinant protein of human PPP1R7 (NP_002703) produced in HEK293T cell.
Isotype	IgG1
Concentration	1 mg/ml
Purification	Purified from mouse ascites fluids or tissue culture supernatant by affinity chromatography (protein A/G)
Suggested Dilutions	WB 1:2000 IHC 1:50 IF 1:50~100

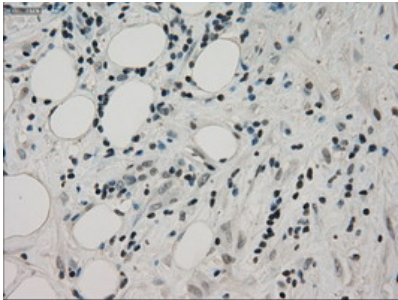
## Anti-PPP1R7 Mouse Monoclonal Antibody [Clone ID: OTI4F9] (M07759) Images



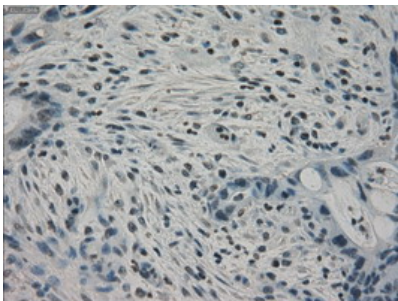
HEK293T cells were transfected with the pCMV6-ENTRY control (Left lane) or pCMV6-ENTRY PPP1R7 (Right lane) cDNA for 48 hrs and lysed. Equivalent amounts of cell lysates (5 ug per lane) were separated by SDS-PAGE and immunoblotted with anti-PPP1R7.



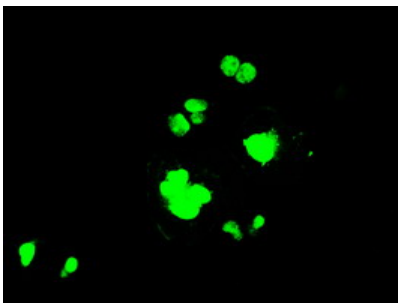
Western blot analysis of extracts (35ug) from 9 different cell lines by using anti-PPP1R7 monoclonal antibody (HepG2: human; HeLa: human; SVT2: mouse; A549: human; COS7: monkey; Jurkat: human; MDCK: canine; PC12: rat; MCF7: human).



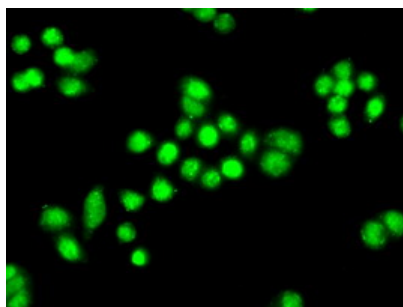
Immunohistochemical staining of paraffin-embedded Carcinoma of Human pancreas tissue using anti-PPP1R7 mouse monoclonal antibody. (Heat-induced epitope retrieval by 10mM citric buffer)



Immunohistochemical staining of paraffin-embedded Adenocarcinoma of Human colon tissue using anti-PPP1R7 mouse monoclonal antibody. (Heat-induced epitope retrieval by 10mM citric buffer)



Anti-PPP1R7 mouse monoclonal antibody (M07759) immunofluorescent staining of COS7 cells transiently transfected by pCMV6-ENTRY PPP1R7.



Immunofluorescent staining of HT29 cells using anti-PPP1R7 mouse monoclonal antibody (M07759).

## Submit a product review to Biocompare.com

Submit a review of this product to Biocompare.com to receive a \$20 Amazon.com giftcard! Your reviews help your fellow scientists make the right decisions. Thank you for your contribution.



Anti-PPP1R7 Mouse Monoclonal Antibody [Clone ID: OTI4F9]

For Research Use Only. Not for use in diagnostic procedures.