

Anti-Human IgG2 Rabbit Monoclonal Antibody

Catalog Number: M07865-1

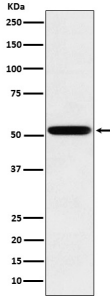
Overview

Product Name	Anti-Human IgG2 Rabbit Monoclonal Antibody
Reactive Species	Human
Description	Boster Bio Anti-Human IgG2 Rabbit Monoclonal Antibody catalog # M07865-1. Tested in WB, IHC, ICC/IF applications. This antibody reacts with Human.
Application	IF, IHC, ICC, WB
Clonality	Monoclonal 19170
Formulation	Rabbit IgG in phosphate buffered saline, pH 7.4, 150mM NaCl, 0.02% sodium azide and 50% glycerol, 0.4-0.5mg/ml BSA.
Storage Instructions	Store at -20°C for one year. For short term storage and frequent use, store at 4°C for up to one month. Avoid repeated freeze-thaw cycles.
Host	Rabbit
Uniprot ID	P01859

Technical Details

Immunogen	A synthesized peptide derived from human IgG2
Isotype	IgG
Form	Liquid
Concentration	Actual concentration vary by lot. Use suggested dilution ratio to decide dilution procedure.
Purification	Affinity-chromatography
Suggested Dilutions	<p>Dilute the sample so that the expected range of concentrations fall within the detection range of this kit.</p> <p>If the expected range of concentration is unknown, a pilot test should be conducted to decide the optimal dilution ratio for your samples.</p> <p>Some PubMed article(s) citing the expression level of this target are as follows:</p> <p>Boster Bio's internal QC testing used:</p> <p>WB 1:1000-1:5000 IHC 1:100-1:500 ICC/IF 1:50-1:200</p>

Anti-Human IgG2 Rabbit Monoclonal Antibody (M07865-1) Images



Western blot analysis of human IgG2 expression in Human spleen lysate.

Submit a product review to Biocompare.com

Submit a review of this product to Biocompare.com to receive a \$20 Amazon.com giftcard! Your reviews help your fellow scientists make the right decisions. Thank you for your contribution.



Anti-Human IgG2 Rabbit Monoclonal Antibody