

Anti-Granuphilin (SYTL4) Mouse Monoclonal Antibody [Clone ID: OTI2B3]

Catalog Number: M07875

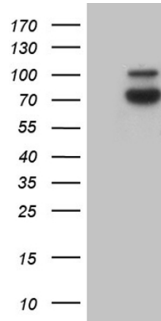
Overview

| | |
|----------------------|--|
| Product Name | Anti-Granuphilin (SYTL4) Mouse Monoclonal Antibody [Clone ID: OTI2B3] |
| Reactive Species | Human, Mouse, Rat |
| Description | Boster Bio SYTL4 mouse monoclonal antibody, clone OTI2B3. Catalog# M07875. Tested in IHC, WB. This antibody reacts with Human, Mouse, Rat. |
| Application | IHC, WB |
| Clonality | Monoclonal OTI2B3 |
| Formulation | PBS (pH 7.3) containing 1% stabilizing protein, 50% glycerol and 0.02% sodium azide. This antibody is supplied in a stabilized formulation. Compatibility with conjugation reactions depends on the chemistry of the conjugation method used. For conjugation methods that are not compatible with the stabilizing components present in this formulation, a carrier-free antibody format is required. |
| Storage Instructions | Store at -20°C as received. |
| Host | Mouse |
| Uniprot ID | Q96C24 |

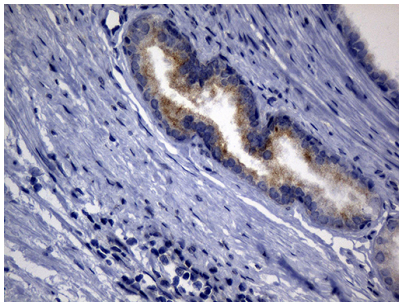
Technical Details

| | |
|---------------------|---|
| Immunogen | Full length human recombinant protein of human SYTL4 (NP_542775) produced in E.coli. |
| Isotype | IgG2a |
| Concentration | 1 mg/ml |
| Purification | Purified from mouse ascites fluids or tissue culture supernatant by affinity chromatography (protein A/G) |
| Suggested Dilutions | WB: 1:2000 IHC: 1:500 |

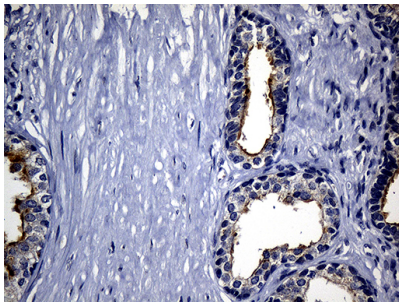
Anti-Granuphilin (SYTL4) Mouse Monoclonal Antibody [Clone ID: OTI2B3] (M07875) Images



HEK293T cells were transfected with the pCMV6-ENTRY control (Left lane) or pCMV6-ENTRY SYTL4 (Right lane) cDNA for 48 hrs and lysed. Equivalent amounts of cell lysates (5 ug per lane) were separated by SDS-PAGE and immunoblotted with anti-SYTL4 (1:2000).



Immunohistochemical staining of paraffin-embedded Human prostate tissue within the normal limits using anti-SYTL4 mouse monoclonal antibody. (Heat-induced epitope retrieval by 1mM EDTA in 10mM Tris buffer (pH8.5) at 120°C for 3min)



Immunohistochemical staining of paraffin-embedded Carcinoma of Human prostate tissue using anti-SYTL4 mouse monoclonal antibody. (Heat-induced epitope retrieval by 1mM EDTA in 10mM Tris buffer (pH8.5) at 120°C for 3min)

Submit a product review to Biocompare.com

Submit a review of this product to Biocompare.com to receive a \$20 Amazon.com giftcard! Your reviews help your fellow scientists make the right decisions. Thank you for your contribution.



Anti-Granuphilin (SYTL4) Mouse Monoclonal Antibody [Clone ID: OTI2B3]

For Research Use Only. Not for use in diagnostic procedures.