

## Anti-HEXO (ERI1) Mouse Monoclonal Antibody [Clone ID: OTI1B3]

Catalog Number: M07945

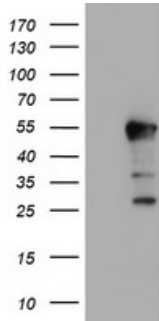
### Overview

Product Name	Anti-HEXO (ERI1) Mouse Monoclonal Antibody [Clone ID: OTI1B3]
Reactive Species	Human, Monkey, Rat
Description	Boster Bio ERI1 mouse monoclonal antibody, clone OTI1B3 (formerly 1B3). Catalog# M07945. Tested in IHC, WB. This antibody reacts with Human, Monkey, Rat.
Application	IHC, WB
Clonality	Monoclonal OTI1B3
Formulation	PBS (pH 7.3) containing 1% stabilizing protein, 50% glycerol and 0.02% sodium azide. This antibody is supplied in a stabilized formulation. Compatibility with conjugation reactions depends on the chemistry of the conjugation method used. For conjugation methods that are not compatible with the stabilizing components present in this formulation, a carrier-free antibody format is required.
Storage Instructions	Store at -20°C as received.
Host	Mouse
Uniprot ID	Q8IV48

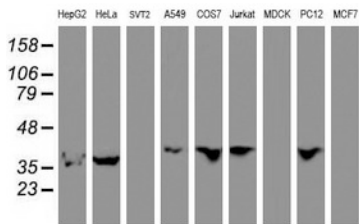
### Technical Details

Immunogen	Full length human recombinant protein of human ERI1 (NP_699163) produced in HEK293T cell.
Isotype	IgG2b
Concentration	1.1 mg/ml
Purification	Purified from mouse ascites fluids or tissue culture supernatant by affinity chromatography (protein A/G)
Suggested Dilutions	WB: 1:500~2000 IHC: 1:150

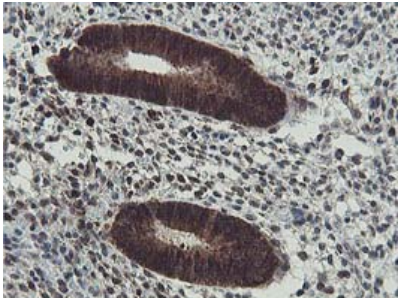
## Anti-HEXO (ERI1) Mouse Monoclonal Antibody [Clone ID: OTI1B3] (M07945) Images



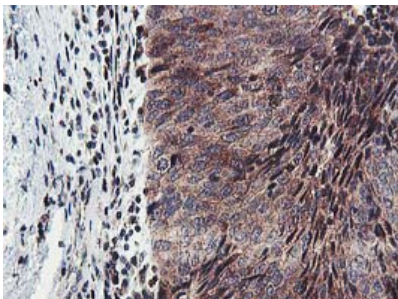
HEK293T cells were transfected with the pCMV6-ENTRY control (Left lane) or pCMV6-ENTRY ERI1 (Right lane) cDNA for 48 hrs and lysed. Equivalent amounts of cell lysates (5 ug per lane) were separated by SDS-PAGE and immunoblotted with anti-ERI1.



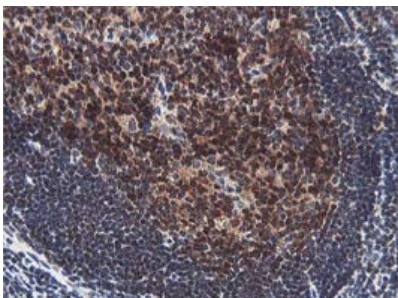
Western blot analysis of extracts (35ug) from 9 different cell lines by using anti-ERI1 monoclonal antibody.



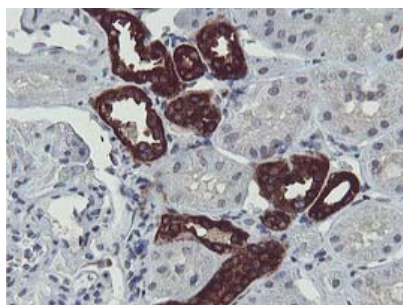
Immunohistochemical staining of paraffin-embedded Human endometrium tissue within the normal limits using anti-ERI1 mouse monoclonal antibody. (Heat-induced epitope retrieval by 10mM citric buffer)



Immunohistochemical staining of paraffin-embedded Carcinoma of Human bladder tissue using anti-ERI1 mouse monoclonal antibody. (Heat-induced epitope retrieval by 10mM citric buffer)



Immunohistochemical staining of paraffin-embedded Human tonsil within the normal limits using anti-ERI1 mouse monoclonal antibody. (Heat-induced epitope retrieval by 10mM citric buffer)



Immunohistochemical staining of paraffin-embedded Human Kidney tissue within the normal limits using anti-ERI1 mouse monoclonal antibody. (Heat-induced epitope retrieval by 10mM citric buffer)

## Submit a product review to [Biocompare.com](https://www.biocompare.com)

Submit a review of this product to [Biocompare.com](https://www.biocompare.com) to receive a \$20 Amazon.com giftcard! Your reviews help your fellow scientists make the right decisions. Thank you for your contribution.



Anti-HEXO (ERI1) Mouse Monoclonal Antibody [Clone ID: OT11B3]

For Research Use Only. Not for use in diagnostic procedures.